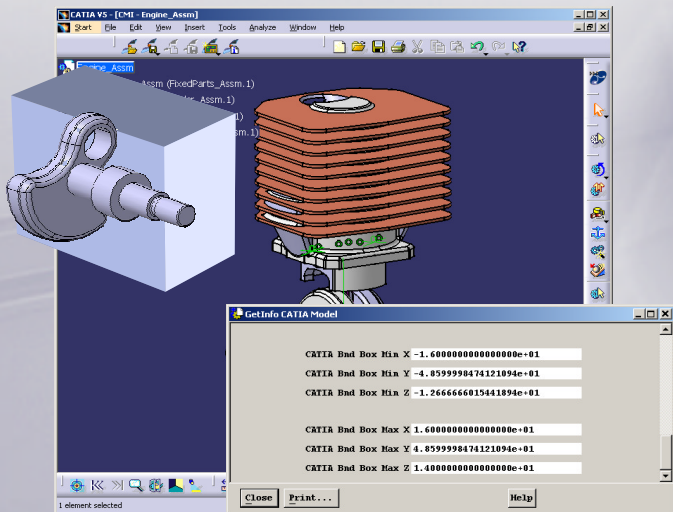
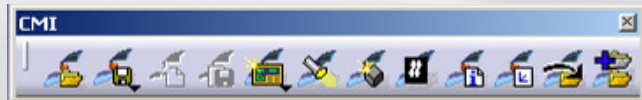
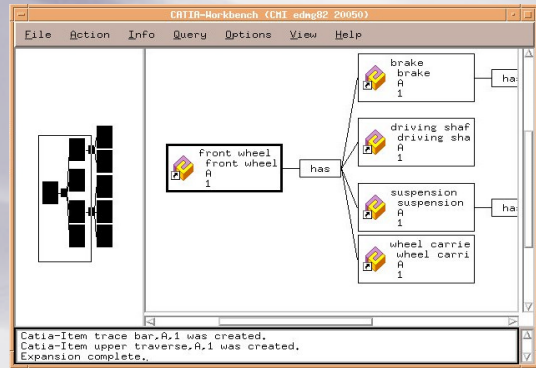


CMI User Day – Live Demo



CMI Live Demo. Schedule.

Demo Scenarios 1/2

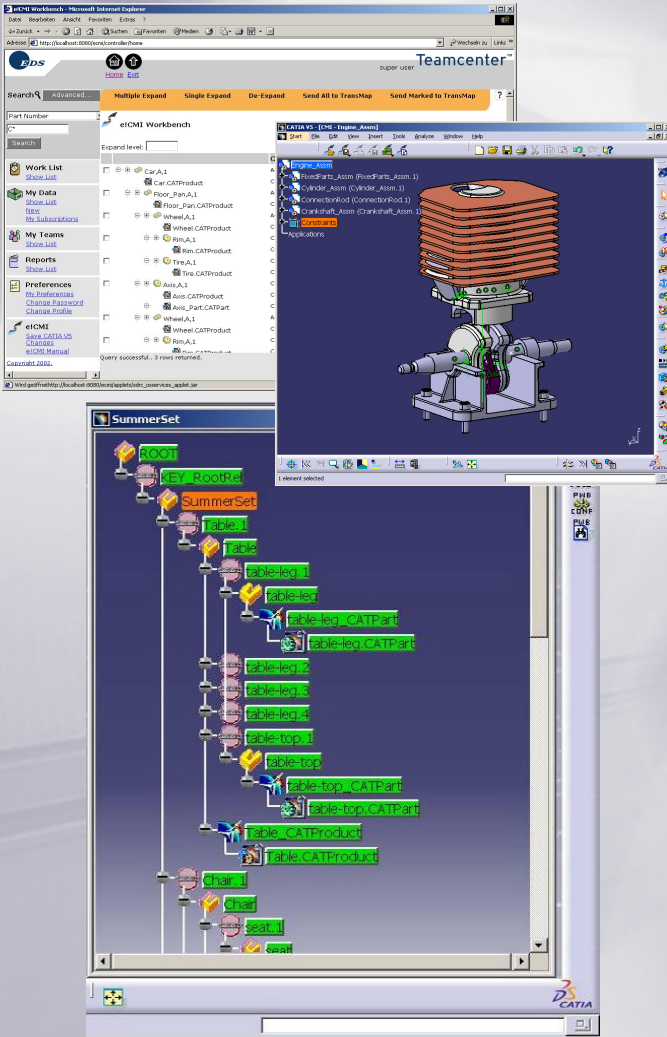


- classic CMI with CATIA V5
 - Teamcenter – CATIA V5 data exchange
 - bi-directional communication
 - Update of positions and files
 - Single CATIA V5 Window mode
 - “Add Temp” functionality
 - Product structure creation & modification
 - In PDM
 - In CATIA V5 – Synchronize
 - Multi-quantity support (Movie)
 - DMU functionality
 - Bounding Box creation and DMU file
 - Neighborhood and volume based search
 - CATIA V5 caching support – CGR file handling

CMI Live Demo. Schedule.

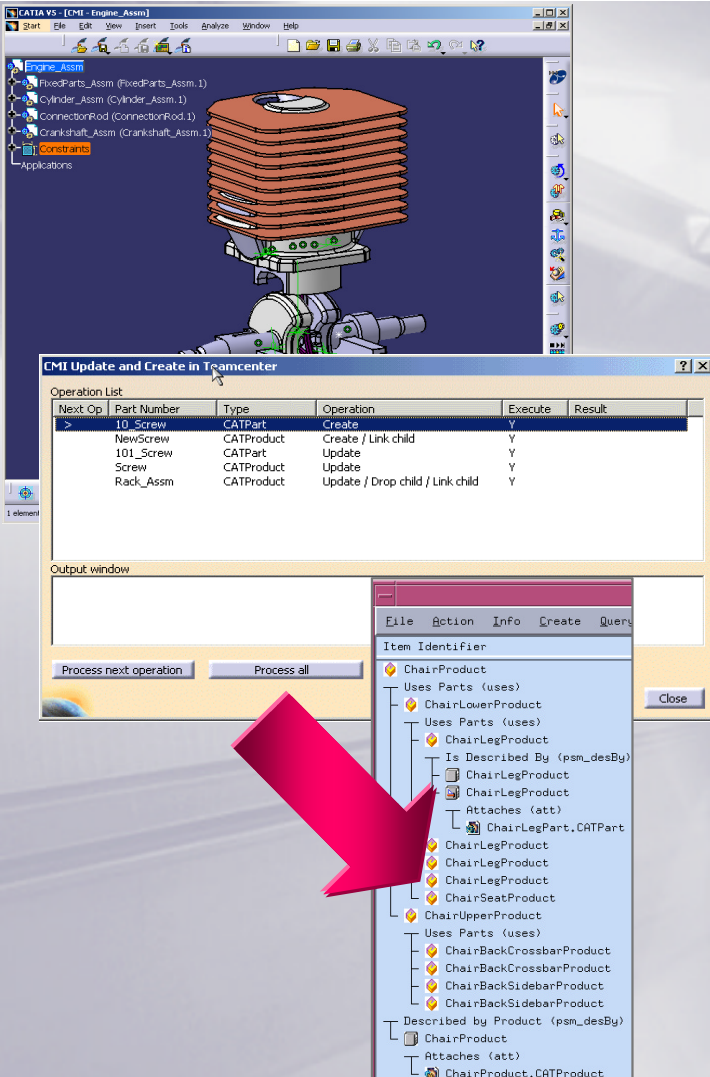
Demo Scenarios 2/2

- e!CMI – CMI Teamcenter Thin Client – CATIA V5 integration
 - Integration Concept
 - Update of positions and files
 - Product structure creation / modification from CATIA V5
- s!CMI – CMI partner integration (Movie)
- PDM Workbench
 - Log In
 - Choose a configuration
 - Load structures in different configurations
 - Modify CATIA V5 properties



CMI Live Demo.

Product structure creation & modification.



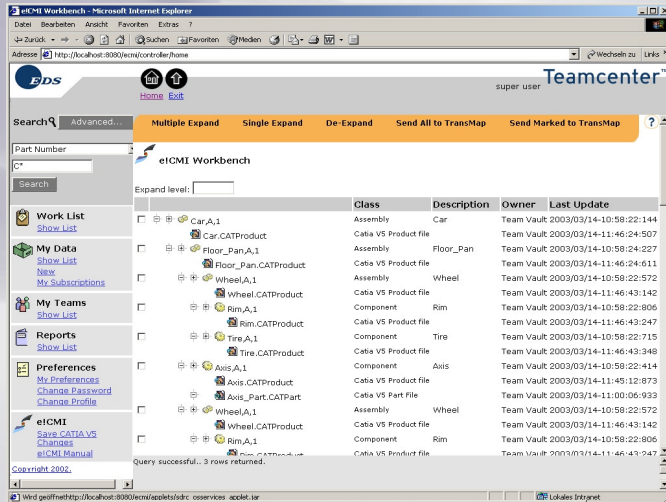
Scenario

- The designer creates from scratch a CATIA V5 assembly and wants to register it as a Teamcenter Enterprise product structure

Demo

- Loading CATIA V5 native assembly with File Open ...
- Use CMI Synchronize to export all to Teamcenter Enterprise
- Expand and modify product structure in Teamcenter Enterprise
- Transfer to CATIA V5

Live Demo. e!CMI.

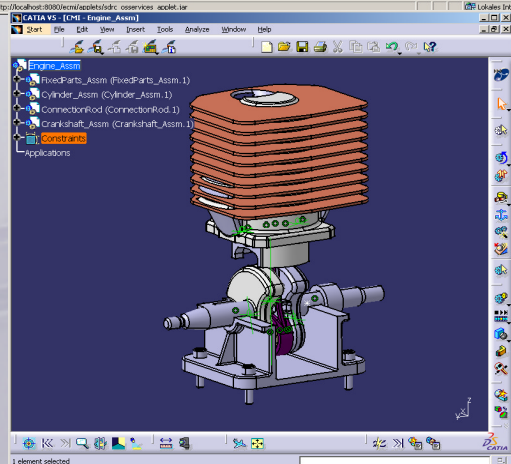


Scenario

- One Supplier and one OEM that are working together on one Assembly
- OEM is using Teamcenter Classic Client with CMI
- Supplier is accessing PDM data with standard MS Internet Explorer (TC Thin Client Technology)
- Both are using CATIA V5

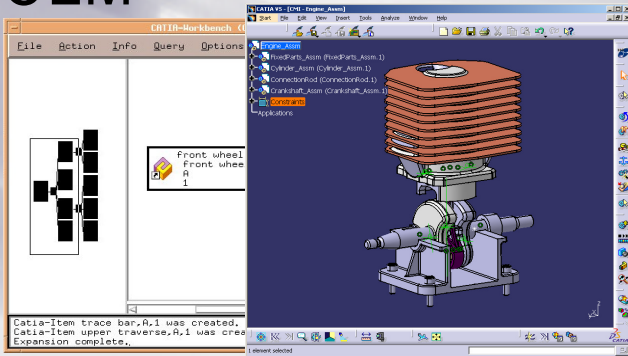
Demo

- Loading Dredger Assembly via e!CMI to CATIA
- Modifying a part in CATIA V5
- Updating to Teamcenter with e!CMI
- Loading a Top Level Assembly into CATIA V5
- Create a new



Live Demo. s!CMI.

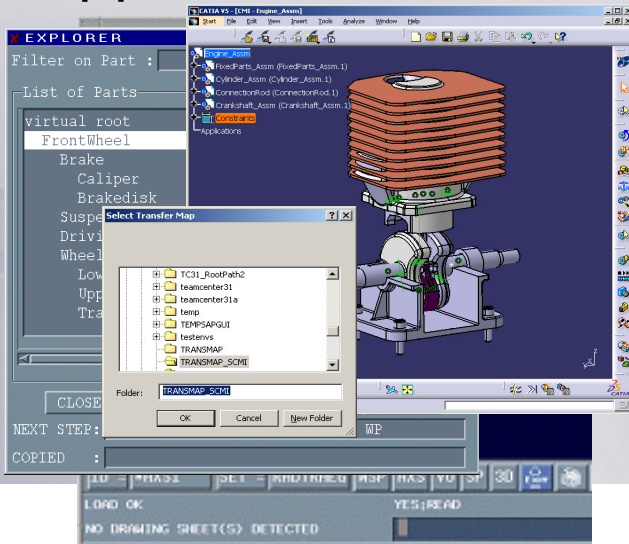
OEM



Scenario

- One Supplier and one OEM that are working together on one Assembly
- OEM is using Teamcenter Classic Client with CMI
- Supplier cannot access PDM database (is working with s!CMI)
- Both are using CATIA V5

Supplier



Demo

- Exporting CMI CATIA V5 product structure as s!CMI supplier session.
- Loading CATIA V5 product structure via s!CMI to CATIA V5
- Modification in CATIA V5 and storing results back
- Synchronization at OEM site

Live Demo.

PDM-Workbench (PWB).

Demo

- Login
- Load structures in different configurations
- Contextual menu of PWB-tree
- Modification of structure
- From within PWB-tree
- From within CATIA-product structure
- Modification of attributes
- Load modified structure again in a new PWB-session

