

# CATIA Metaphase Integration

## History, present and future of CMI



Dr. Thomas Wendel, BC EPDM/D

April 2003



# History, present and future of CMI

## Who we are



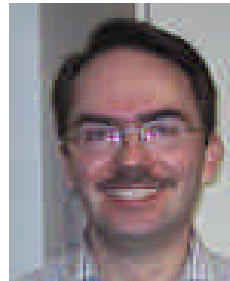
**Thomas R. Salva**

T-Systems Inc.  
Vice President - Manufacturing Industry  
+1-248-370-8729  
tsalva@t-systemsus.com



**Patrick Aretz**

T-Systems International GmbH  
Technical Product Manager  
CMI Product Development  
+49-711-972-49 922  
Patrick.Aretz@t-systems.com



**Tino Schlitt**

T-Systems International GmbH  
Product Manager  
CMI Product Development  
+49-711-972-40 304  
Tino.Schlitt@t-systems.com



**Dr. Thomas Wendel**

T-Systems International GmbH  
Senior Unit Manager BC EPDM/D  
+49-711-972-49 645  
Thomas.Wendel@t-systems.com



**Frank Luppold**

T-Systems International GmbH  
Director International Sales  
SL SI 1 – BE International  
+49-711-972-42 850  
Frank.Luppold@t-systems.com

# History, present and future of CMI

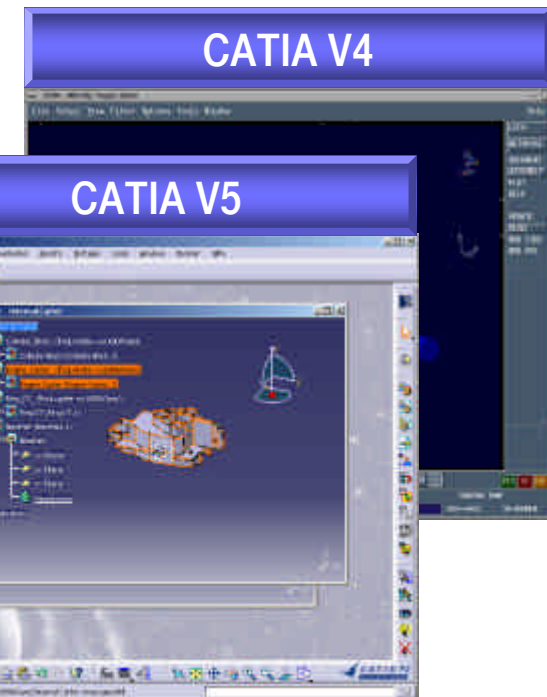
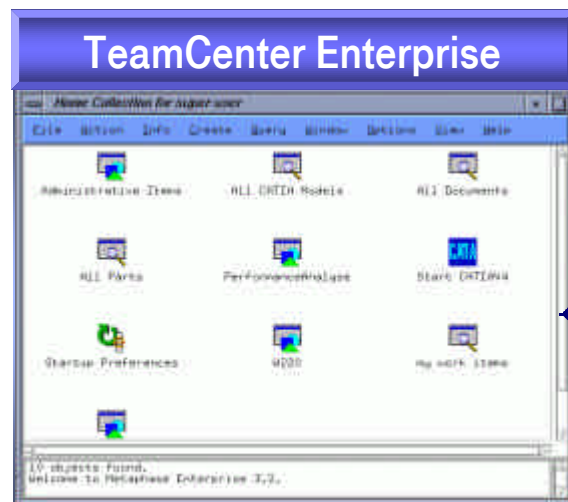
## Contents

- CMI-Overview
- History
- Present
- Customers
- Reference Projects
- Future / Strategy

# History, present and future of CMI

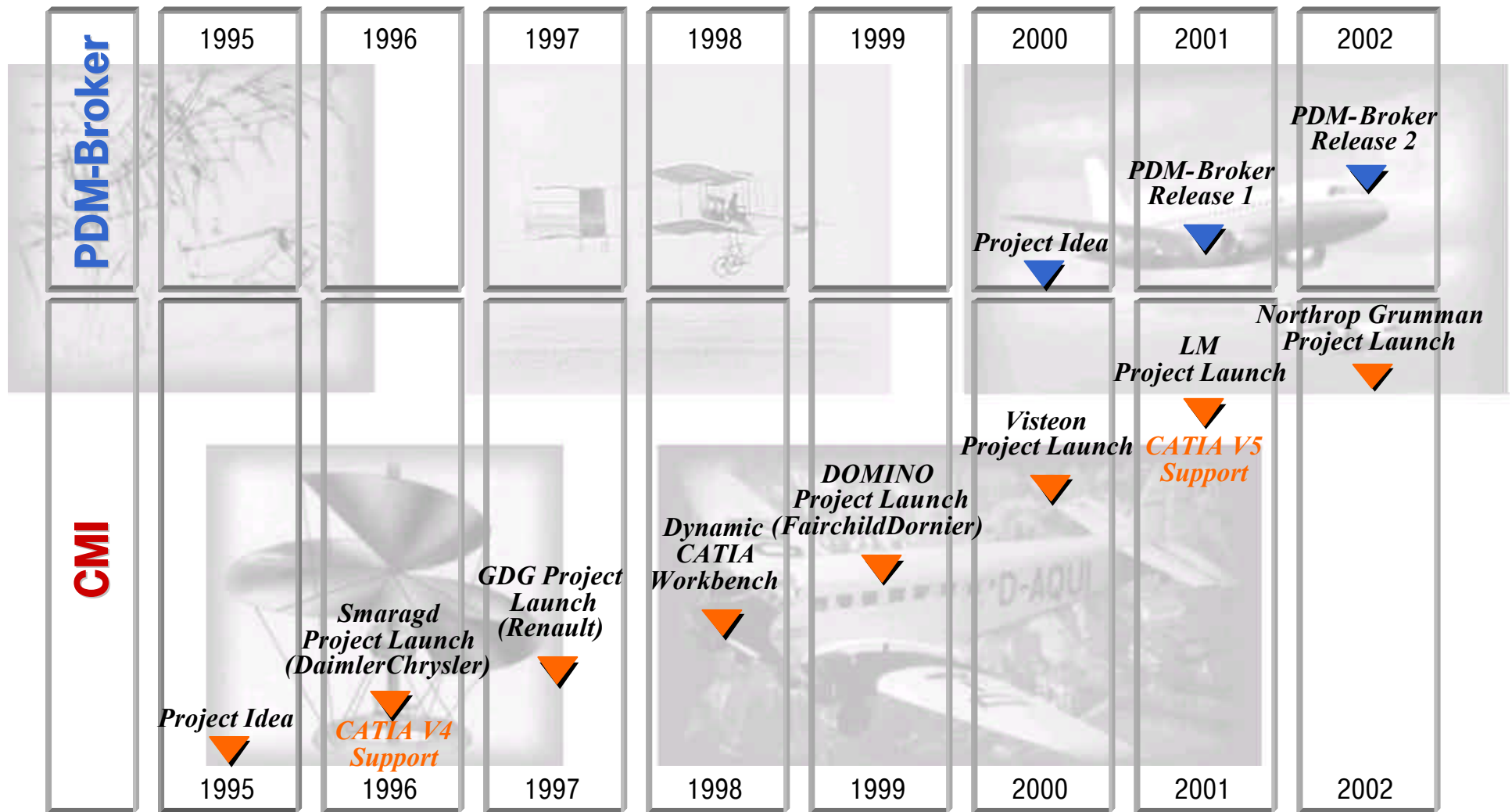
## CATIA Metaphase Interface - Overview

- Integration of CATIA V4 / V5 and TeamCenter Enterprise
- TeamCenter Enterprise as global PDM system
- Product since 1995
- Assembly functionality in CATIA V4
- Integration of bill of material and geometry data
- Wide range of customization possibilities
- [www.cmi-support.com](http://www.cmi-support.com)



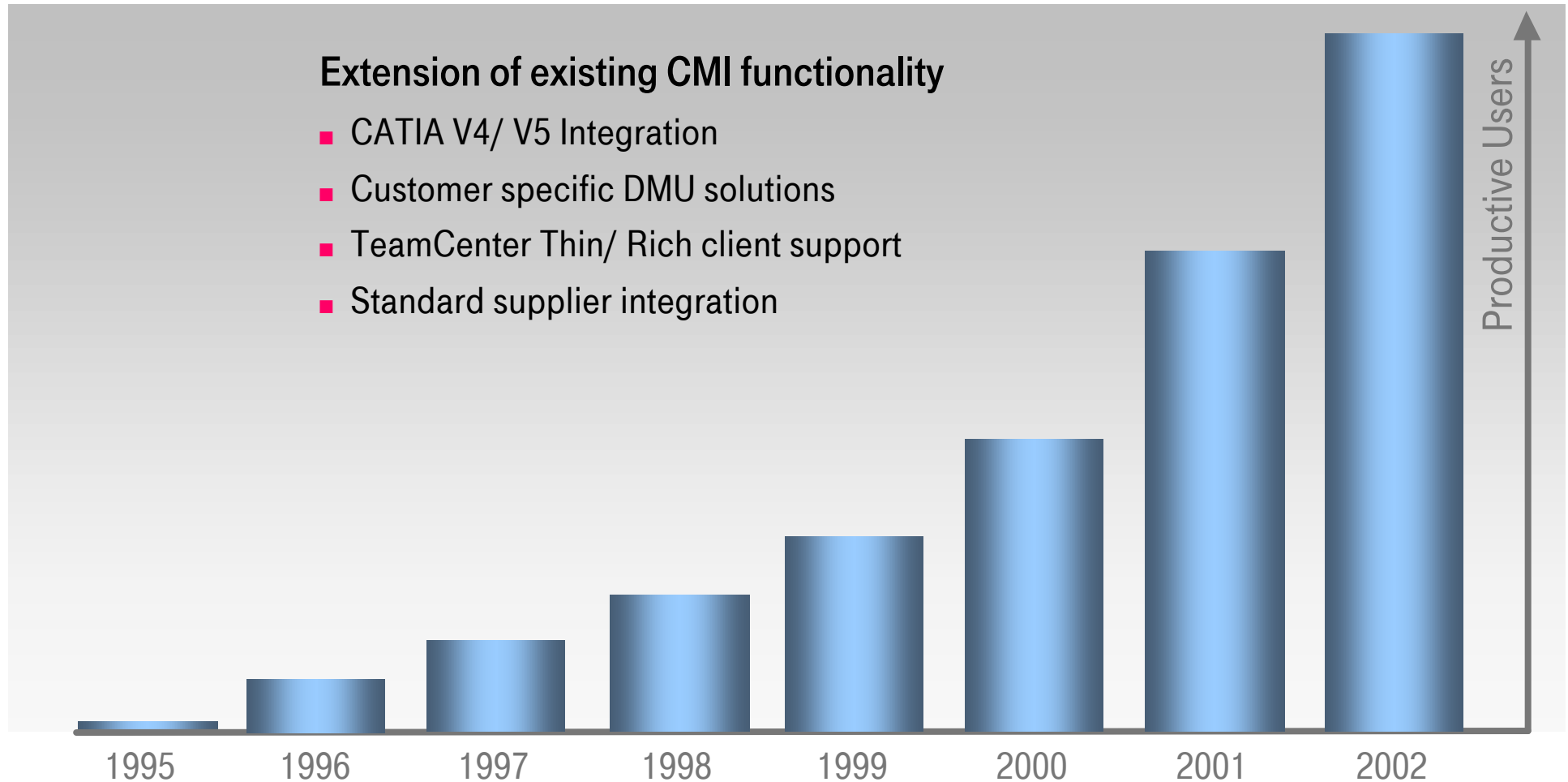
# History, present and future of CMI

## Our history



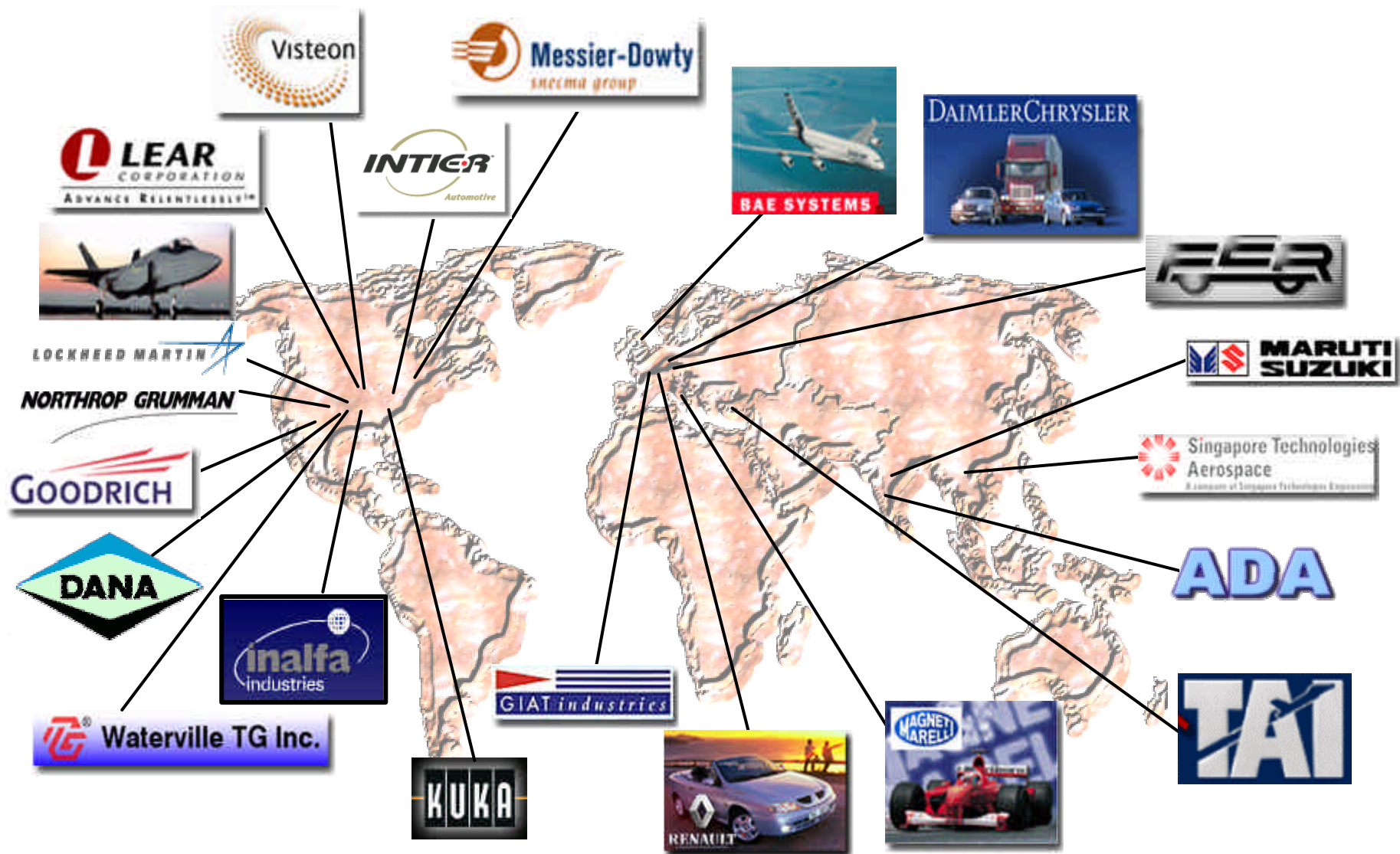
# History, present and future of CMI

## Present activities



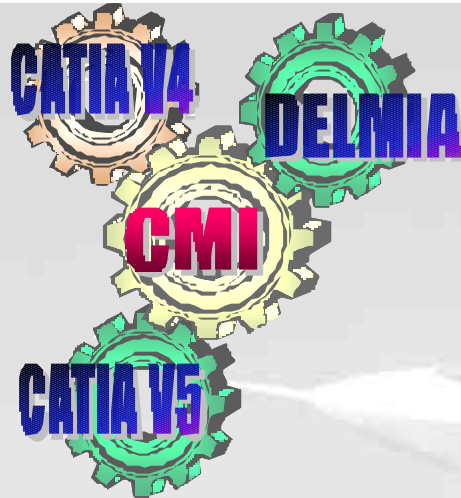
# History, present and future of CMI

## Customer extract.



# History, present and future of CMI

Reference project CMI @ **LOCKHEED MARTIN**



## Services for Lockheed Martin:

- Integration of CATIA V4, CATIA V5, Delmia ENVISION Assembly and Metaphase
- CMI standard product customization
- Various levels of consulting and support (onsite consulting/ coaching/ specification/ implemen-tation/ training development/ roll-out& UHD)

## Locations:

- US (Development)
- US, Netherlands, UK, Italy (Production)
- worldwide partner/supplier integration

## PDM Project

- JSF (Joint Strike Fighter) project
- about 3,000 CAD / 9,000 PDM seats
- 380 floating CMI licenses (1st step)
- More than 740 CMI licenses in the JSF consortium
- 1,200 users planned for Lockheed

## Applications:

- CATIA V4
- CATIA V5
- Teamcenter Enterprise

“After a rigorous evaluation process, we selected T-Systems’ CATIA Metaphase Interface software product as the initial tool for interfacing CATIA with our Metaphase Product Data Management System for our Joint Strike Fighter Program. CMI offers us an initial lower risk and more supportable, simpler architecture for the Joint Strike Fighter program as it brings new team members and suppliers on board.”  
(Mark Peden, Vice President of Information Systems and Technology)



# History, present and future of CMI

## Reference project CMI @ DaimlerChrysler

*Smaragd*



### Services for DaimlerChrysler:

- Delivery of CMI CATIA V4 / CATIA V5
- CMI standard product customization
- Onsite Support, Consulting, User training
- Integration to 4D-Navigator

### Locations:

- Stuttgart, Germany (Development)
- Germany, US, Brazil and Spain (Production)

### PDM Project

- Name of the project : Smaragd
- 2100 CATIA V4 seats
- 200 CATIA V5 seats planned for 2003
- About 6000 PDM/Smaragd users
- Company wide license (All CAD Users)

### Applications:

- CATIA V4 / V5, 4D Navigator
- METAPHASE

# History, present and future of CMI

## CMI @ Renault



**Créateur**  
**d'Automobiles**



### Services for Renault:

- CMI standard product customization
- Onsite Support, Key User training
- Performance project
- Integration to melting point software LINX
- Integration to 4D-Navigator

### ■ Locations:

- Paris, France (development)
- France, Spain, ... (production)

### ■ PDM Project

- Name of the project : GDG
- over 1000 CAD seats
- over 2500 PDM seats
- 600 floating CMI licenses (1.800 users)

### ■ Applications:

- CATIA, LINX
- METAPHASE
- 4D NAV

# History, present and future of CMI

Our strategy.

## CMI Family

- Support of CATIA product line (V4/V5, DMU Nav.)
- Support of Teamcenter Suite
- Customer specific integrations around standard CMI

## Partnerships

- EDS
- Dassault
- SmarTeam

