

T-Systems

The Convergence Company

Event:

Date:

Location:

Presenter:

====!"§==Systems=

T-Systems A New Company Emerges

21,000
Employees

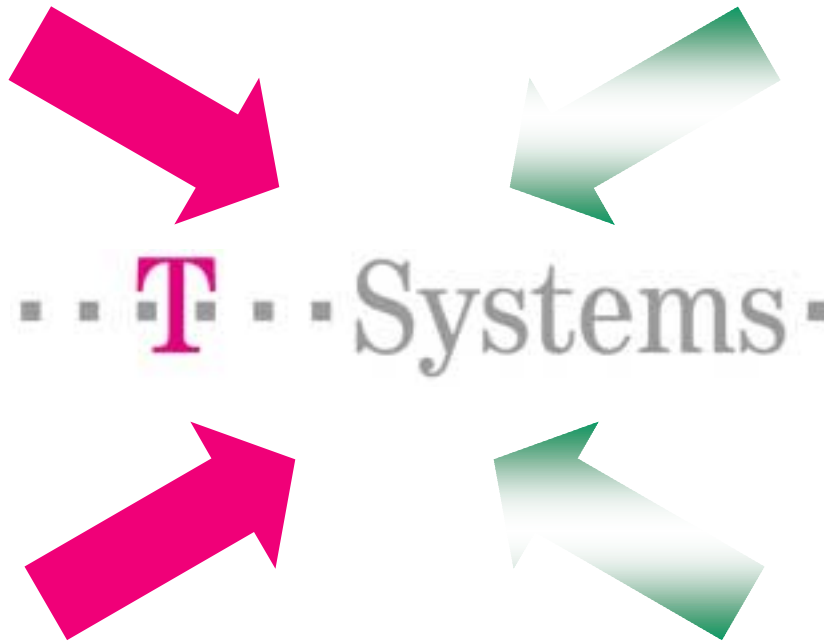


Located in
11 Countries

20,000
Employees

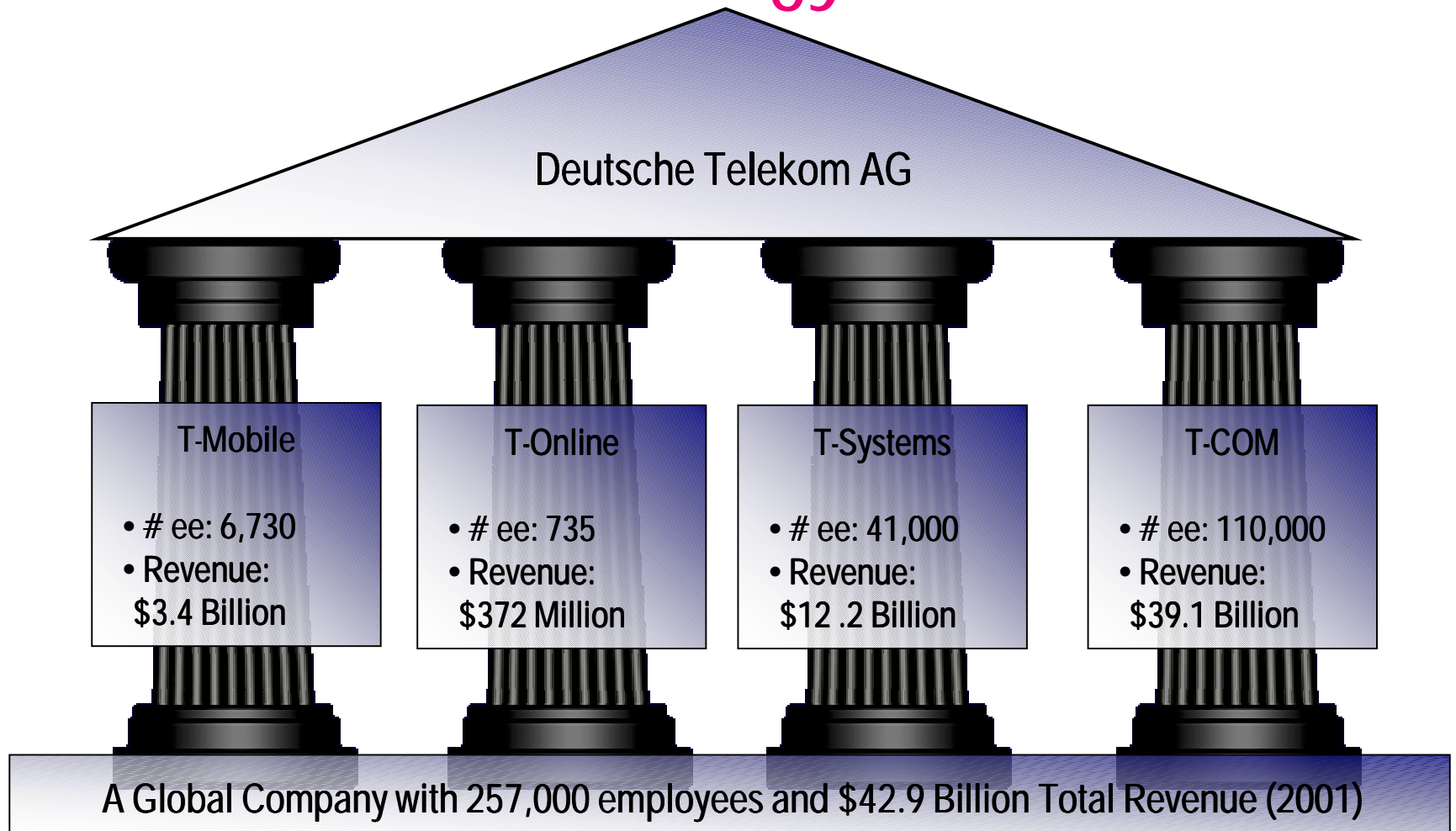


Located in
23 Countries



====!"§==Systems=

Deutsche Telekom's Four Division Strategy



T-Systems North America Snapshot



JOHN DEERE

UNITED AIRLINES



A DaimlerChrysler Company

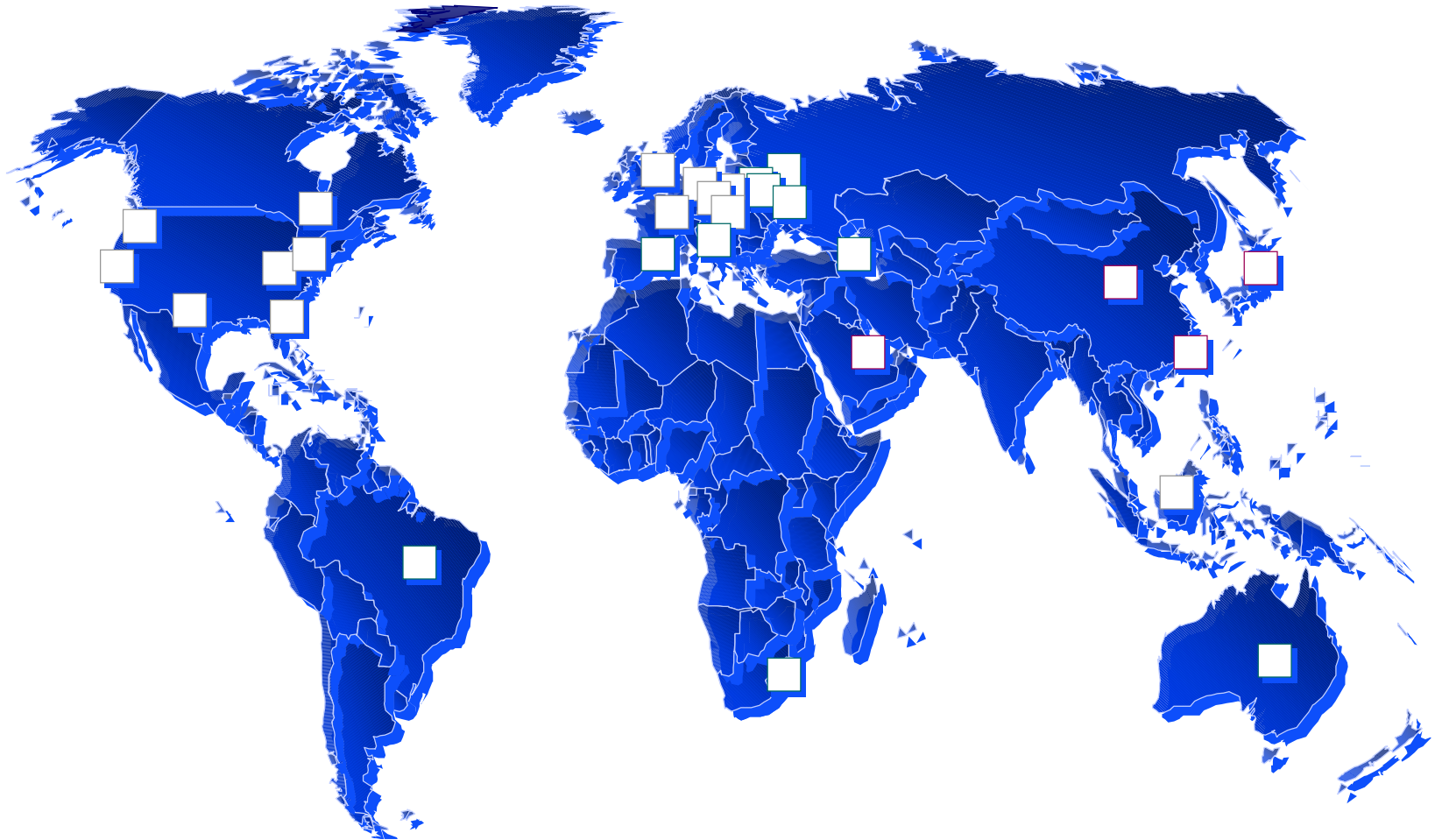


An EDISON INTERNATIONAL Company



====!"§==Systems=

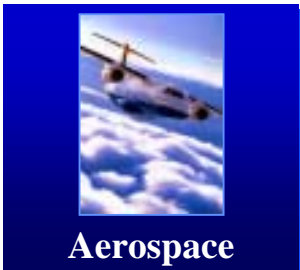
T-Systems Global Presence



T-Systems USA



Challenges



E-Business



Consulting

- Reduce product development time
- Reduce costs & improve ROI
- Rapid / high-quality support & improved productivity
- Infrastructure planning, utilization & mgmt best practices
- Collaborative engineering & information sharing
- EDM / PDM mgmt practices

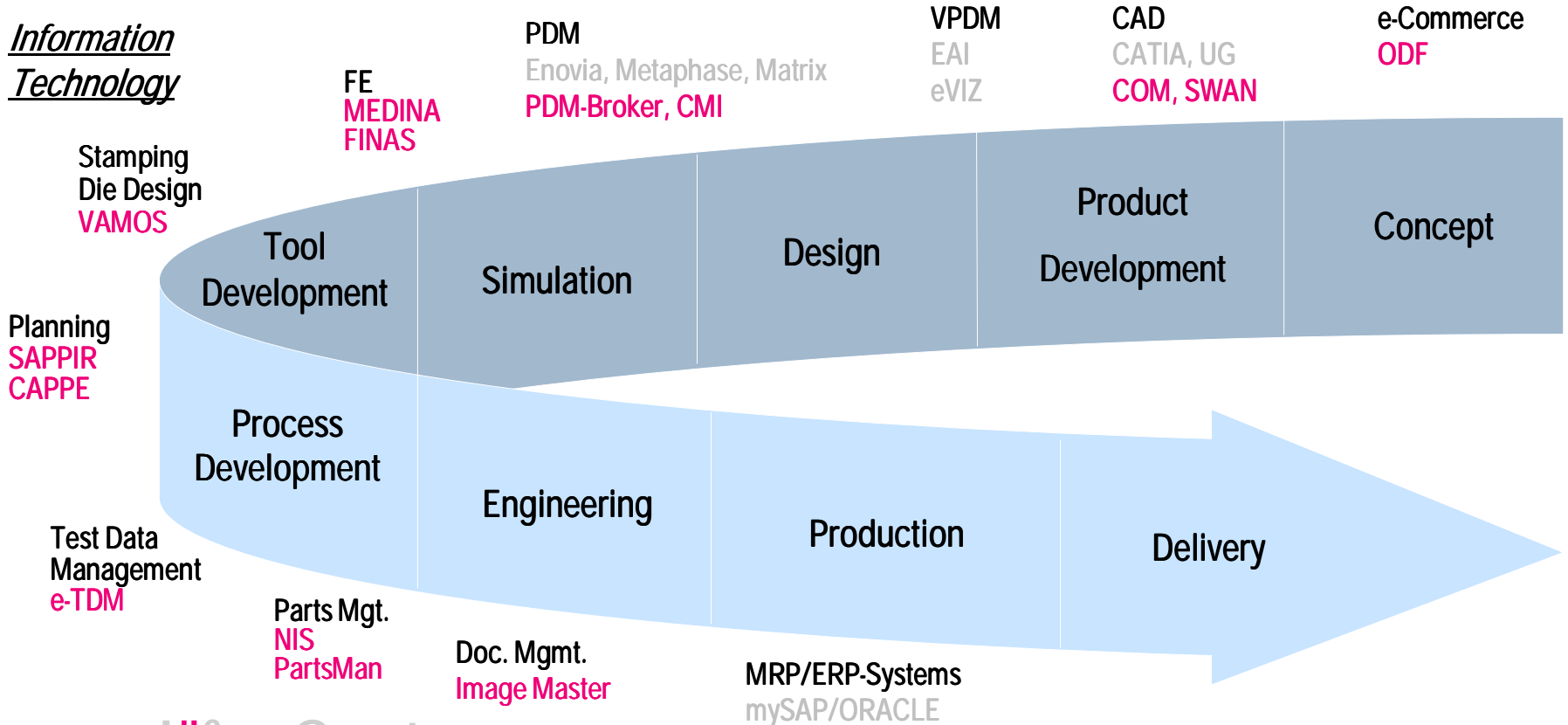
Engineering Solutions

Business Strategy

- Time to market
- Global product development
- Reduce engineering cycle time
- Optimize core processes
- Shorter manufacturing cycle time

- Digital Integration (web-enablement)
- Life Cycle Management
- Virtual Enterprise
- Supply Chain Management
- Knowledge Based Management

Information Technology



====!"§====Systems=

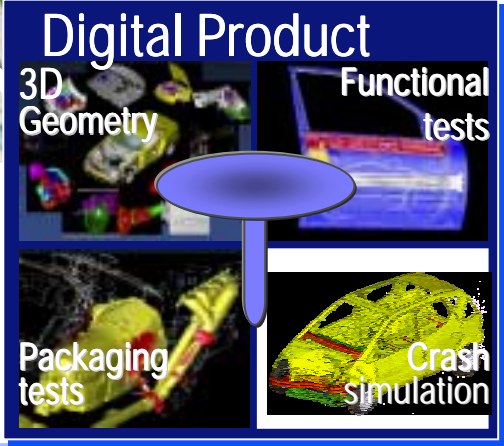
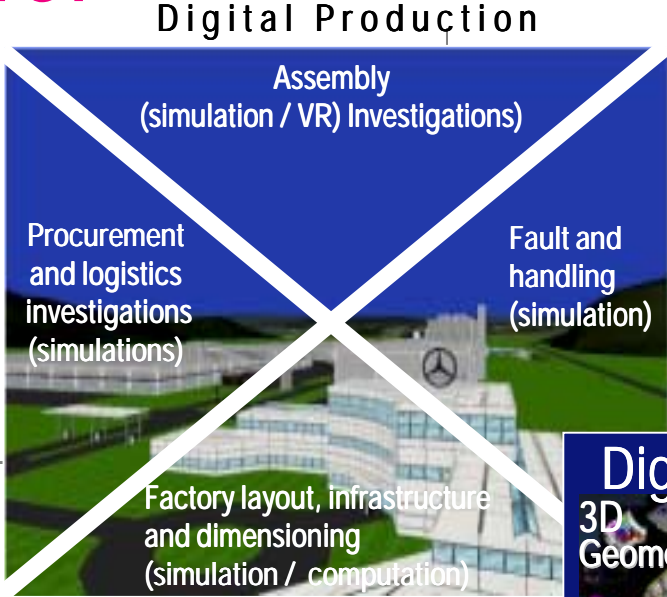
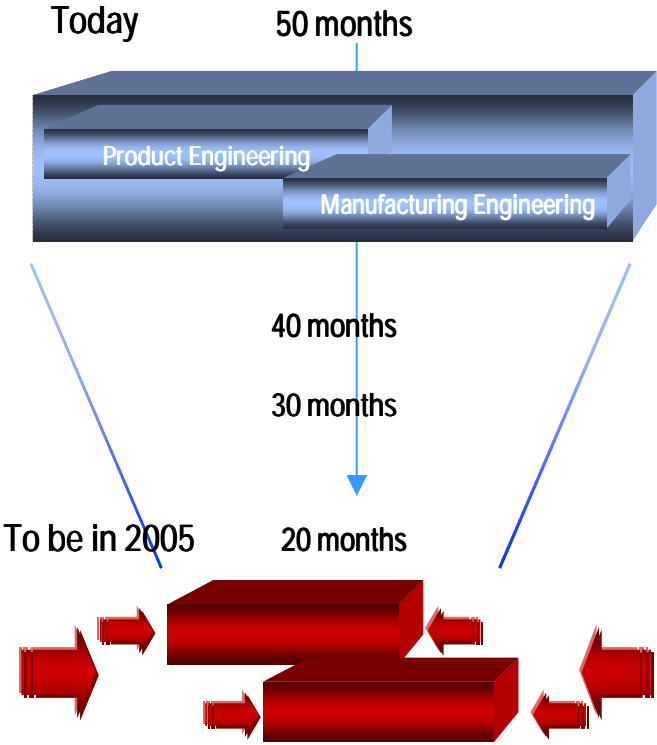
T-Systems US Manufacturing Customers



====!"§====Systems=

...and more than 40 others!

Open Digital Factory integrates OEM and Supplier



Open Digital Factory = (Digital Product + Digital Production) x Product Lifecycle

====!"§====Systems==

CATIA Support, Operation, UHD, Training & Data Exchange at Freightliner

Freightliner Benefits

- Cost control/fixed price
- Guaranteed Service Levels
- Flexibility to redeploy resources
- Manpower commitment
- Capitalize on debis CAD support experience of 2200 seats

Scope of Contract

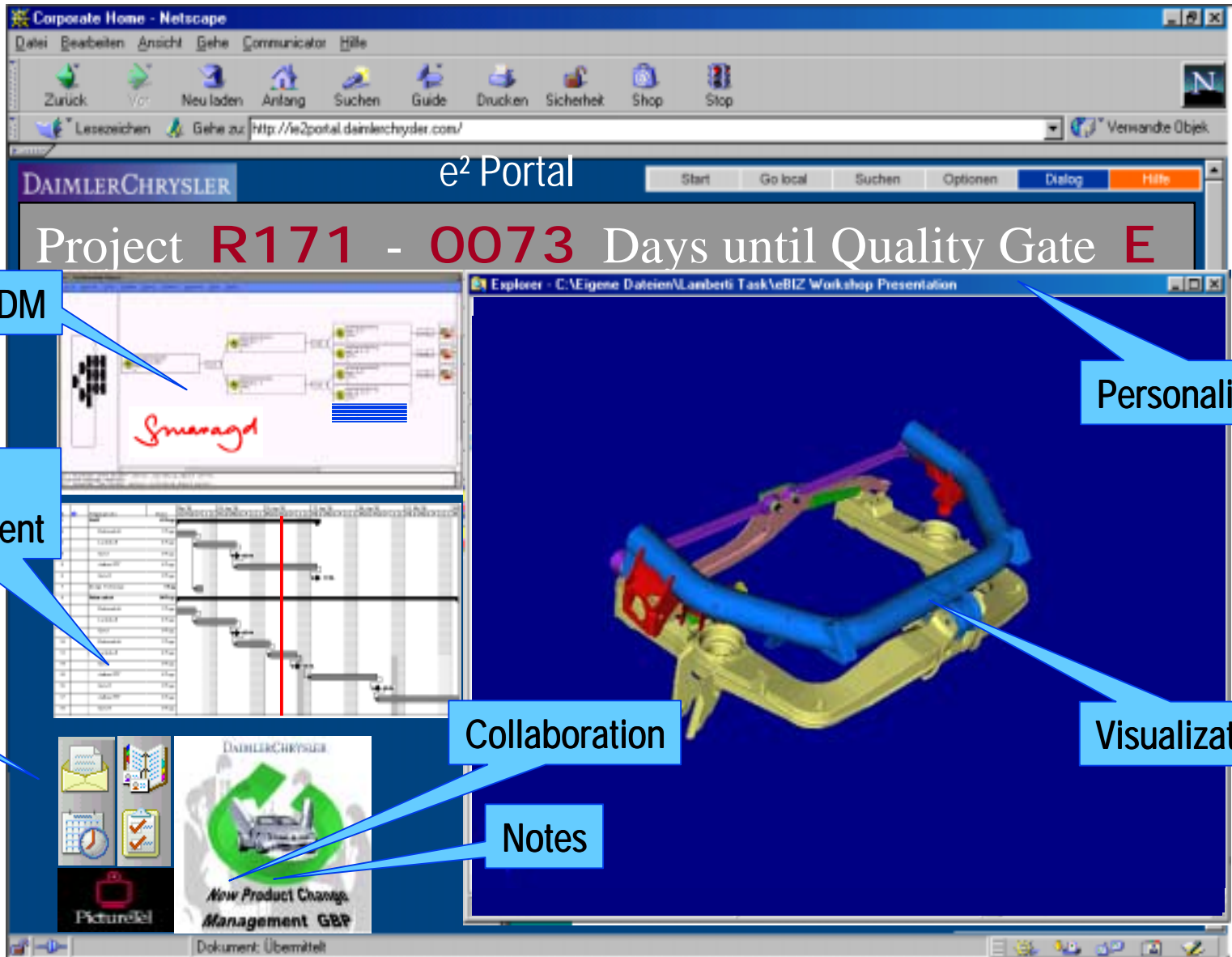
- 1000 users/500 workstations
- CATIA + 22 CAD applications
- UHD for 12 hours/day
- Training for all users
- Support for all locations
- Asset Management



FREIGHTLINER[®]
CORPORATION

CAD Application Support

e² - Portal Prototype for DC



PDM

Project Management

Team

Collaboration

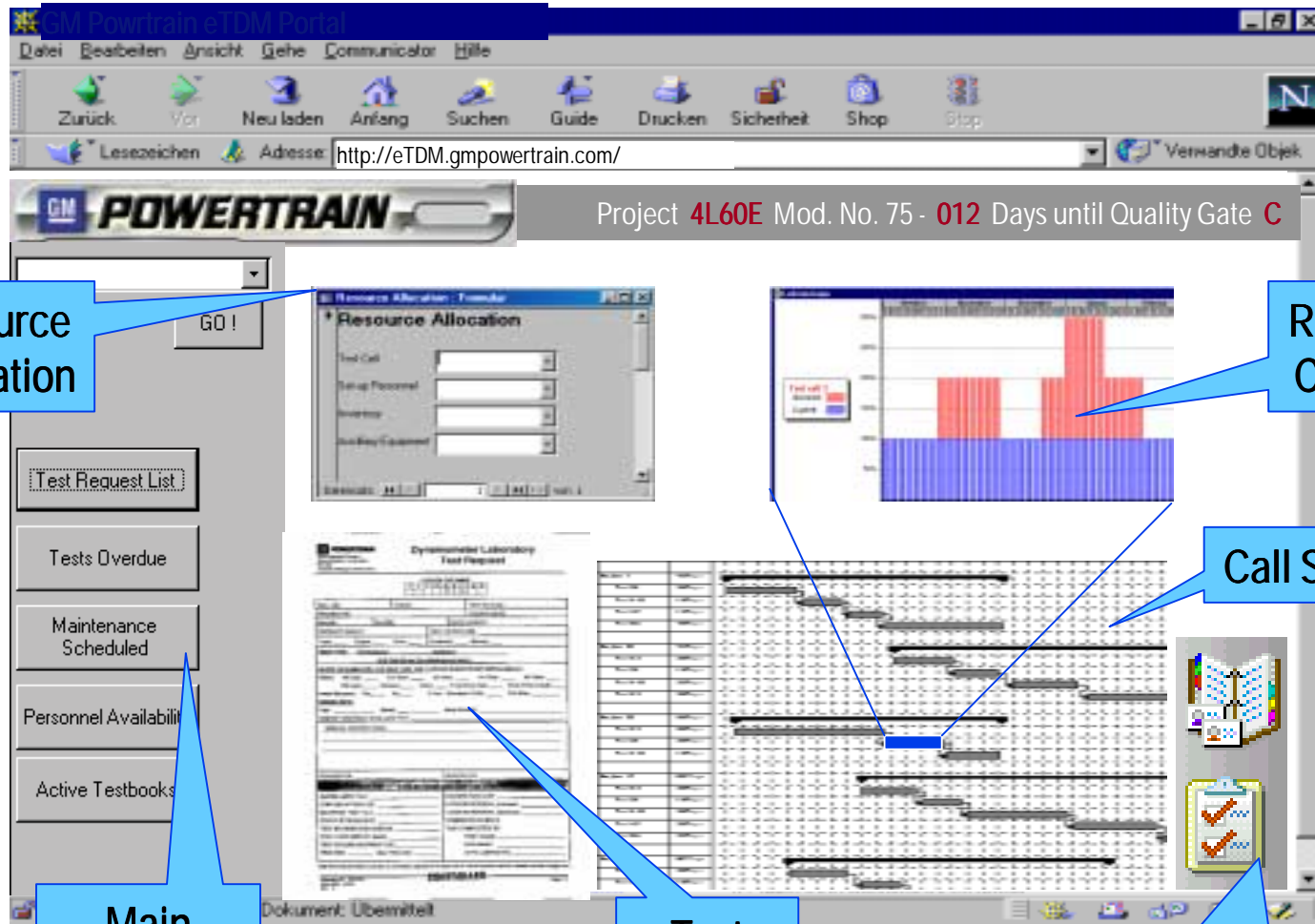
Notes

Personalization

Visualization

====! §====Systems====

GM Power Train eTDM Project



Resource Allocation

Resource Conflicts

Call Schedule

Main Navigation

Test Request

Team Collaboration

Engineering Applications Management at Fairchild/Dornier

- **Locations:**
Oberpfaffenhofen (development),
San Antonio, USA (production)
- **Number of workstations:**
130 workstations, 40 hosts
in development
- **Applications:**
CAD/CAE, DMU, PDM, SAP
 - CATIA, CADAM (CCD),
 - CATIA macros, utilities
 - debis-NIS, debis-SWAN,
debis-NORMMASTER, debis-
EXTRAN
 - Metaphase , CMI



Advantages for Fairchild/Dornier:

- One contact for implementation, integration and operation of all engineering applications
- Greatly reduced time to market for new aircraft
- Integration with PDM (product data management)
- Recognized IT service partner with large personnel capacity and international profile

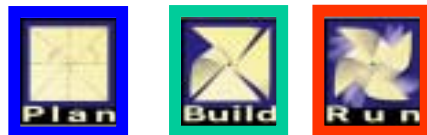
CAD PARTS Management NIS at Sikorsky Aircraft

Customizing and integration of 400 US aircraft construction standards as 3D solids, Sikorsky standards and multiple usage parts for product development and production.



Advantages for Sikorsky:

- **Number of workstations:**
200 CAD workstations
with debis-NIS PartsMan



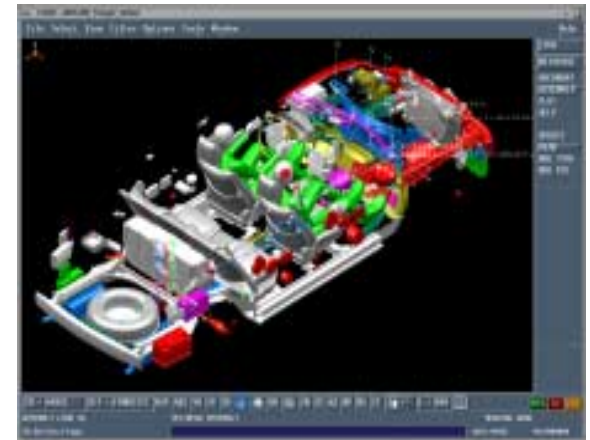
- Reduction in the number of different parts and significant cost reduction through efficient mapping and searches of all standard and multiple usage parts
- Cost reduction of 40% due to cross-functional use of families of standard parts
- Quality assurance with released families of standard parts

CMI at Renault

- GDG (large EDM project at Renault)
- Project realized in Paris
- Special assembly solution
- Integration of DMU tools

Services/Products:

- Implementation of 450 floating CMI Licenses
- Conception CMI enhancements
- Performance optimization
- Local end user support



====!"§==Systems=

CAX Process improvement in developing the new at DaimlerChrysler

- Process & Application Analysis of the "as is Situation" (weakpoints) in using CAD (Catia)
- Use of DMU methodologies
- Implementation of the new process



Advantages for DCS:

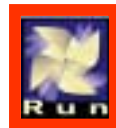
- Deploying functionalities of CATIA
- Cut development cycle time and costs by 40%



Engineering applications management at Micro Compact Car

Implementation of the MATRIX PDM system, engineering help desk, onsite support, operation of engineering workstations/servers, applications management for CAD, PDM and BCT, engineering service management.

- **Locations:**
Renningen, Biel/CH (development),
Hambach/F (production)
- **Number of seats:**
45 workstations (HP & IBM)
- **Applications:**
 - CATIA, SYRKO, CADD5
 - debis-NIS, debis-MEDINA
 - NASTRAN, mcc-BCT
 - Legato Networker
 - ALIAS, virtual workshop, Matrix



Advantages for MCC:

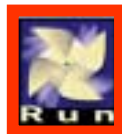
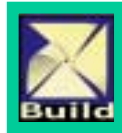
- Single source for implementation and operation management of complete system
- Full range of services for their heterogeneous IT infrastructure
- Short response time
- Increased cost and process transparency by implementing process-wide data management

CAE Analysis - MEDINA at DaimlerChrysler US

DC group wide implementation, integration, training and technical support provided by debis.

Number of seats:

- 70 workstations at Chrysler
- 12 workstations at Freightliner



Advantages for DaimlerChrysler:

- CAE integration platform for a wide range of different processes
- Interfacing with DC-specific CAE tools, customer-specific system add-ons
- Attractive price-performance ratio

CAD/CAM applications management for IVM Consultants

Service Levels INSTALL, STANDARD and COMPLETE.

Hotline support/on-call service, on-site support.

Training and workshops.

- **Locations:**

Germany and international

- **Number of seats:**

90 workstations (IBM, SUN & SGI)

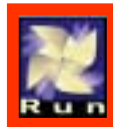
- **Applications:**

- CATIA, SYRKO, ProEngineer

- debis-MEDINA

- COM-STEP, COM-VDAFS

- CATIA-Macros, Utilities
(conversion, etc.)



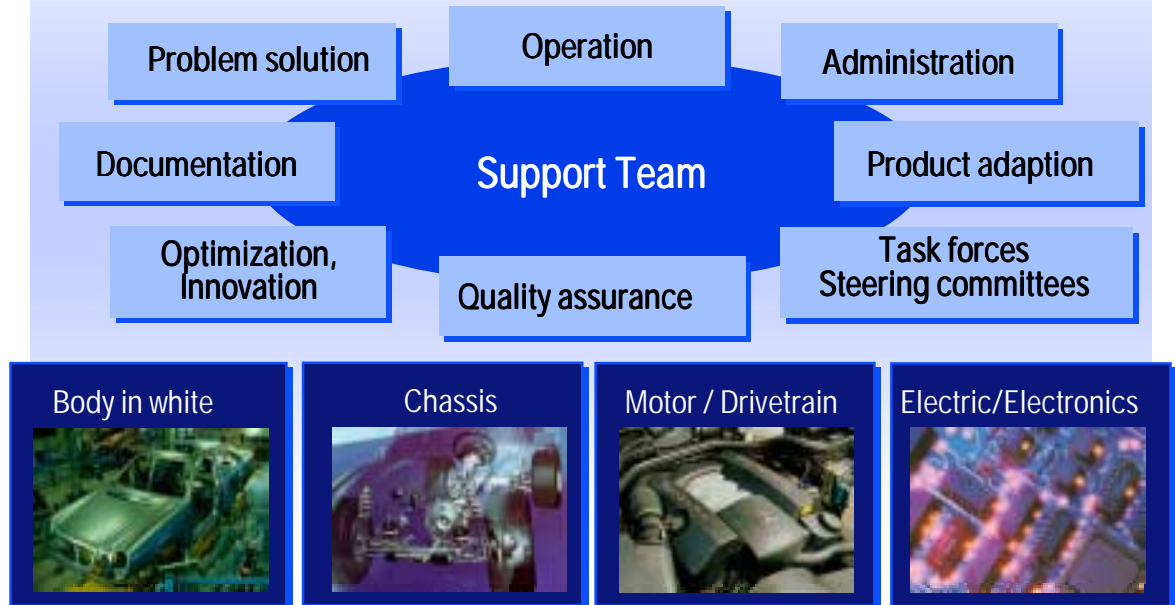
Advantages for IVM:

- One contact for implementation, integration and acceptance of complete system
- Concentration on core business and minimal commitment of personal thanks to full-service provision
- High level of system availability for strategic development tools in the supplier environment

Operation of 1500 CAD seats at DaimlerChrysler

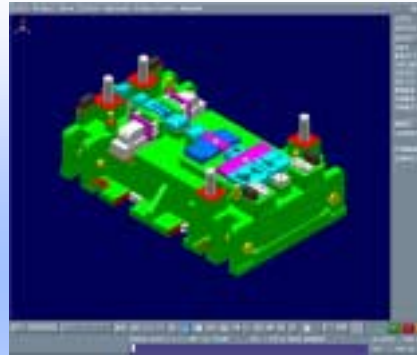
Ensuring high levels of system availability, access to all CAD file servers for all users

- Migration to a standard CAD operating environment
- System and user support based on quality-related prices
- Integration in the complete data-processing system with clearly defined interfaces and the use of standard tools



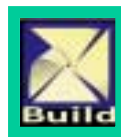
CAD Tool and Die Design - VAMOS at DaimlerChrysler

- Application oriented development die design software by debis IT Services
- Applications in operation:
 - debis-VAMOS/ConvDie Solution
 - Application with all DC Tier



Advantages for DaimlerChrysler:

- Use of standard software
- Only one strategic CAD die design system
- "Die a day"
- Up to 70 % savings in design and manufacturing time



SAP/CAD Implementation and Operation at CarTopSystems (CTS) USA/Germany

Setup finance department with integration of:

- Invoice checking (SAP R/2)
- Finance (SAP R/3)
- Cost center accounting
 - Transition from SAP R/2 to SAP R/3
 - Implementation of SAP R/3 logistics with the modules SD, MM, WM, PP, QM and EDI (CO in parts)

Implementation and operation of CAD/CAE workstations:

CATIA, UG, debis-MEDINA

- Heterogeneous IT environment (IBM/SGI WS, IBM-Host, online data exchange)



Advantages for CTS :

- Consulting and systems implementation along the entire business process from one source



====!"§==Systems=

CAD/CAM Applications Management at DaimlerChrysler (M-Class), USA/Germany

Engineering help desk,
onsite support, operation of the CAD
workstations/servers, engineering service
management

■ Sites:

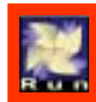
- Stuttgart/Germany (development)
- Tuscaloosa, Alabama/USA (production)

■ Number of seats:

70 workstations
(HP, IBM, SGI & SUN)

■ Systems support and operation of:

- CATIA, SYRKO, CADD5
- Virtual Workshop
- ZGDOK, GIS
- Host based applications



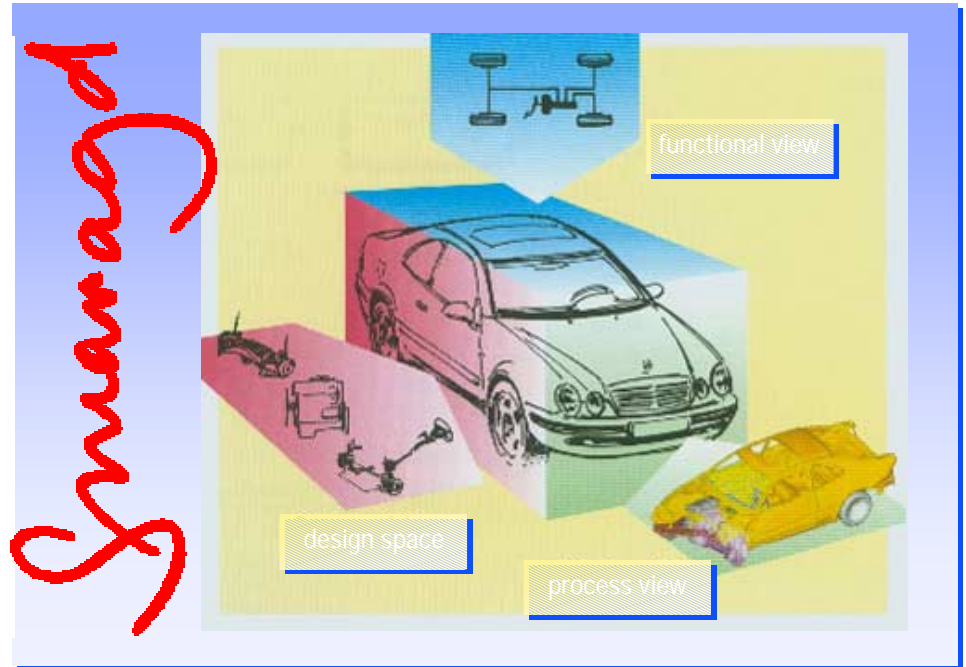
Advantages for DaimlerChrysler:

- One contact for production operation of total environment
- Full Service offering for heterogeneous IT world
- Reduced reaction time

PDM with SMARAGD at DaimlerChrysler AG

SMARAGD is the EDM system of DaimlerChrysler to manage product and top geometry data (based on METAPHASE)

- Delivery of all documents concerning each part or component
 - Geometry data management and search
 - Association of geometry to the BOM
 - Worldwide access and data exchange with various access rights
- ➔ SMARAGD is the follow-on to GIS host and provides functional enhancements, e.g. the integration of different applications and significantly improves support of the product development process



Advantages for DaimlerChrysler:

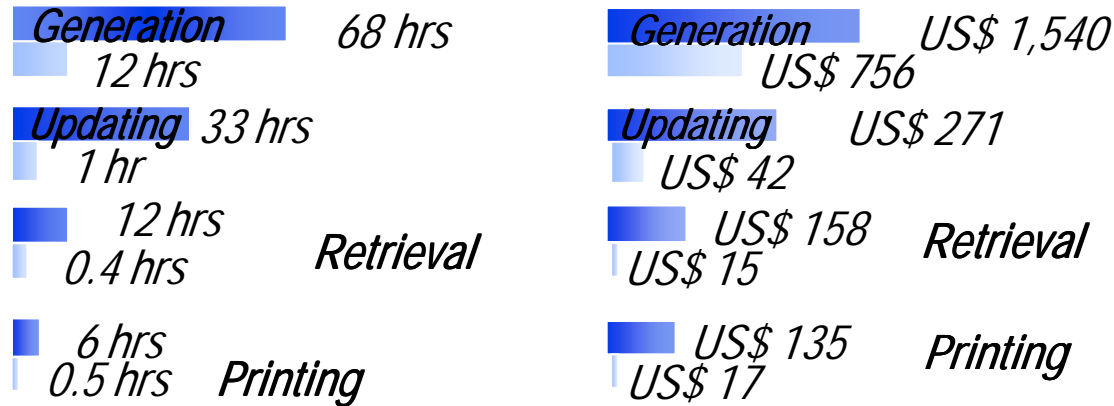
- Worldwide informations for product and top geometry data
- Basis for Digital Mockup / Digital Car
- Improved quality at the product development process



CAPPE

Benefits

Research conducted with fifteen ISO-9000 and/or QS-9000 certified customers



Average time per process (hours)

Average cost per process (US\$)

Potential Savings of \$1,274 per part

