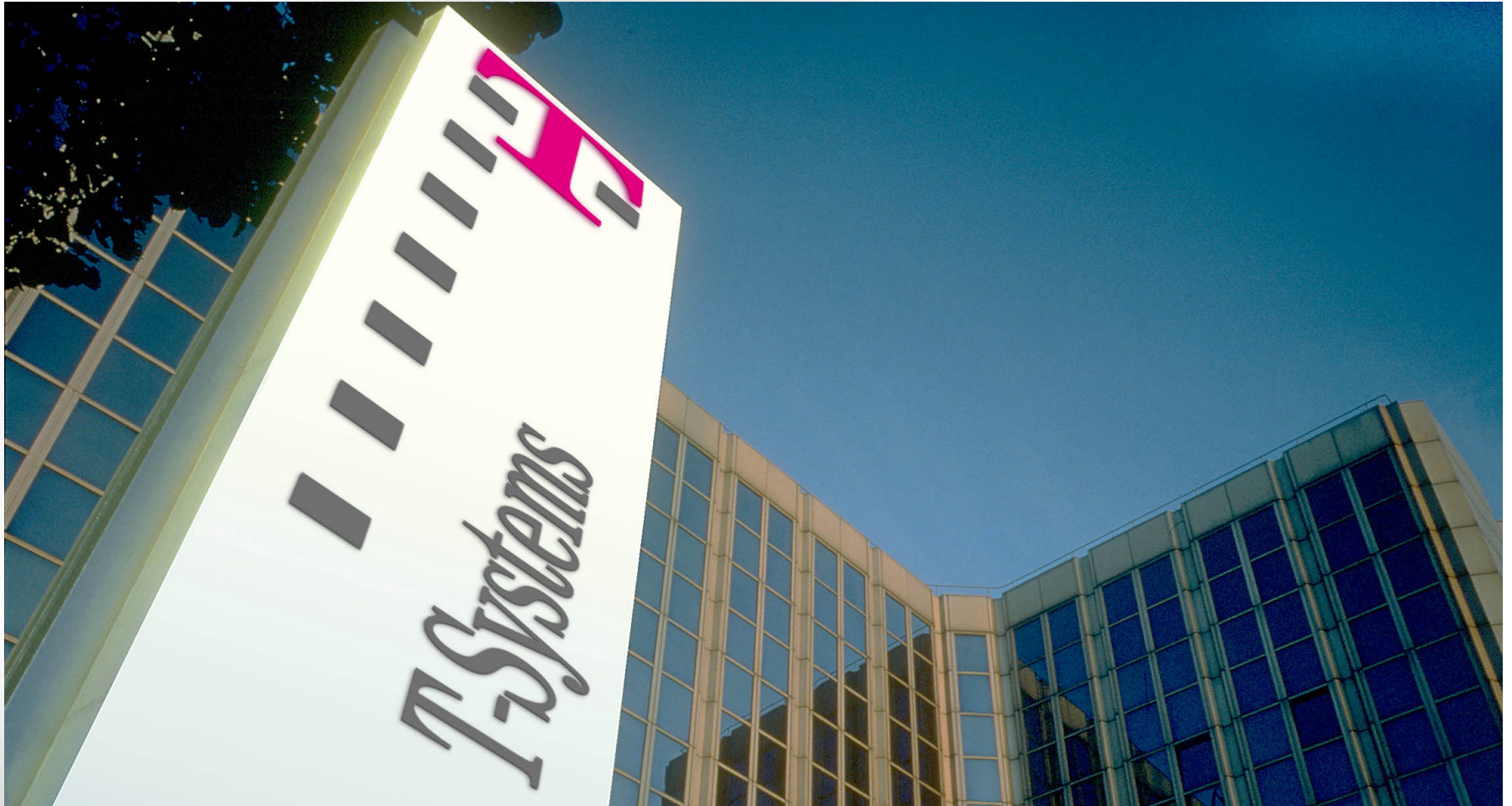


# Product Strategy



Tino Schlitt, BU EPDM/G

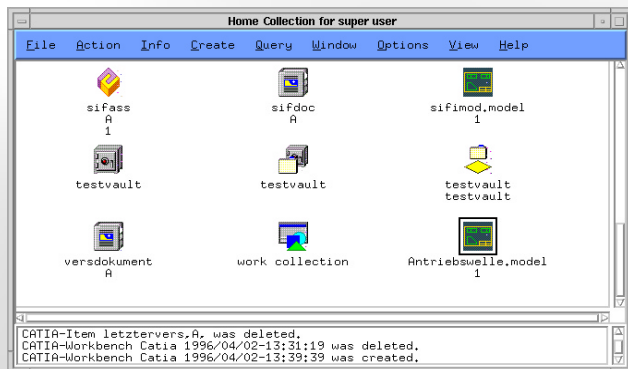
April 2002

# Product Development / Strategy

## PDM Broker - Overview

- Synchronization of different CAD, PDM & MRP Systems
- No leading System
- 1st Release = Integration of Metaphase and CATIA V5
- PDM-Broker 1.1 is available
- [www.pdm-broker.com](http://www.pdm-broker.com)

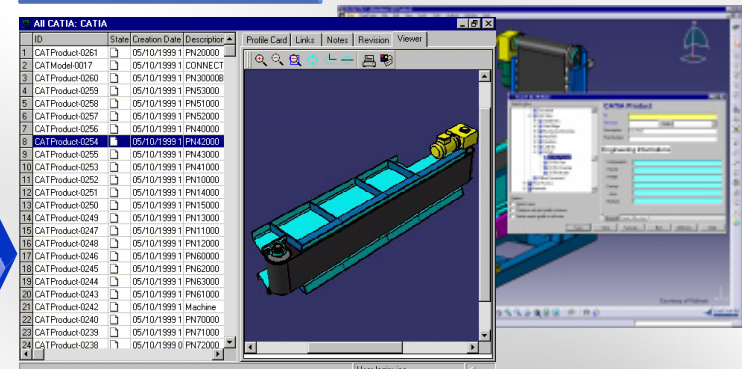
### Metaphase as Global PDM



PDM  
Broker

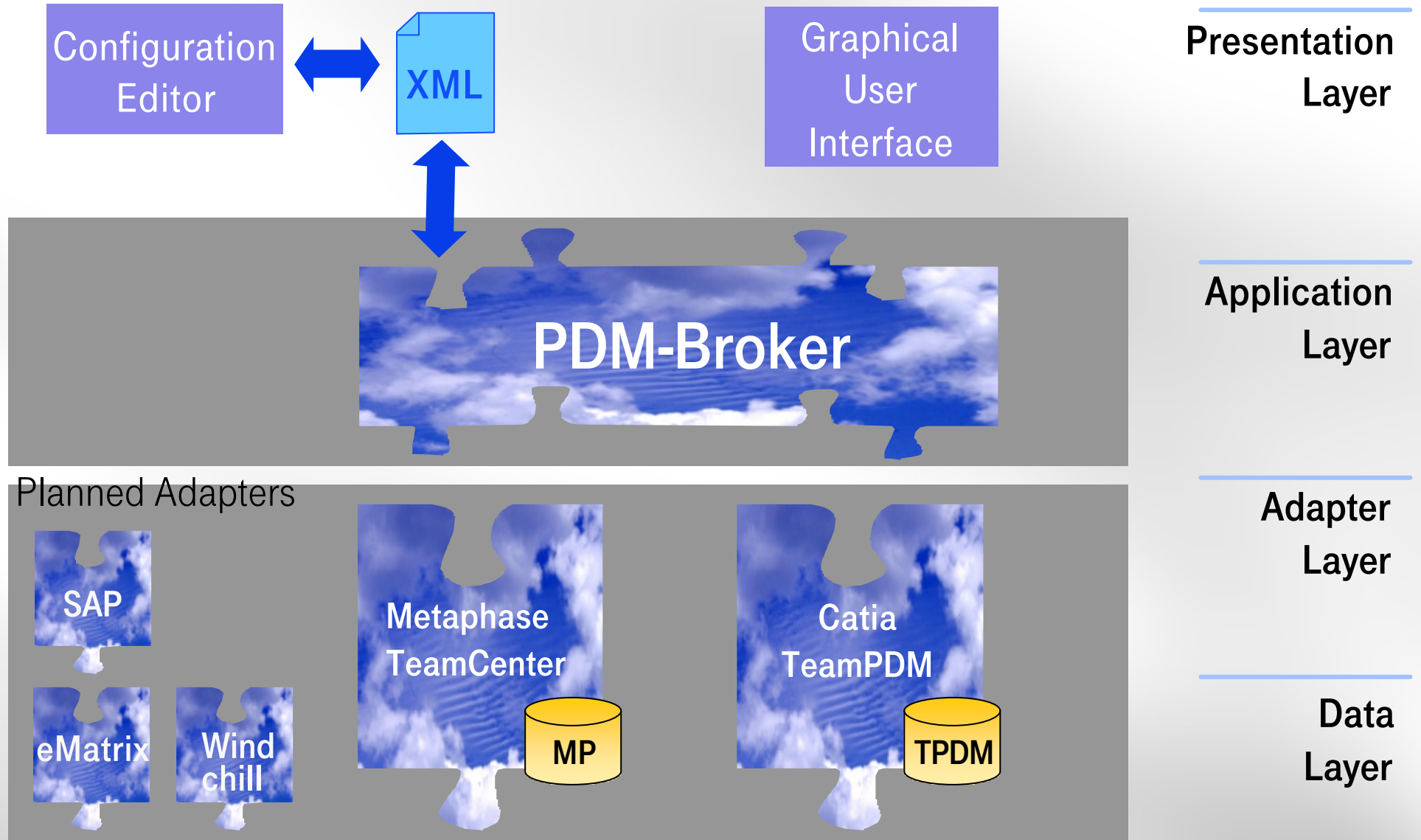
### TeamPDM

### CATIA V5



# Product Development / Strategy

## PDM-Broker Architecture





# Product Development / Strategy

## Benefits



Designer

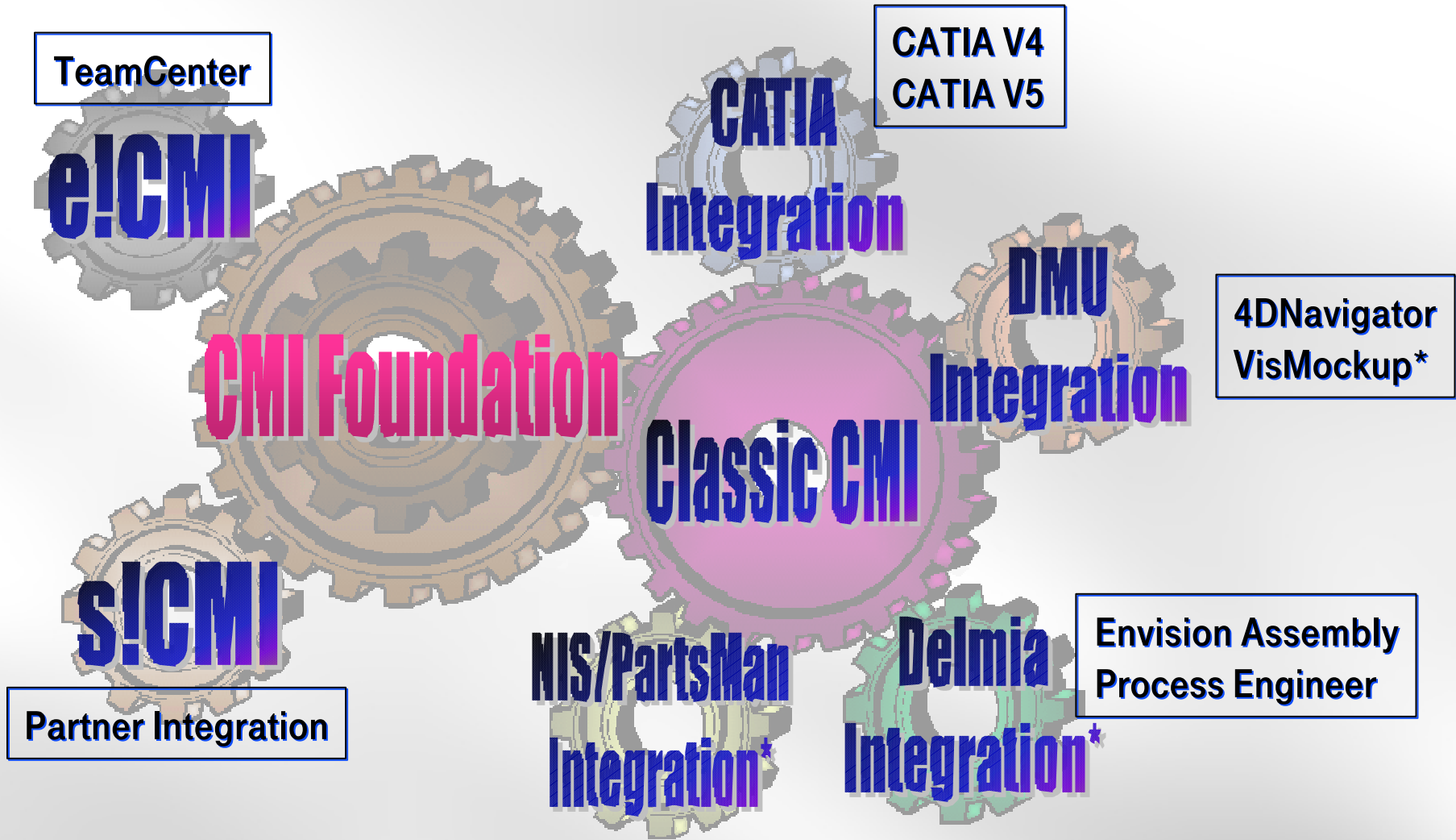
Design Group Manager

- Concurrent Engineering accelerates the design process
- Using each system in correspondence with the specific roles of the company
- Team-oriented design process in a familiar “CAD-environment”
- Focused view on design specific data
- Less training efforts lead to cost reduction
- High user acceptance



# Product Development / Strategy

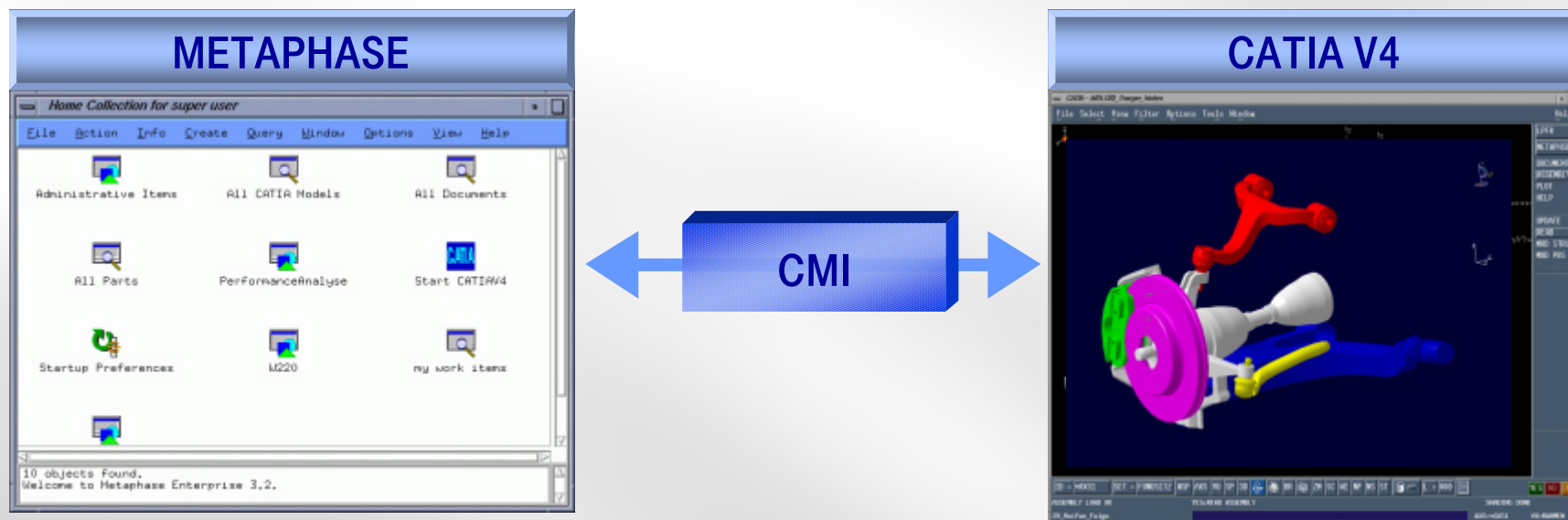
## Technical Know-How



# Product Development / Strategy

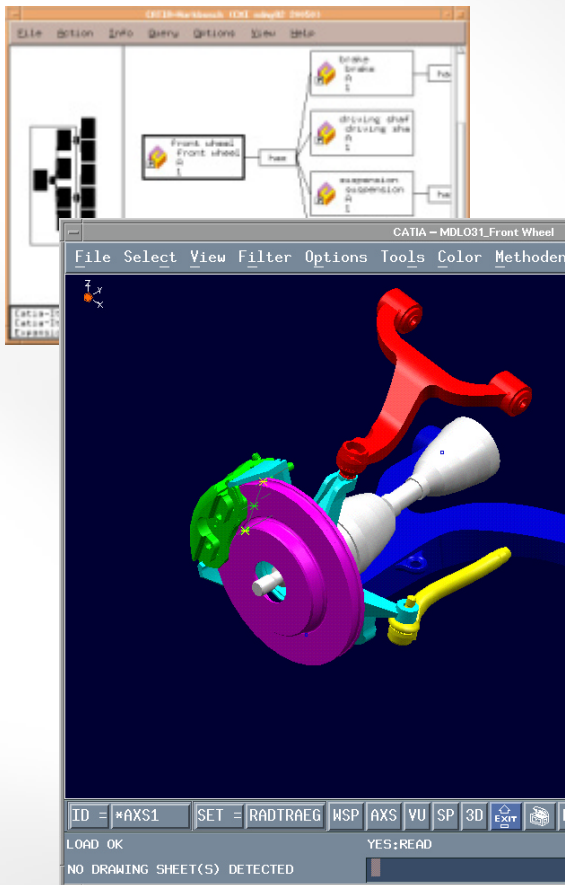
## CATIA Metaphase Interface

- Integration of CATIA V4 / V5 and TeamCenter (Metaphase)
- TeamCenter (Metaphase) as global PDM system
- Product since 1995
- Assembly functionality in CATIA V4
- Integration of bill of material and geometry data
- Wide range of customization possibilities
- [www.cmi-support.com](http://www.cmi-support.com)



# Product Development / Strategy

## CMI CATIA V4 Integration



### Key features

- Access control of CATIA V4 data in Metaphase
- Change and usage control in collaborative product development in the distributed world
- CATIA V4 data in workflow and company wide access
- Simultaneous management of CATIA V4 data and structures
- Integration of bill of material and geometry data
- Working with Multiple Level Assemblies
- Consequent separation of the CAD relevant actions from PDM relevant actions

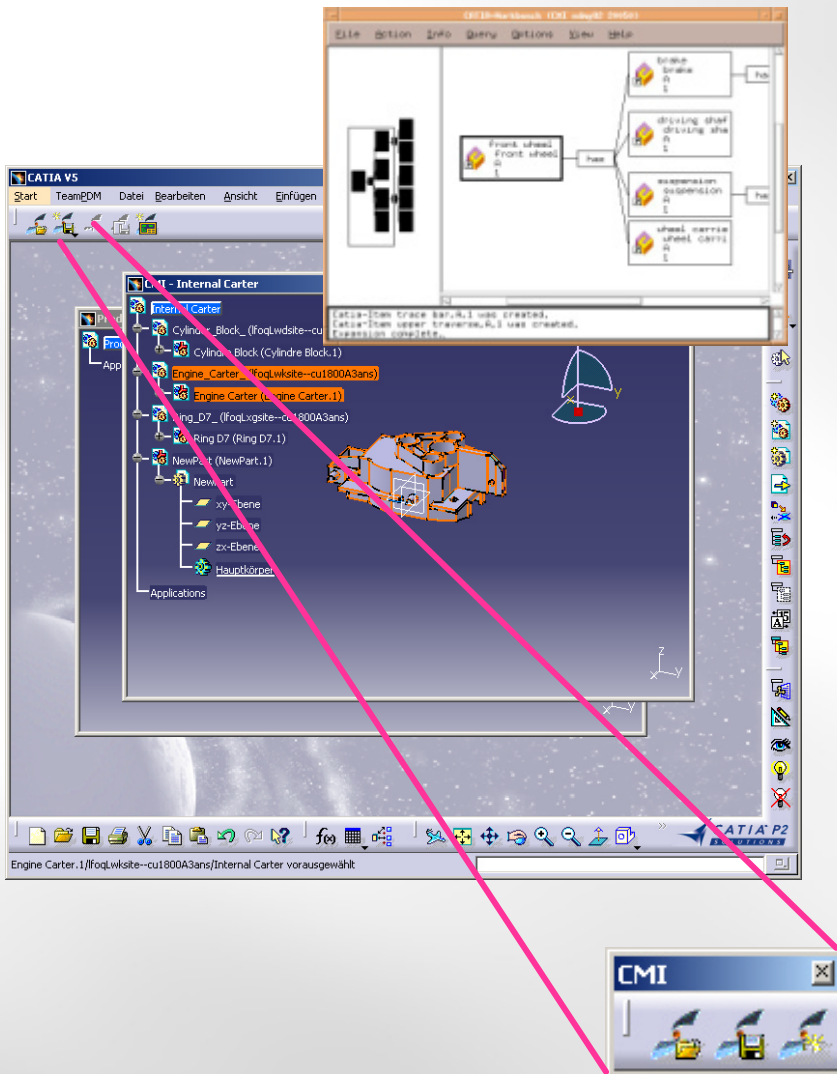
### Technical highlights

- Modification of the position of parts in the structures
- Search for CATIA V4 data by different attributes
- Plot file integration for CATIA V4 models with automatic drawing title block filling



# Product Development / Strategy

## CMI CATIA V5 Integration (CMI 8.1)



### Key features

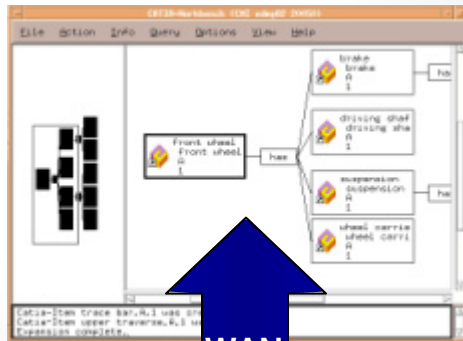
- Support of Win2000/NT and UNIX
- Management of CATParts and CATDrawings (CATIA V5 models)
- Basic (on the fly) support of DMU functionality (for both V5 and V4 models)
- Handling of transformations (analogous to CMI CATIA V4 integration)
- Parallel support of CATIA V4 and V5

### Technical highlights

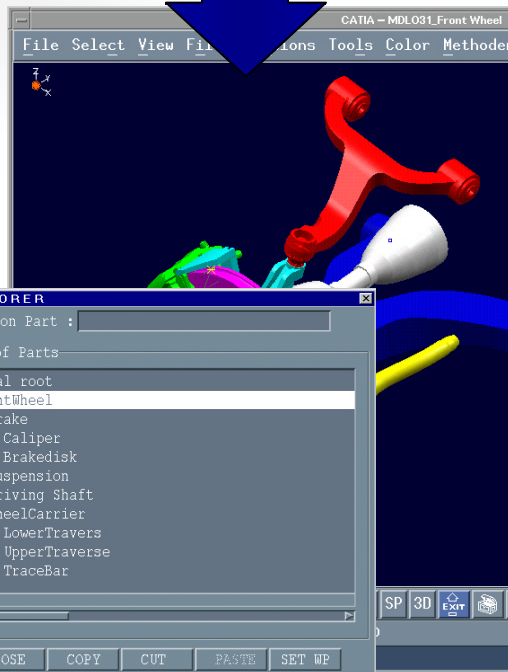
- Multiple window support in CATIA
- Basic support of CPL associatives
- Create/Save As for CATParts/CATDrawings
- Create for CATParts added into a CMI product structure

# Product Development / Strategy

## s!CMI – The Supplier Integration



WAN



### Key features

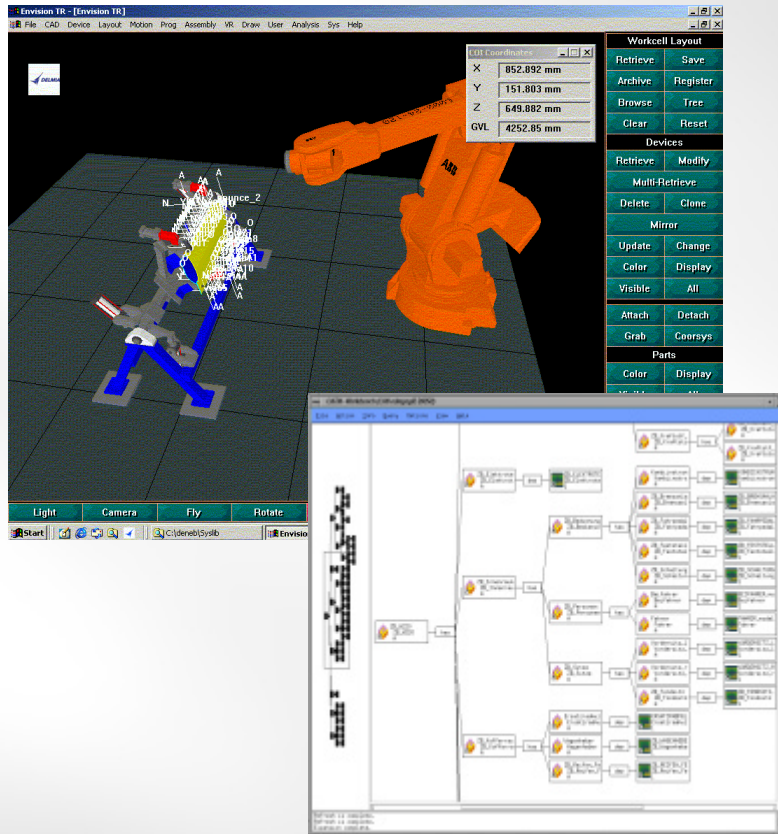
- s!CMI is a lean integration of off-site CATIA work places into the PLM system TeamCenter/Metaphase
- s!CMI is based on CMI technology

### Technical highlights

- The partner can work off-site with product structures provided by the customer
- Full control over the suppliers design context
- CMI Workbench functionality
- Structured position transformation
- Product structure browser
- Design in context

# Product Development / Strategy

## Delmia Integration



### General

- Customer specific solution (LM, DC)
- Currently supports ENVISION Assembly (Process Engineer planned in near future)

### Benefits

- Supplies BOM structure with respective object information, easy linking geometric data and their corresponding transformation in a simple way
- Simple adaptation of the interface and integration of further systems
- Takes the user one step closer to an integrated planning and manufacturing environment
- Ready for further simulation- and planning-applications

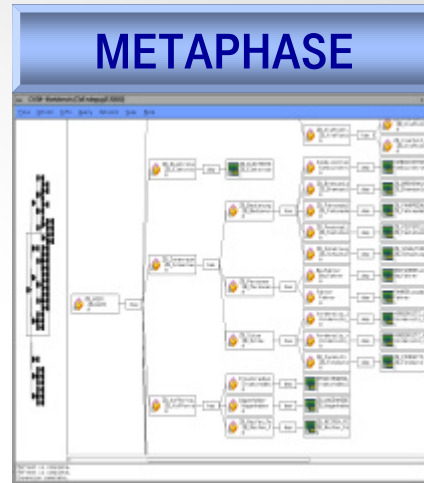
### Key Features

- Intuitive CMI workbench concept
- Open meta data exchange based on XML



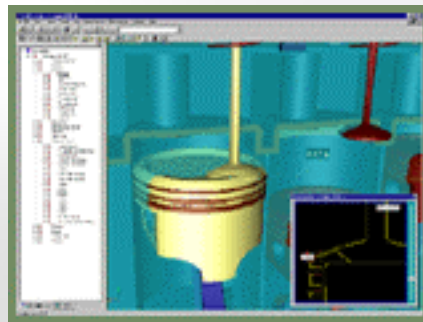
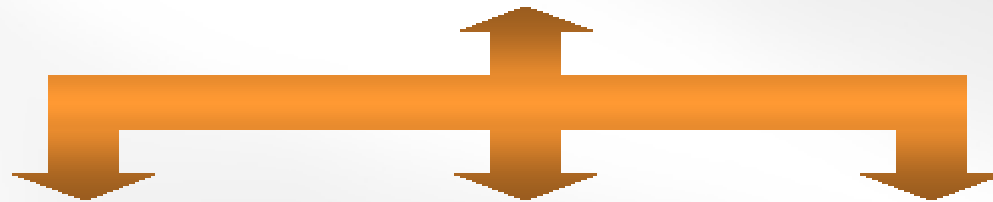
# Product Development / Strategy

## DMU Integration

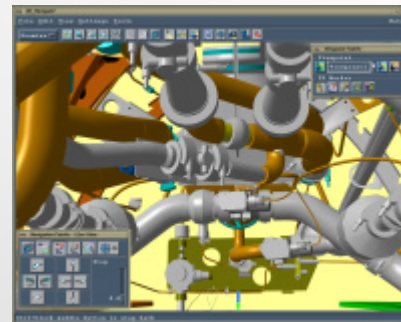


### Benefits

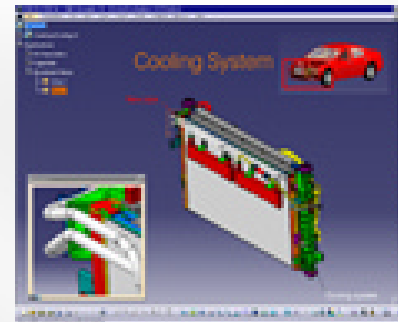
- Open architecture enables customer specific solutions for support of individual DMU processes
- Seamless integration of PDM, CAD and DMU
- Transparent CMI Workbench concept



VisMockup



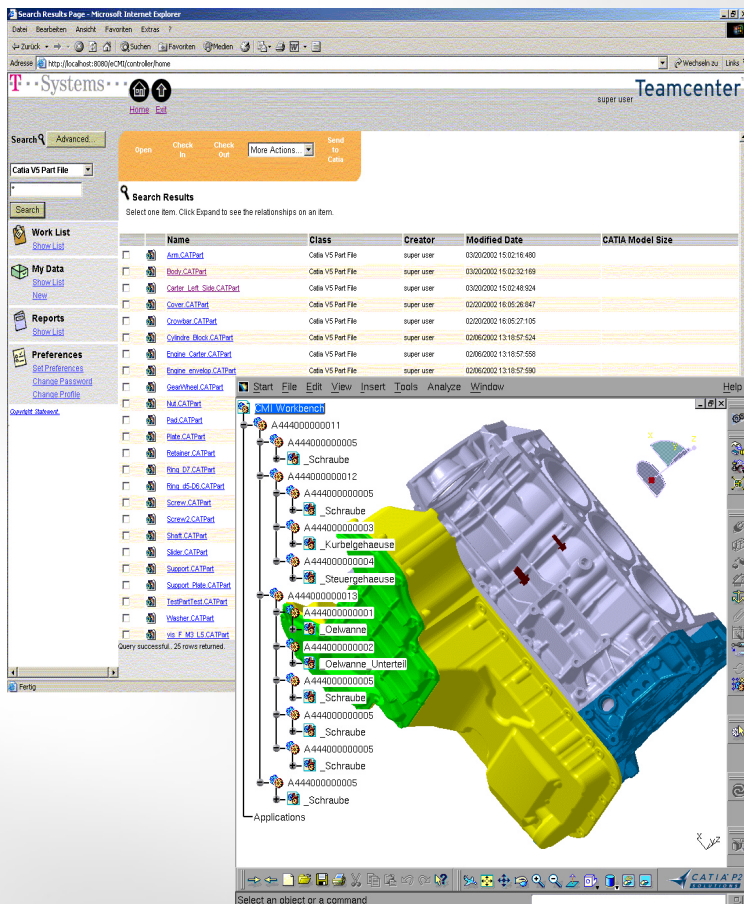
4DNavigator



DMUNavigator

# Product Development / Strategy

e!CMI



## General

- Web-based solution of standard CMI
- Allows suppliers, partners and customers to quickly interact in collaborative environment via web browser

## Benefits

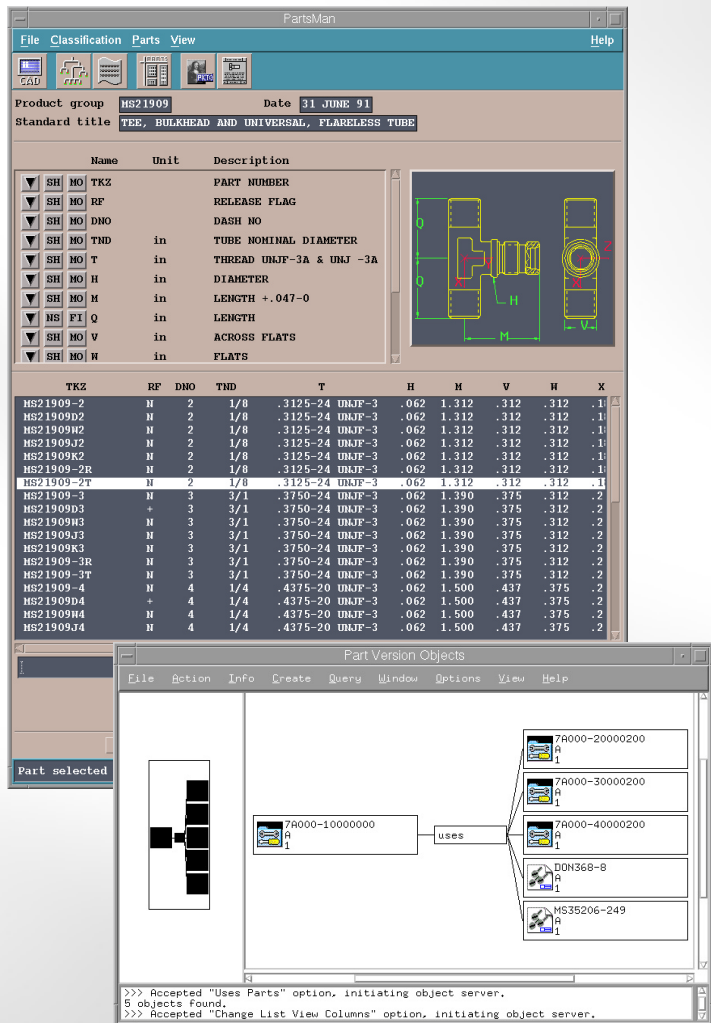
- All changes are immediately visible to all logged-in participants
- web-native thin client lets users work with web browsers that they already use and understand
- No installation of a special PDM software is required
- Easy access of data whenever and wherever

## Key Features

- Search for CATIA V5 data by different attributes every time from anywhere (Browser, Mobile, PDA)
- Download of single CATIA models and entire assembly structures (upload in development)

# Product Development / Strategy

## CMI - NIS/PartsMan Integration



### General

- Customer specific solution
- Enables the management of standard parts like “usual” parts in TeamCenter (Metaphase)

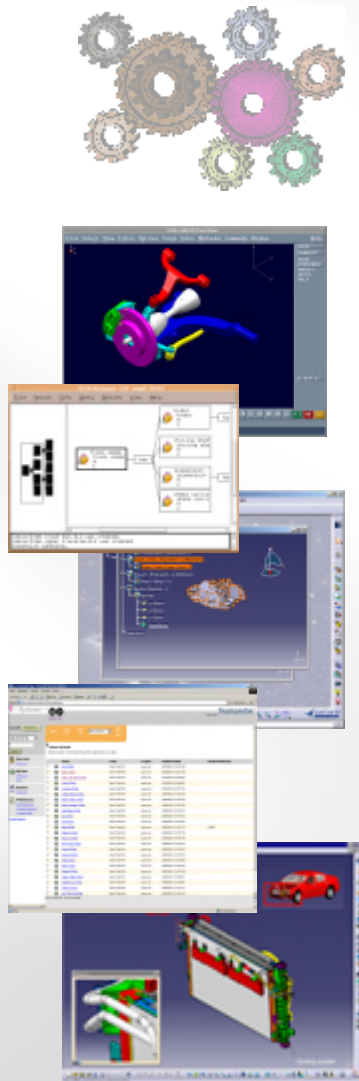
### Key Features

- PDM is the leading system
- Part Master is created and updated in PDM (Create, Delete, Update, Search, Information, Release)
- NIS/PartsMan
  - Powerful tool for the use and management of standard parts (simple to use; search engine)
  - Use of virtual geometry pool reduces costs of the design process



# Product Development / Strategy

## CMI - Connect the future



- CMI Product Family
  - e!CMI prototype to product
  - s!CMI from customer specific solution to product
  - CMI NIS/PartsMan
  - CMI DMU Integration
- CMI CATIA V4
  - Feature enhancements
  - Customer specific enhancements
  - Ongoing full support of CMI CATIA V4
- CMI CATIA V5
  - Support of
    - CATParts, CATProducts
    - CATIA V5 embedded tools
  - Customer specific developments

# Product Development / Strategy

## CMI-Releaseplan 2002

CMI Version	Deliver Date	Base Software	OS	Functionality / Changes
<b>8.1.x</b>	28.02.2002	Metaphase 3.2 TeamCenter CF 2.0 CATIA 4.1.8-4.2.4 CATIA V5 R7 CATIA V5 R8	AIX 4.3 HP-UX 11.0 IRIX 6.5 Solaris 2.8 Win2000/NT	<b>Current Release of CMI</b>
<b>8.2</b>	30.06.2002	Metaphase 3.2 TeamCenter CF 2.0  CATIA 4.1.8-4.2.4 CATIA V5 R8	AIX 4.3 HP-UX 11.0 IRIX 6.5 Solaris 2.8 Win2000/NT	<ul style="list-style-type: none"> <li>• <b>Document centric mgmt. of CATProducts</b> <ul style="list-style-type: none"> <li>– Constraints</li> <li>– Multi Model Links</li> </ul> </li> <li>• <b>Full workbench functionality for CATIA V5</b> <ul style="list-style-type: none"> <li>– start actions from CMI Workbench:                             <ul style="list-style-type: none"> <li><b>Highlight in CATIA</b></li> <li><b>Set Workplane</b></li> <li><b>Send Selected Items</b></li> </ul> </li> </ul> </li> <li>• <b>Parallel support of CATIA V4 and V5</b></li> <li>• <b>CMI property page in CATIA V5</b></li> </ul>
8.3	<i>1st.Q / 2003</i>	<i>To be defined</i>	<i>To be defined</i>	<ul style="list-style-type: none"> <li>• <i>Active support of DMU Navigator (CGR files)</i></li> <li>• <i>Drawing Frame update with PLM attributes</i></li> <li>• <i>Basic support of parametric design (variants)</i></li> </ul>