

# Live presentation CMI Release 8 Citrix integration Competence Unit EDM/G

Steffen Maier  
Project Manager CU EDM/G

T-Systems  
debis Systemhaus Industry GmbH

[steffen.maier@t-systems.de](mailto:steffen.maier@t-systems.de)



# Contents

Exemplary environment

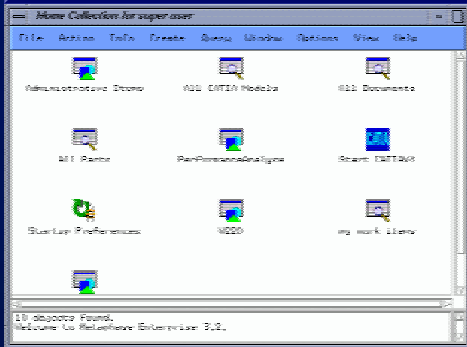
Demonstration example

# Exemplary environment



# Demonstration scenario

## Metaphase



### ■ Handling of "complex" assemblies in Metaphase

- ⇒ Query for assembly objects in database
- ⇒ Expansion of "Trego" (about 200 parts) in browser

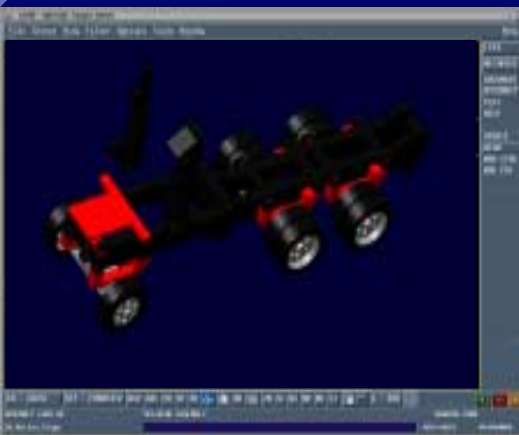
**No remote network access to database!**

**Look and feel of Metaphase like in a local installation!**

## CMI Workbench



## CATIA



### ■ Handling of "complex" assemblies with CMI

- ⇒ Expansion of "Trego" in CMI Workbench
- ⇒ Mark of subassembly "Basis" in Workbench
- ⇒ Transfer of "Basis" to CATIA V4
- ⇒ Modification of position and update in Metaphase

