

Live presentation CMI Release 8 including CATIA V5 Competence Unit EDM/G

Steffen Maier
Project Manager CU EDM/G

T-Systems
debis Systemhaus Industry GmbH

steffen.maier@t-systems.de



Contents

Features of CMI V8

Technical aspects - 1st step of CATIA V5 integration

Future - 2nd step of CATIA V5 integration

Exemplary environment

CATIA V4 Interoperability

CATIA V4/ V5 Interoperability

CATIA V5 Interoperability

Features of CMI V8

■ CATIA V4 integration



- ⇒ Handling of CATIA Models (incl. Support of splitted Models)
- ⇒ Handling of multiple level assemblies
 - ◆ Additional transformation functionality
 - ◆ Support of multiple occurrences
- ⇒ Update of title blocks in drawing frames (incl. management of Plot-files)
- ⇒ 4DNavigator integration



■ Support of Citrix ThinClient technology

- ⇒ Additional module (add-on to CATIA V4 integration)

■ Software-Kernel for CATIA V5 integration



- ⇒ Proof of concept enables development of customer specific solutions
- ⇒ Parallel support of CATIA V4 and V5
- ⇒ Handling of single Models and multiple level assemblies



Technical aspects

1st Step of CATIA V5 integration

- Based on CATIA V5 scripting language

- ⇒ Solution only available for UNIX (incompatible with Windows NT)
- ⇒ No access to CATIA V5 User Interface
- ⇒ Scripting language approach suffers from instability
- ⇒ Future release planned based on stable CAA2 APIs

- Support of CATPart files; CATProduct files are not stored in Metaphase

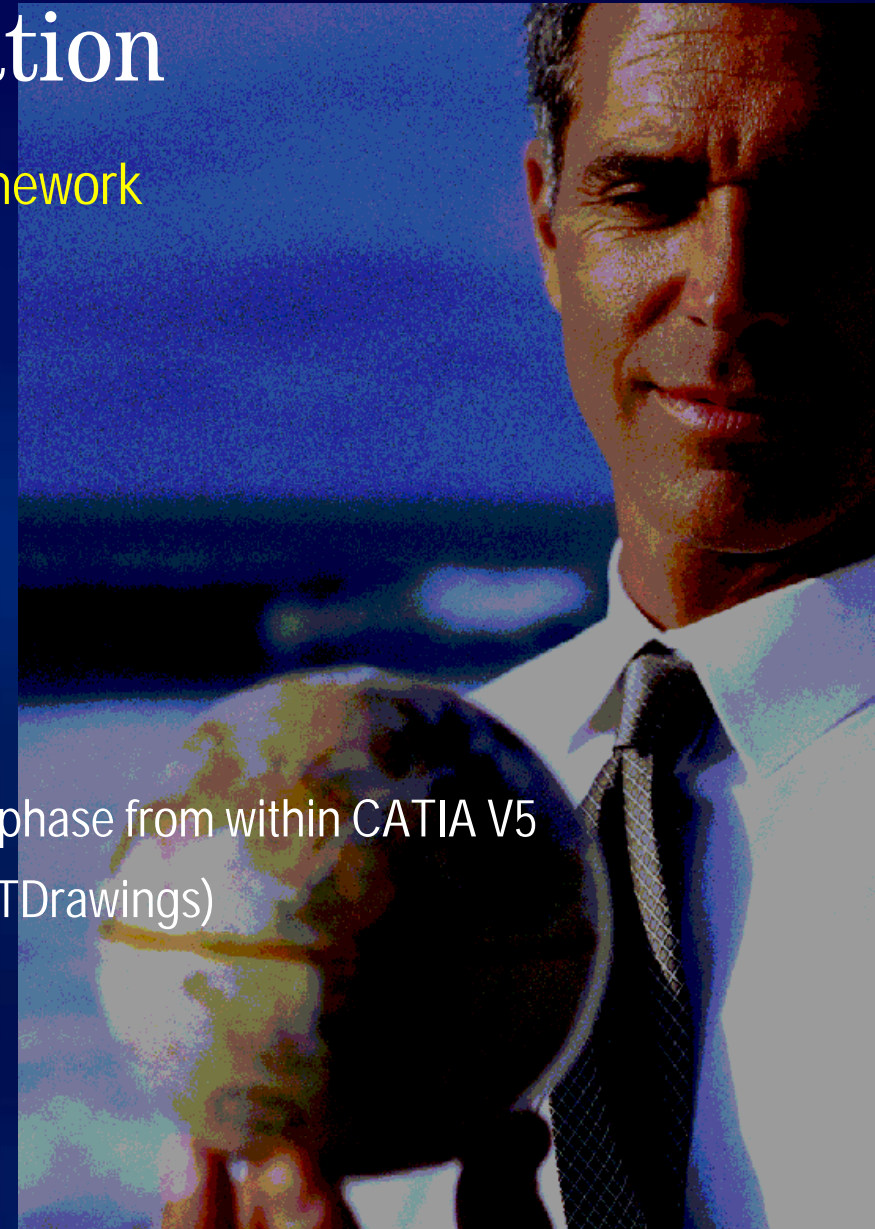
- ⇒ Virtual assemblies in CATIA V5
- ⇒ Full support of Metaphase configuration management without conflicts
- ⇒ Constraints are not stored in Metaphase (but can be used for positioning)
- ⇒ Future release planned to support CATProduct files (incl. Constraints)



Future

2nd Step of CATIA V5 integration

- Based on CAA2 APIs offered by development framework
 - ⇒ Solution available for UNIX and Windows NT
 - ⇒ Full integration in terms of User Interface
- Support of CATProduct files
 - ⇒ Handling of CATIA V5 Constraints
 - ⇒ Metaphase configures the product structure
- Enhanced functionality
 - ⇒ Creation of assemblies and single models in Metaphase from within CATIA V5
 - ⇒ Support of additional CATIA V5 file types (e.g. CATDrawings)
 - ⇒ ...



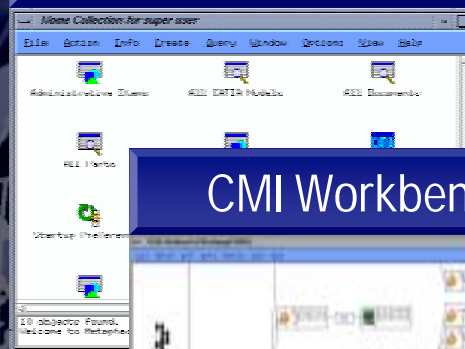
Exemplary environment

Leinfelden
User Meeting

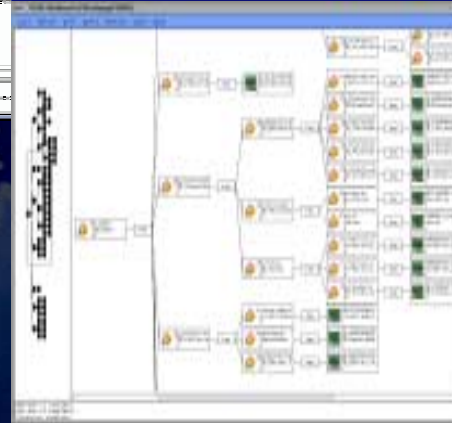


CATIA Workstation
Local Metaphase and
CATIA installation

Metaphase



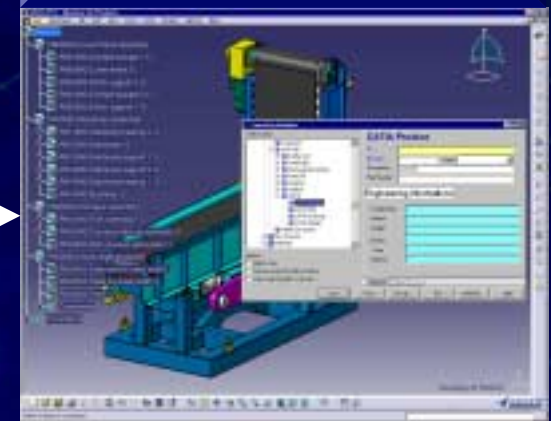
CMI Workbench



CATIA V4

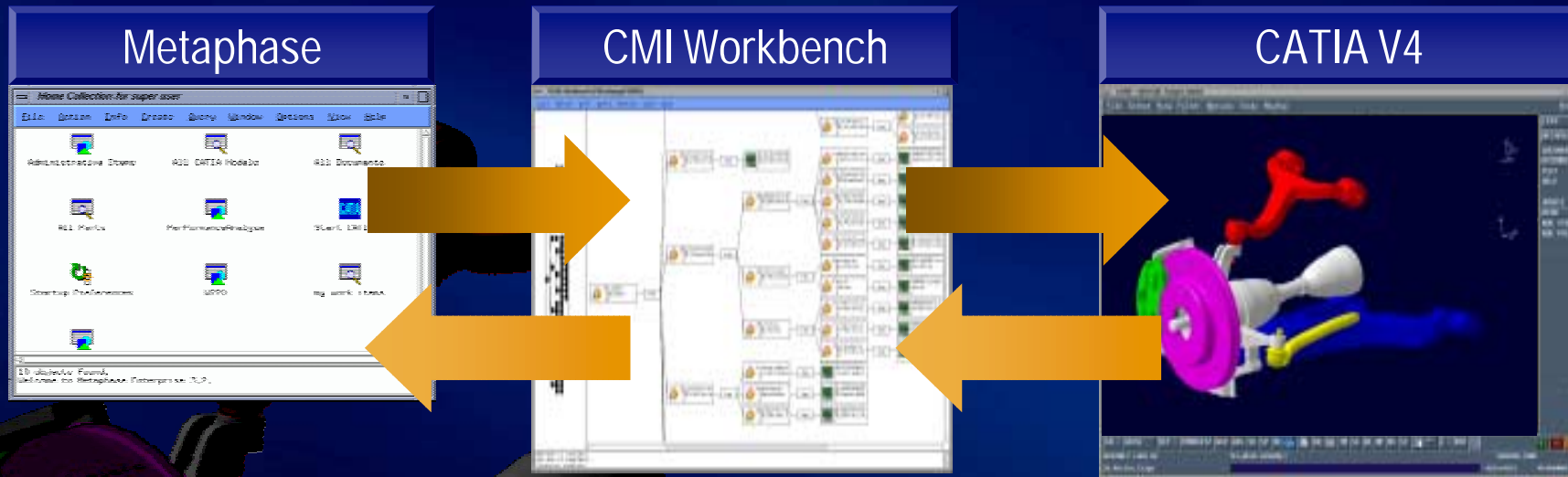


CATIA V5



Demonstration scenario A

CATIA V4 Interoperability



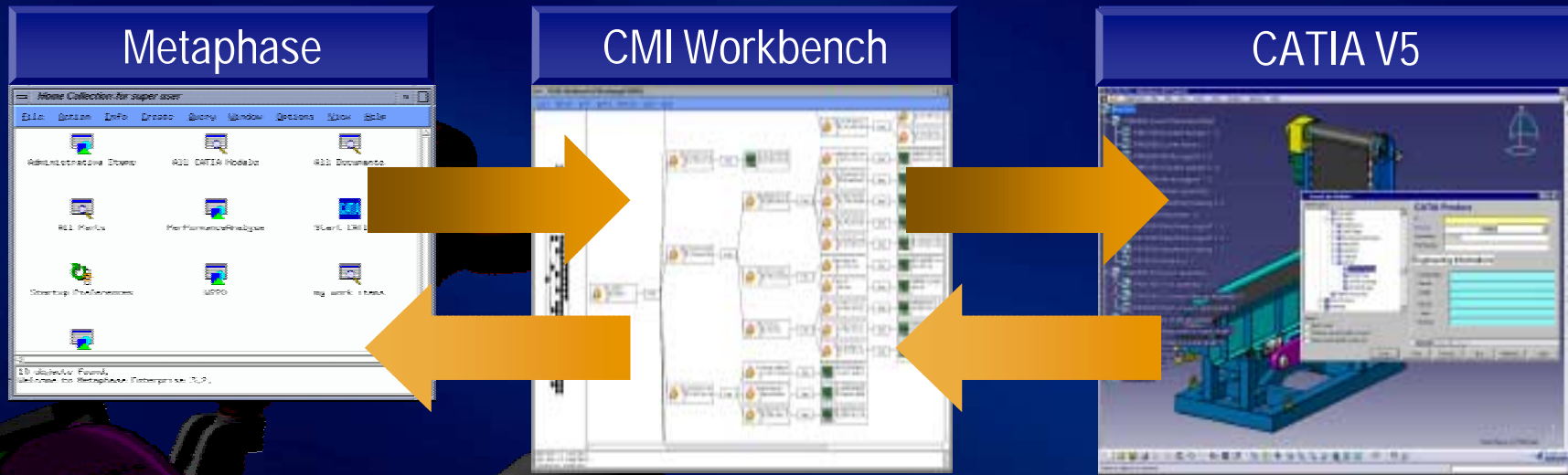
■ Exchange data between Metaphase and CATIA V4

- ⇒ Query for assembly objects in database; drag& drop "Frontwheel" in Workbench
- ⇒ Expand selective "Suspension" and "Brake" subassemblies in Workbench
- ⇒ Mark subassembly "Suspension" in Workbench; transfer "Suspension" to CATIA V4
- ⇒ Get Info about "Upper Traverse Control Arm" in CATIA V4
- ⇒ Highlight "Lower Traverse Control Arm" in Workbench
- ⇒ Transfer CATIA Model "Drawingframe" via Doubleclick from Metaphase to CATIA V4



Demonstration scenario B

CATIA V4/ V5 Interoperability



■ Exchange data between Metaphase and CATIA V4

- ⇒ Query for assembly objects in database; drag& drop "Frontwheel" in Workbench
- ⇒ Expand "Frontwheel" assembly in Workbench; transfer "Frontwheel" to CATIA V4
- ⇒ Change position of "Brake Disk" in CATIA V4; update position change in Metaphase

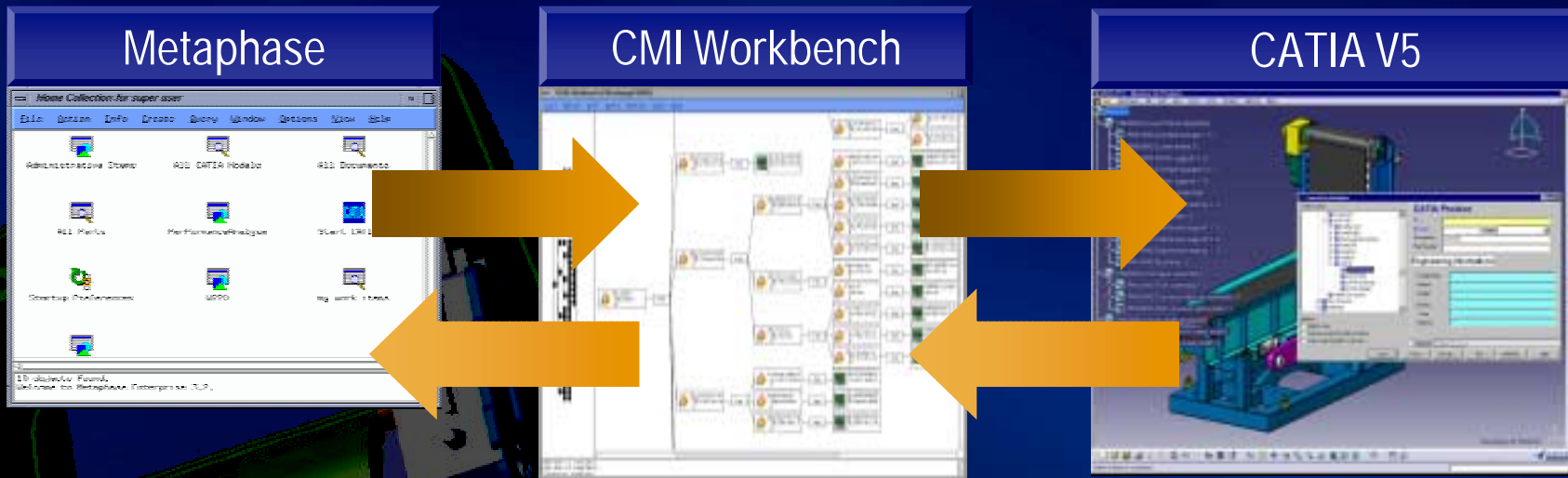
■ Exchange data between Metaphase and CATIA V5

- ⇒ Transfer "Frontwheel" (from same Workbench) to CATIA V5
- ⇒ Analyze "Frontwheel" in DMU Navigator of CATIA V5



Demonstration scenario C

CATIA V5 Interoperability



■ Exchange data between Metaphase and CATIA V5

- ⇒ Query for "Hacksaw" example in Metaphase
- ⇒ Drag& drop "Hacksaw" assembly in Workbench
- ⇒ Switch "Display Models" toggle "On"
- ⇒ Expand "Hacksaw" assembly in Workbench (including CATParts)
- ⇒ Transfer of "Hacksaw" assembly to CATIA V5
- ⇒ Modify geometry (add drilling to cabinet) in CATIA V5; update change in Metaphase
- ⇒ Modify position in CATIA V5; update position change in Metaphase

