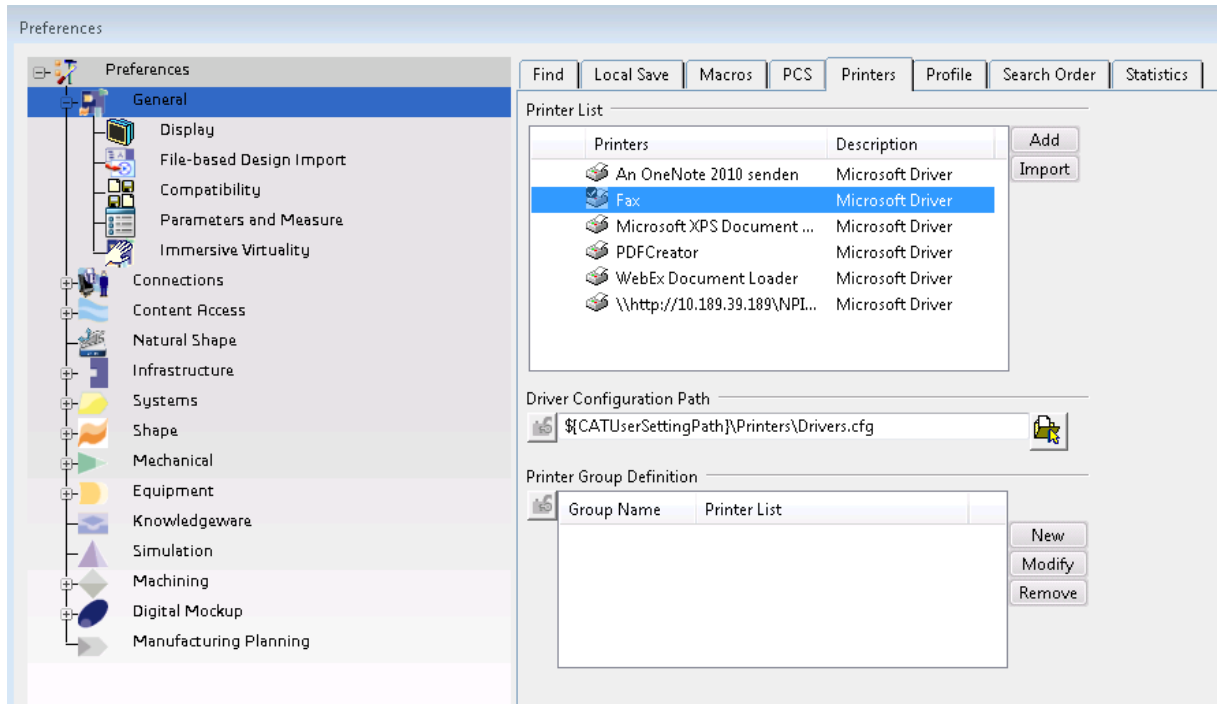


# Printer Setup for TSI3DXBatch

TSI3DXBatch can be used to create PDF files of provided Drawing objects. To create the PDF files the TSI3DXBatch uses the 3DX batch utility PLMPrintBatch.

Configuration to export all sheets of a Drawing into a single PDF file:

1. i. Go to Me/Preferences/General/Printers tab.

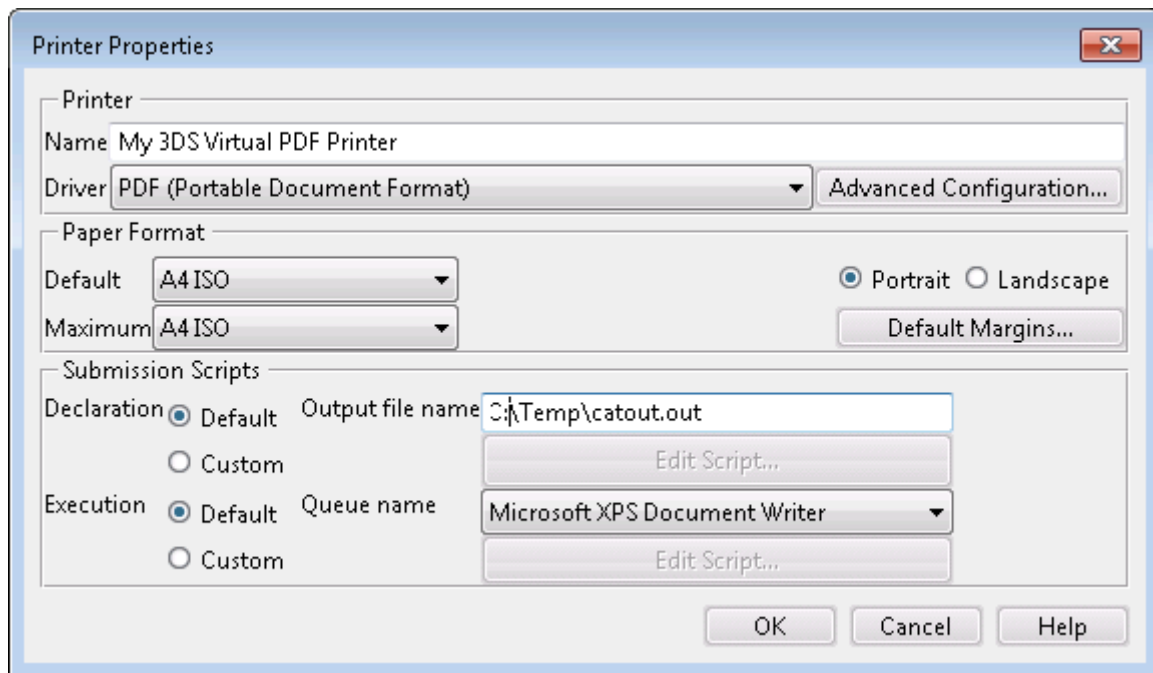


2. Click on Add button.  
Select 3DS Virtual Printer and Click 'OK'.

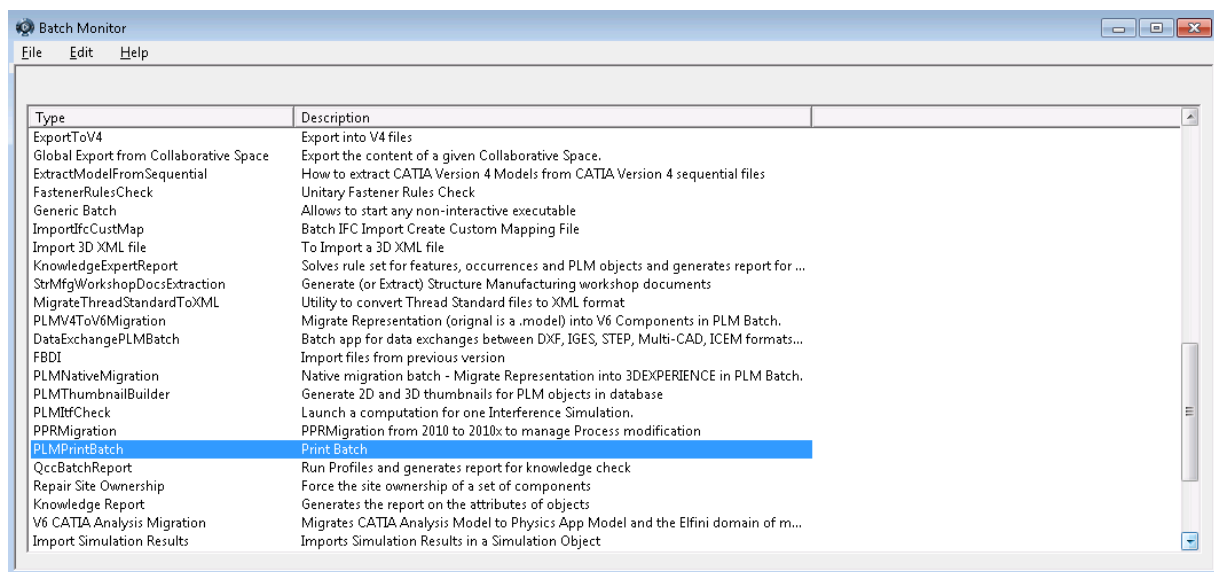


(Printer Properties window is displayed).

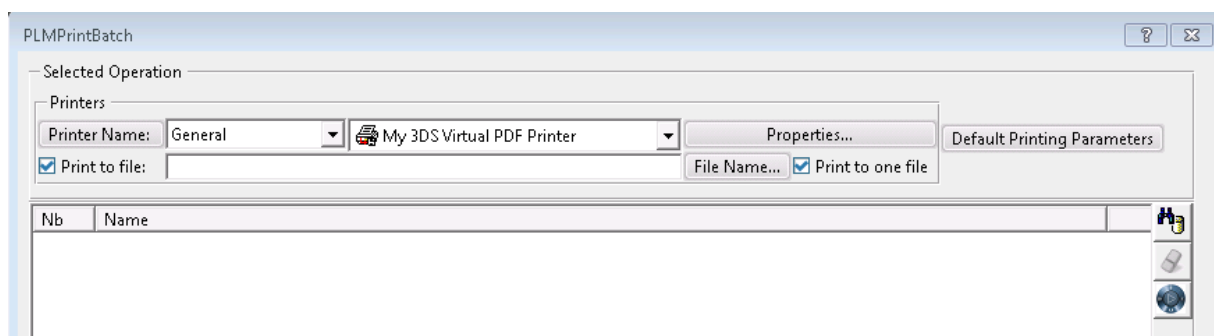
3. Give any name to Printer (For example: My 3DS Virtual PDF Printer).
4. In Driver drop down menu, select: PDF (Portable Document Format).



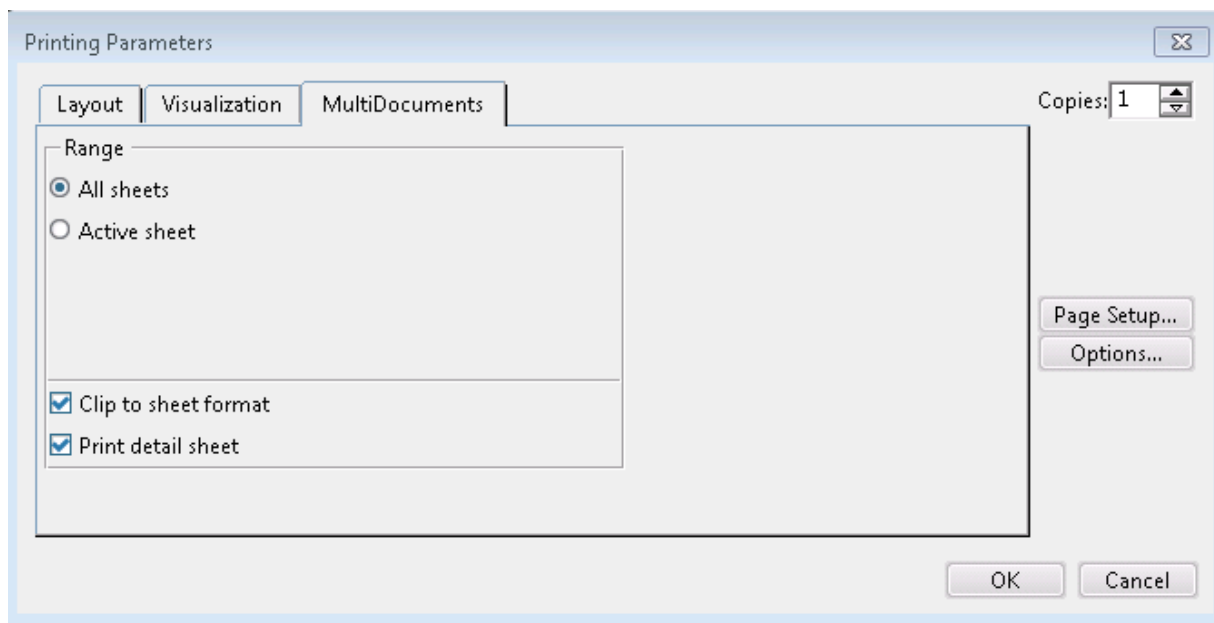
##### 5. Open Batch Management and select PLMPrintBatch



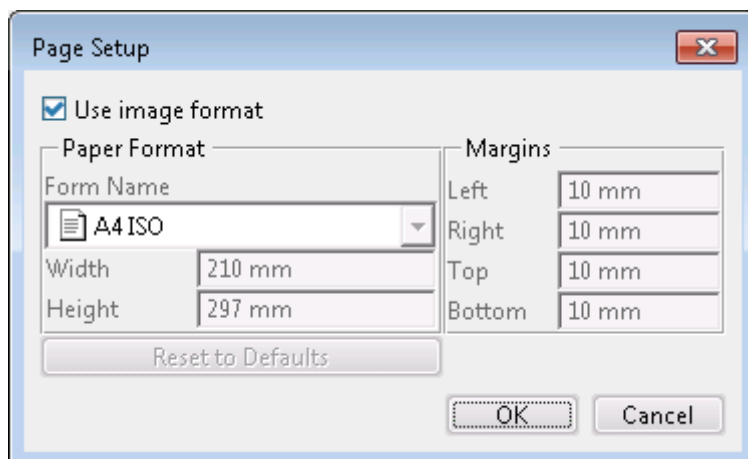
##### 6. Select the configured DS Virtual PDF Printer in the drop down list. Also select "Print to file" and "Print to one file" (make sure "File Name..." stays empty)



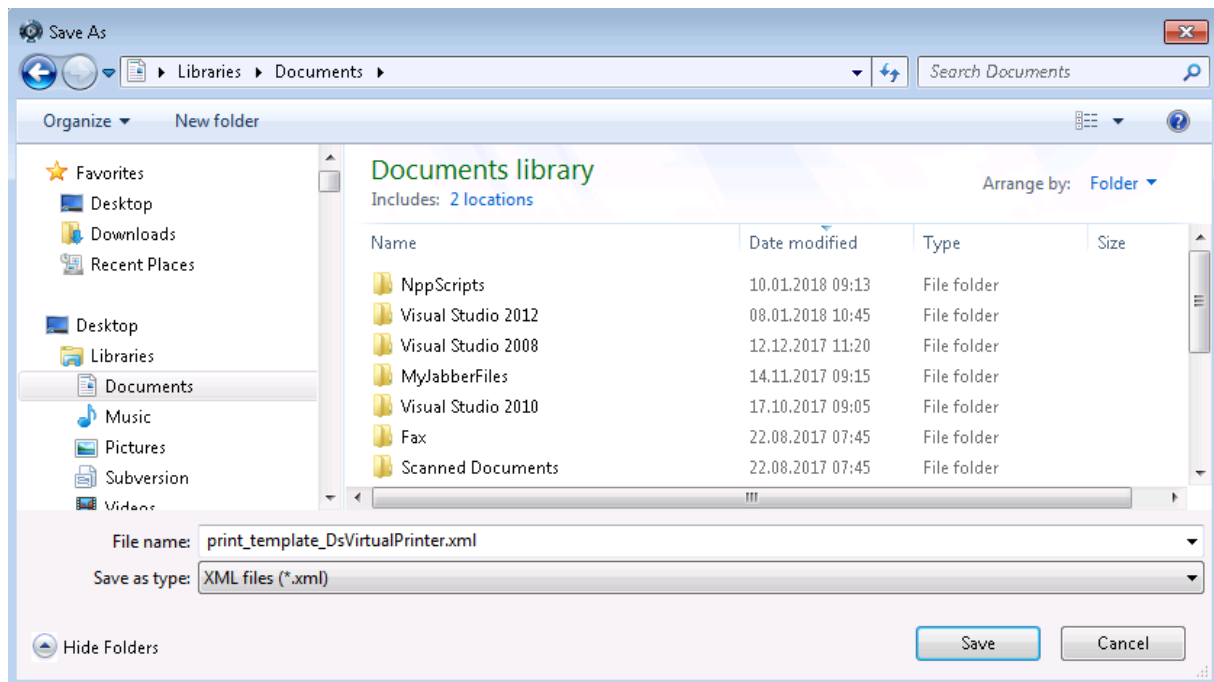
7. Open “Default Printing Parameters” and select “All sheets” in the MultiDocuments tab



8. Open “Page Setup...” in “Printing Parameters” and select “Use image format”



9. Click OK to “Page Setup” and “Printing Parameters”
10. Click Save in PLMPrintBatch to create the needed print template file



To use the print\_template\_DsVirtualPrinter.xml on a different target host you must check/adapt the following:

- Make sure the DS Virtual Printer is configured on the target host. The name of the DS Virtual Printer must be the same on all hosts where you want to use the template.
- The value of the tag PRINT\_CLIENT in print\_template\_DsVirtualPrinter.xml must be adapted to the hostname of the target host. Depending on the 3DX client installation it looks like:  
<PRINT\_CLIENT>TARGETHOSTNAME</PRINT\_CLIENT>  
or  
<PRINT\_CLIENT>TARGETHOSTNAME</PRINT\_CLIENT>