



ACI Release 3.12 User Manual

Copyright

© 2012, 2024 T-Systems International GmbH.
All rights reserved. Printed in Germany.

Issued by

T-Systems International GmbH
Business Unit Product Lifecycle Management
Fasanenweg 5
70771 Leinfelden-Echterdingen
Germany

Contacts

web: <http://www.cmi-support.com>
email: cmi_support@t-systems.com
phone: +49 (0) 40 30600-5544

Brief details

User manual for ACI.

This guide describes the usage of ACI.

Before using this guide, be sure you understand:

- the usage of 3DEXPERIENCE,
 - the usage of Aras Innovator.
-

Trademarks

3DEXPERIENCE is a registered trademark of Dassault Systèmes.

Aras and Aras Innovator are registered trademarks of Aras Corporation.

Oracle is a registered trademark of Oracle Corporation.

Names of other products mentioned in this manual are used only for identification purpose and may be trademarks of their companies.

Table of Contents

- 1 Overview..... 1**
- 1.1 Introduction ACI..... 1
- 2 ACI in Aras Innovator 2**
- 2.1 ACI command *Send to 3DEXPERIENCE*..... 3
- 2.2 ACI command *View 3DEXPERIENCE Properties*..... 6
- 2.3 ACI command *Update 3DEXPERIENCE Properties*..... 7
- 2.4 ACI command *Open in 3DEXPERIENCE* 9
- 2.4.1 ACI command *Open in 3DEXPERIENCE Rich Client*..... 9
- 2.4.2 ACI command *Open in 3DEXPERIENCE Dashboard*..... 9
- 2.5 ACI command *3DEXPERIENCE Login*..... 9
- 2.6 ACI command *Query Products in 3DEXPERIENCE* 11
- 2.7 ACI command *3DEXPERIENCE Logout*..... 13
- 2.8 ACI command *Process Status*..... 13
- 2.9 ACI command *About ACI*..... 14
- 3 ACI in 3DEXPERIENCE 16**
- 3.1 ACI command *Aras Login* 17
- 3.2 ACI command *Query Part in Aras*..... 18
- 3.3 ACI command *Get latest version from Aras* 19
- 3.4 ACI command *View Aras Properties*..... 19
- 3.5 ACI command *Aras Logout*..... 20
- 3.6 ACI command *Open related Object in Aras Web Client*..... 20
- 3.7 ACI command *Send to Aras*..... 21
- 3.8 ACI command *Show Process Status* 22
- 3.9 ACI command *About ACI*..... 22
- 4 ACI web interface 24**
- 4.1 About..... 24
- 4.2 Aras..... 25
- 4.2.1 send to 3DEXPERIENCE..... 27
- 4.2.2 update properties in 3DEXPERIENCE..... 28
- 4.2.3 revise in 3DEXPERIENCE 28
- 4.2.4 structure compare..... 29
- 4.3 3DEXPERIENCE..... 30
- 4.3.1 structure compare..... 32
- 4.4 List..... 33
- 4.5 Process..... 34
- 4.6 Monitor..... 37
- 4.7 Tools..... 38
- 4.7.1 Operations 38
- 4.7.2 Persistent..... 40
- 4.7.3 Configuration..... 42
- 4.7.4 Details..... 43
- 4.7.5 File Cache..... 44
- 4.7.6 License 45

List of Figures

Figure 1: ACI menu in Aras Innovator before login in 3DEXPERIENCE	2
Figure 2: ACI command: Send to 3DEXPERIENCE from context menu	3
Figure 3: ACI command: Send to 3DEXPERIENCE from Part details form.....	3
Figure 4: Send to 3DEXPERIENCE dialog in Aras Innovator	4
Figure 5: Send to 3DEXPERIENCE response message	5
Figure 6: ACI command: View 3DEXPERIENCE Properties	6
Figure 7: 3DEXPERIENCE Properties dialog.....	7
Figure 8: ACI command: Update 3DEXPERIENCE Properties	8
Figure 9: ACI command: Update 3DEXPERIENCE Properties Dialog.....	8
Figure 10: ACI command: Open in 3DEXPERIENCE	9
Figure 11: 3DEXPERIENCE Login dialog	10
Figure 12: 3DEXPERIENCE Select Role dialog.....	10
Figure 13: Query Products in 3DEXPERIENCE dialog	11
Figure 14: 3DEXPERIENCE query result dialog.....	12
Figure 15: Information message: 3DEXPERIENCE query limit exceeded.....	12
Figure 16: Send to PDM dialog – Options.....	13
Figure 17: Process Status dialog.....	14
Figure 18: About ACI dialog	15
Figure 19: ACI menu in 3DEXPERIENCE before login in Aras Innovator	16
Figure 20: ACI menu in 3DEXPERIENCE after login in Aras Innovator	16
Figure 21: Aras Login dialog	17
Figure 22: Query Part in Aras dialog.....	18
Figure 23: Query Result from Aras Innovator	18
Figure 24: Send from Aras to 3DEXPERIENCE	18
Figure 25: Send from Aras dialog and response	19
Figure 26: Aras Attributes dialog	20
Figure 27: Send to Aras dialog – Options	22
Figure 28: Process Status dialog.....	22
Figure 29: About ACI dialog	23
Figure 30: ACI Web – Login.....	24
Figure 31: ACI Web.....	25
Figure 32: ACI Web – Aras – Query Part.....	25
Figure 33: ACI Web – Aras – Query result.....	26
Figure 34: ACI Web – Aras – Information about an Aras object	27
Figure 35: ACI Web – Aras – Send to 3DEXPERIENCE options.....	27
Figure 36: ACI Web – Aras – Update in 3DEXPERIENCE.....	28

Figure 37: ACI Web – Aras – Revise in 3DEXPERIENCE 28

Figure 38: ACI Web – Aras – structure compare 29

Figure 39: ACI Web – Aras – Structure compare process status..... 30

Figure 40: ACI Web – Structure Compare graphical result 30

Figure 41: ACI Web – Structure Compare .csv result 30

Figure 42: ACI Web – 3DX – Query result 31

Figure 43: ACI Web – 3DX – Information about a 3DEXPERIENCE object 31

Figure 44: ACI Web – 3DX – Send to Aras options 32

Figure 45: ACI Web – 3DX – Structure compare options 32

Figure 46: ACI Web – Process – Structure Compare Process Status..... 33

Figure 47: ACI Web – List – Aras – List partially validated. 34

Figure 48: ACI Web – Tools – Process – Query result 34

Figure 49: ACI Web – Tools – Process – Query result for complex processes..... 35

Figure 50: ACI Web – Tools – Process – Show queued jobs for a list process. 35

Figure 51: ACI Web – Tools – Process – open log info..... 36

Figure 52: ACI Web – Tools – Process – Log Info dialog..... 36

Figure 53: ACI Web – downloaded ZIP file 36

Figure 54: ACI Web – downloaded CS ZIP file..... 37

Figure 55: ACI Web – Monitor..... 37

Figure 56: ACI Web – Tools – Operations 38

Figure 57: ACI Web – Operations – Query 39

Figure 58: ACI Web – Operations – Query result 39

Figure 59: ACI Web – Operations – Details 40

Figure 60: ACI Web – Operations – Entry Point 40

Figure 61: ACI Web – Persistent directory 41

Figure 62: ACI Web – Persistent directory – Details..... 41

Figure 63: ACI Web – Persistent directory – Entry Point..... 42

Figure 64: ACI Web – Tools – Configuration..... 42

Figure 65: ACI Web – Tools – Configuration: searching configuration values. 43

Figure 66: ACI Web – Details – Query result page 44

Figure 67: ACI Web – File Cache – Query result page 45

Figure 68: ACI Web – License – Details about the license server and allocated licenses 45

1 Overview

1.1 Introduction ACI

ACI was developed by T-Systems as an end-to-end integration between the PDM systems 3DEXPERIENCE and Aras Innovator. With this integration it is possible to exchange CAD and PDM data between 3DEXPERIENCE and Aras Innovator.

3DEXPERIENCE uses assemblies similar to Aras Innovator. ACI makes a bidirectional mapping between the Aras Innovator structure and the 3DEXPERIENCE structure.

2 ACI in Aras Innovator

The ACI functionality is available in the Aras Innovator Client.

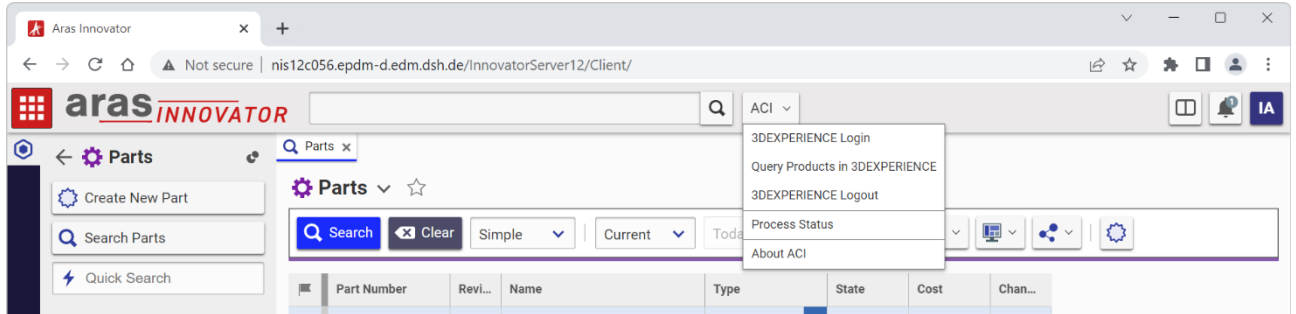


Figure 1: ACI menu in Aras Innovator before login in 3DEXPERIENCE

The commands *Query Products in 3DEXPERIENCE* and *3DEXPERIENCE Logout* are only available, after a successful performed 3DEXPERIENCE login.

The ACI menu contains the following menu items:

- 3DEXPERIENCE Login
- Query Products in 3DEXPERIENCE
- 3DEXPERIENCE Logout
- Process Status
- About ACI

2.1 ACI command *Send to 3DEXPERIENCE*

The command *Send to 3DEXPERIENCE* is available for Parts. The command is available from the context menu on Parts or from the Part details form.

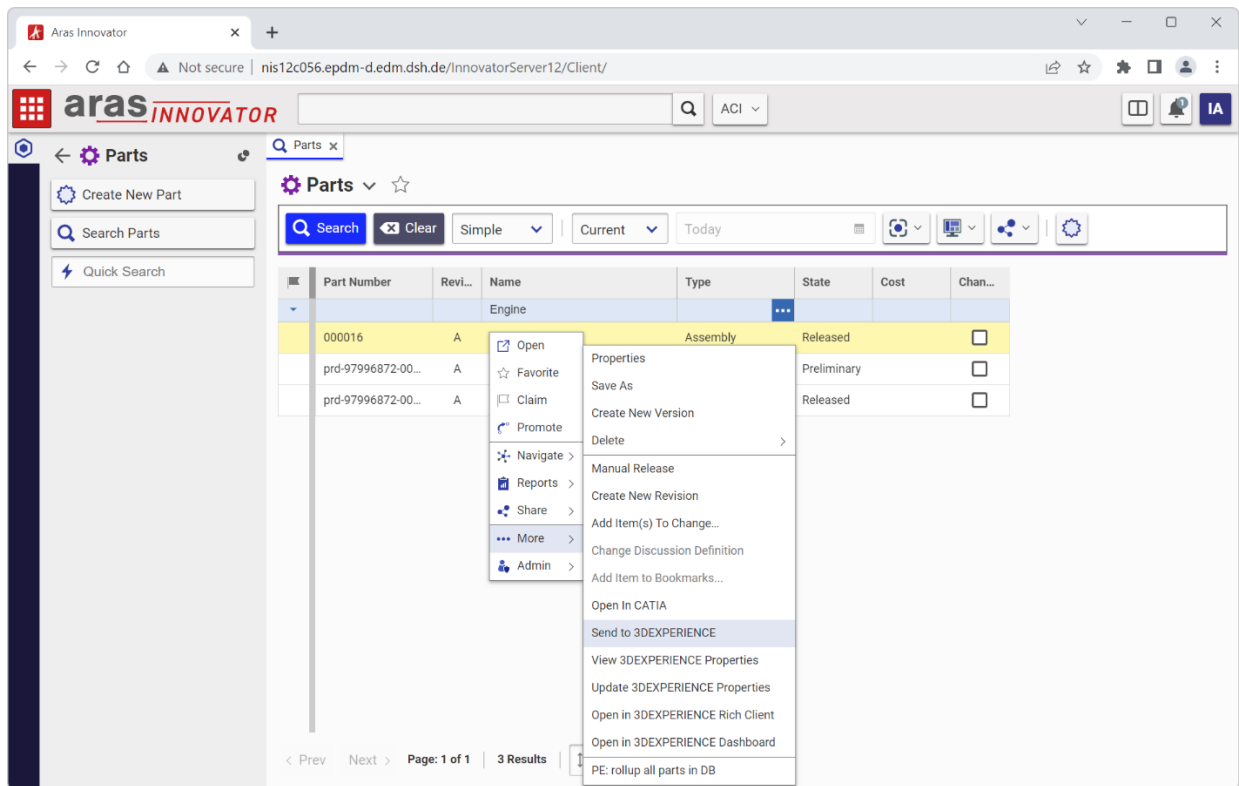


Figure 2: ACI command: *Send to 3DEXPERIENCE* from context menu

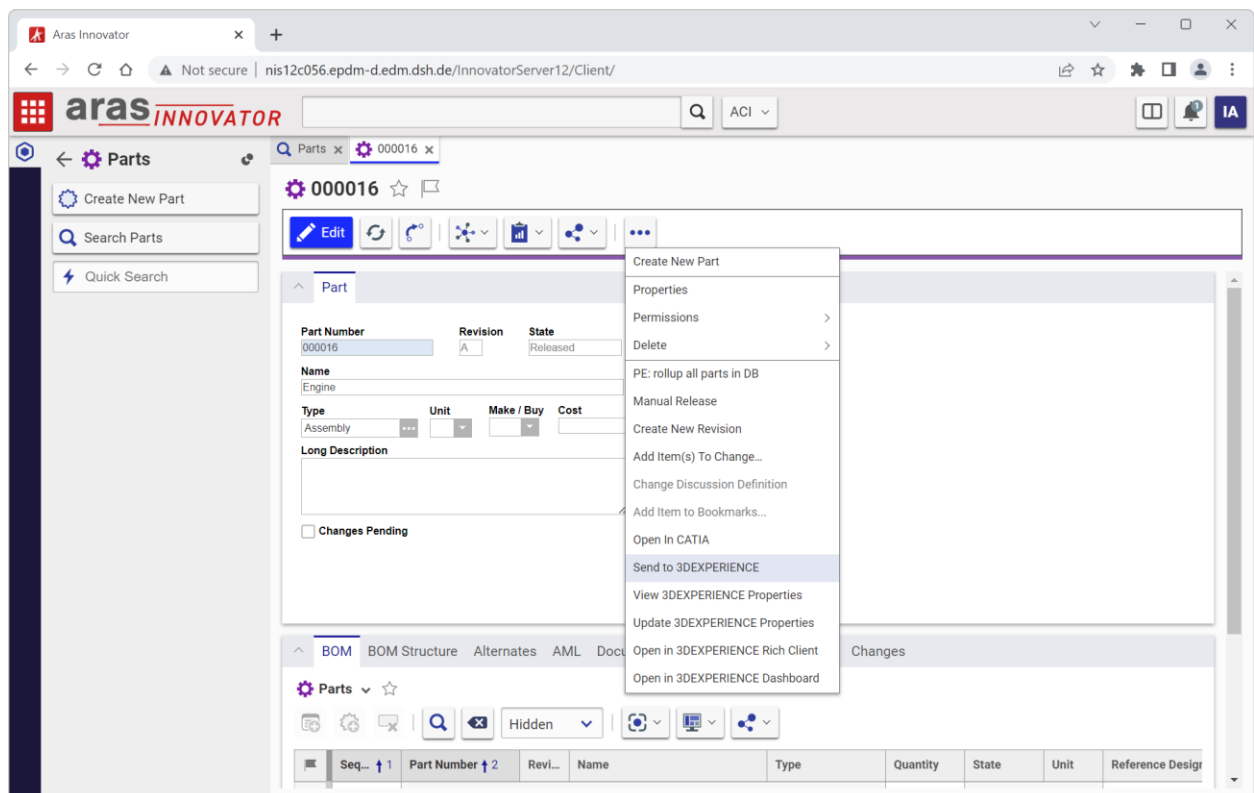


Figure 3: ACI command: *Send to 3DEXPERIENCE* from Part details form

The command will open the Send To 3DEXPERIENCE dialog.

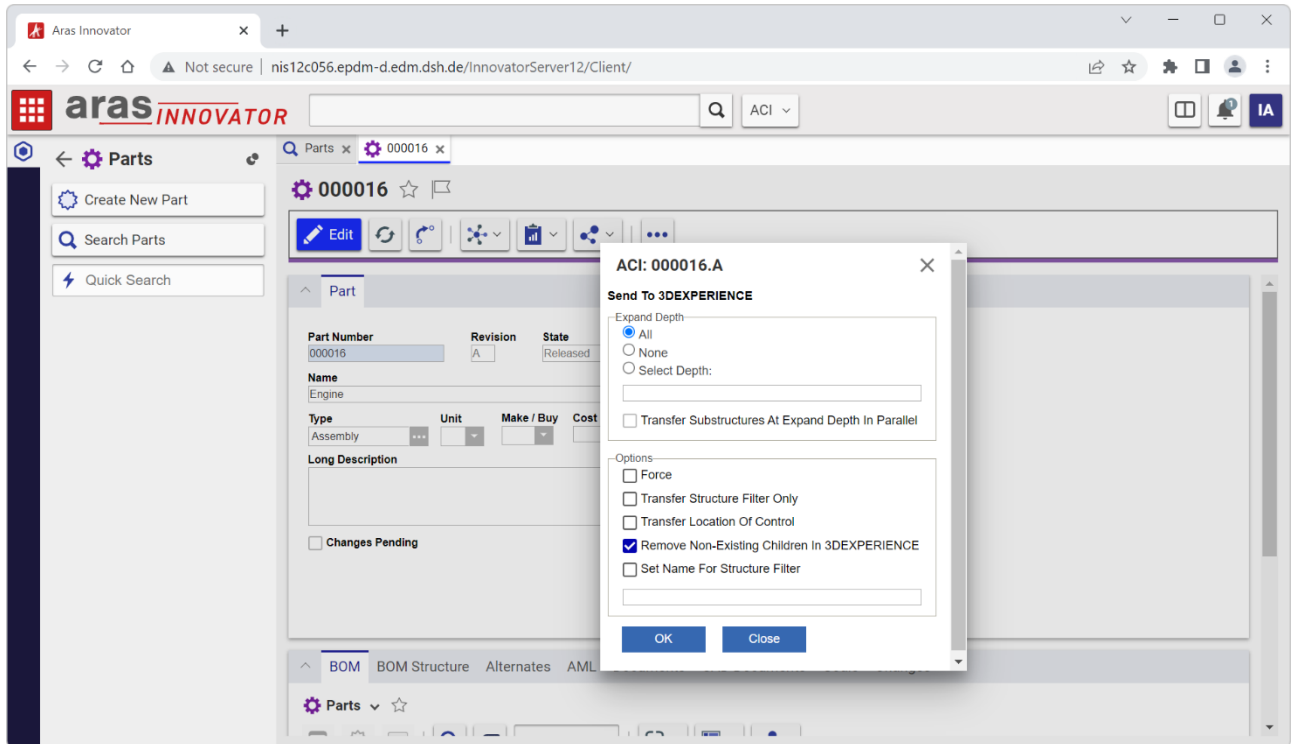


Figure 4: Send to 3DEXPERIENCE dialog in Aras Innovator

In this dialog you have the following options, to configure the ACI export functionality:

- **Expand Depth:**

With these radio buttons you can define the depth of the structure export.

- **“All”**

This is the default configuration. In this case, the whole structure will be exported.

- **“None”**

Only the top structure level will be exported.

- **“Select depth:”**

If you select this configuration, you can define the number of structure levels to be exported.

- **“Transfer Substructures at expand depth in parallel”**

If not activated (default), the Part will be expanded to the specified level and only this part of the structure will be sent. If activated, the Parts at the specified level in the structure will be sent separately and in parallel (constrained by load of ACI server). When processing of those Parts is finished, the top part of the structure will be sent. If transfer of one of the Parts on the expand level fails, and the error cause is fixed without modification of the Part in Aras, this specific Part must be sent with force to update the structure in 3DEXPERIENCE.

- **Options:**

To configure different options for the export, the following checkboxes are available:

- **“Force”**

Exports the structure without skipping or caching.

For example, when the configuration of the export was changed in the settings, but the data itself is not modified, it may be necessary to “Force”.

- “Transfer structure filter only”

With this checkbox, you can transfer only a structure filter to 3DEXPERIENCE without transferring the structure itself. A valid name for the structure filter is necessary and has to be defined in input field *Structure Name*. For further information please see also configuration option *Set name for structure filter*.

- “Transfer location of control”

By activating this checkbox, you can define to transfer the location of control to 3DEXPERIENCE. This means, that all transferred parts are owned by 3DEXPERIENCE after the successful data transfer.

- “Remove non-existing children in 3DEXPERIENCE”

If you activate this checkbox, all non-existing children are removed while performing the data transfer to 3DEXPERIENCE. The structure in Aras Innovator stays unchanged.

- “Set name for structure filter”

If you want to define a filter name for the exported structure, you have to switch on the toggle button *Set name for structure filter* and define a name in the input field.

Defining a filter name for a structure gives you the advantage to transfer the Aras Innovator visibility of structure parts to 3DEXPERIENCE. On Aras Innovator side you have only to define a unique filter name in the *Send to 3DEXPERIENCE* dialog. On 3DEXPERIENCE side you can choose this filter name to filter the transferred structure.

Pressing OK will send the request to the ACI server.

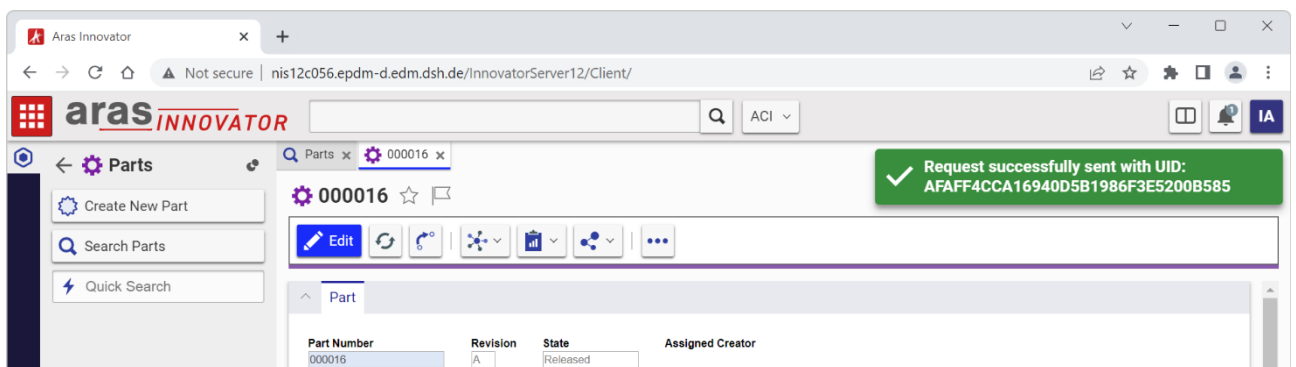


Figure 5: Send to 3DEXPERIENCE response message

2.2 ACI command *View 3DEXPERIENCE Properties*

The command *View 3DEXPERIENCE Properties* is available for Parts. The command is only accessible after a successful login to 3DEXPERIENCE. The command is available from the context menu on Parts or from the Part details form.

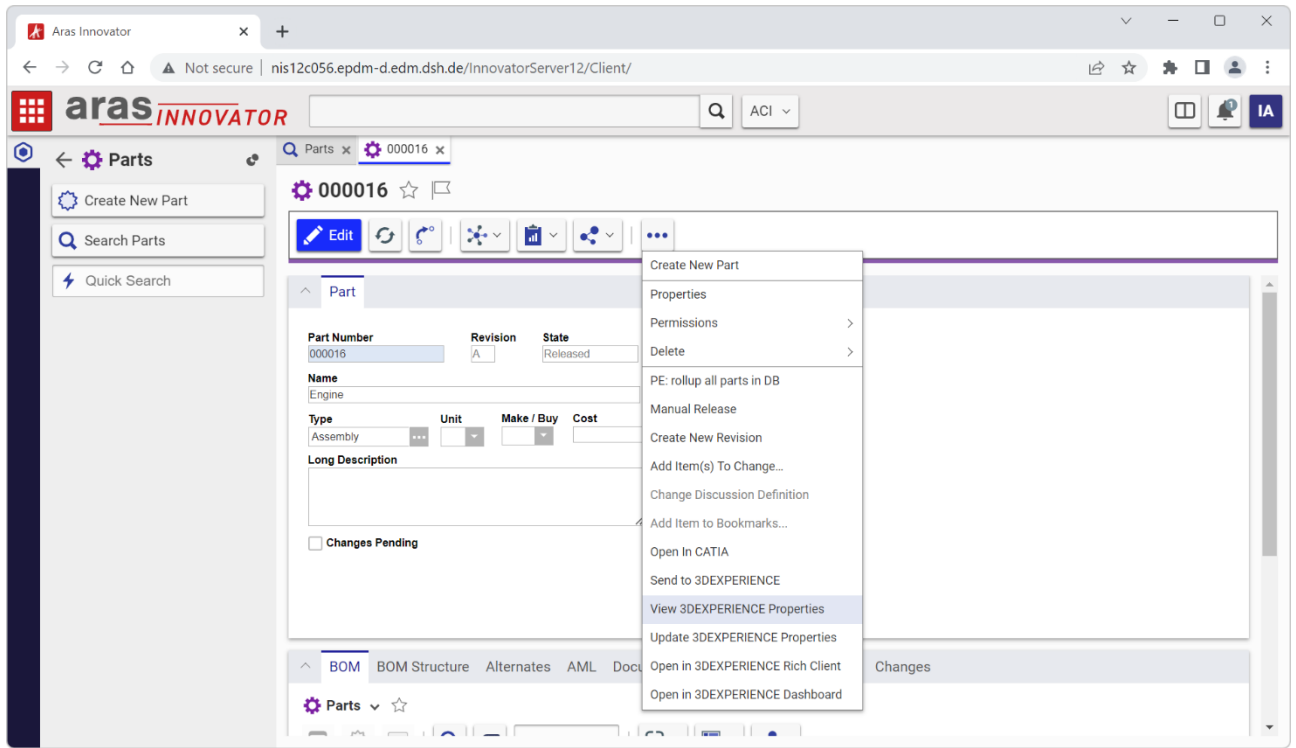


Figure 6: ACI command: View 3DEXPERIENCE Properties

The *View 3DEXPERIENCE Properties* command provides the ability, to display the 3DEXPERIENCE properties of the active Part without leaving the Aras Innovator application or switching to the 3DEXPERIENCE application.

If the 3DEXPERIENCE server connection is configured, the 3DEXPERIENCE properties will be listed in the dialog window.

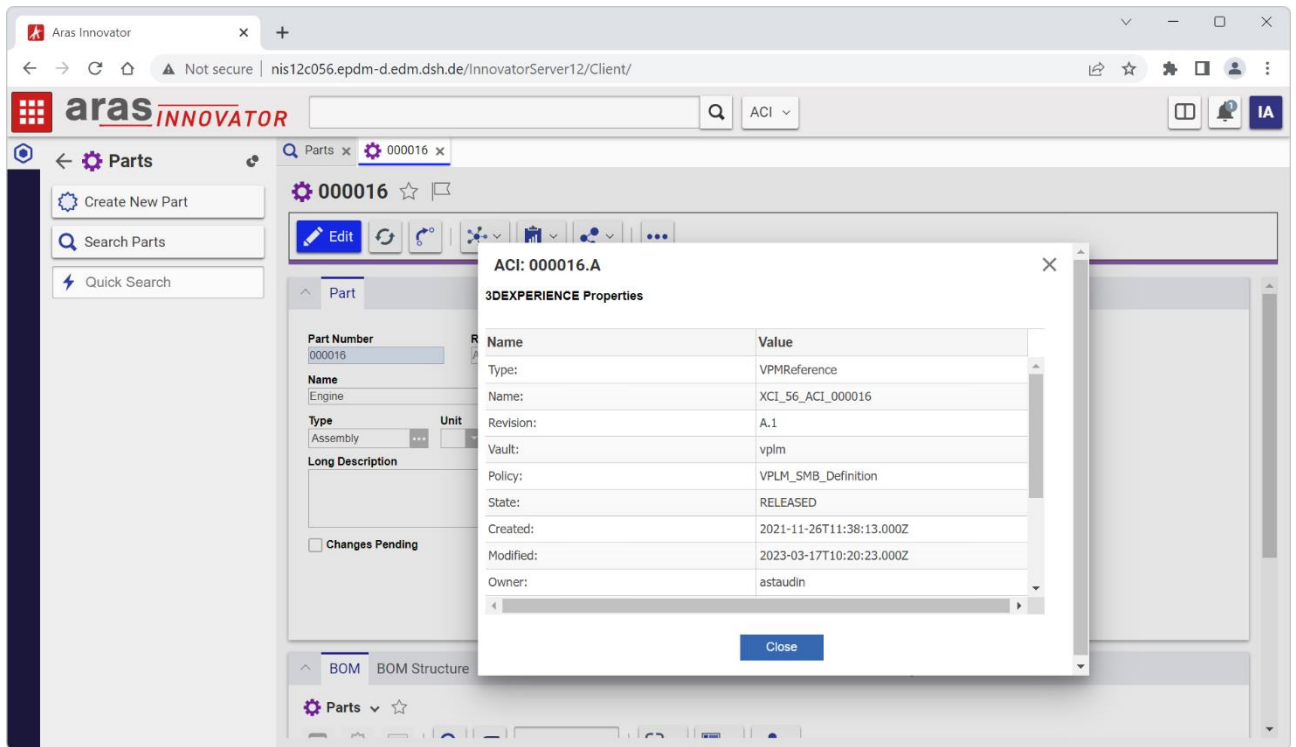


Figure 7: 3DEXPERIENCE Properties dialog

If the 3DEXPERIENCE server connection is not configured, the 3DEXPERIENCE properties from the ACI database will be listed in the dialog window.

2.3 ACI command *Update 3DEXPERIENCE Properties*

The command *Update 3DEXPERIENCE Properties* is available for Parts. The command is available from the context menu on Parts or from the Part details form.

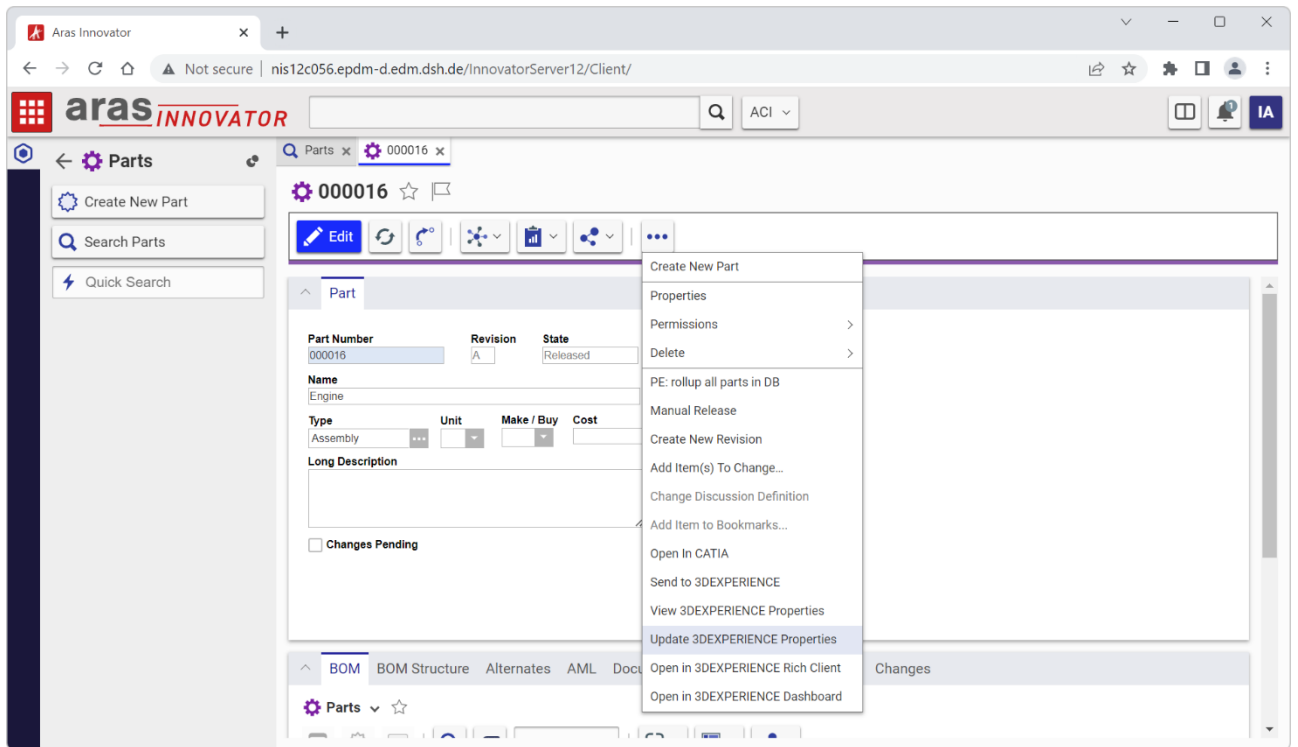


Figure 8: ACI command: Update 3DEXPERIENCE Properties

The *Update 3DEXPERIENCE Properties* command shows the Update 3DEXPERIENCE properties Dialog with the configured Properties from Aras.

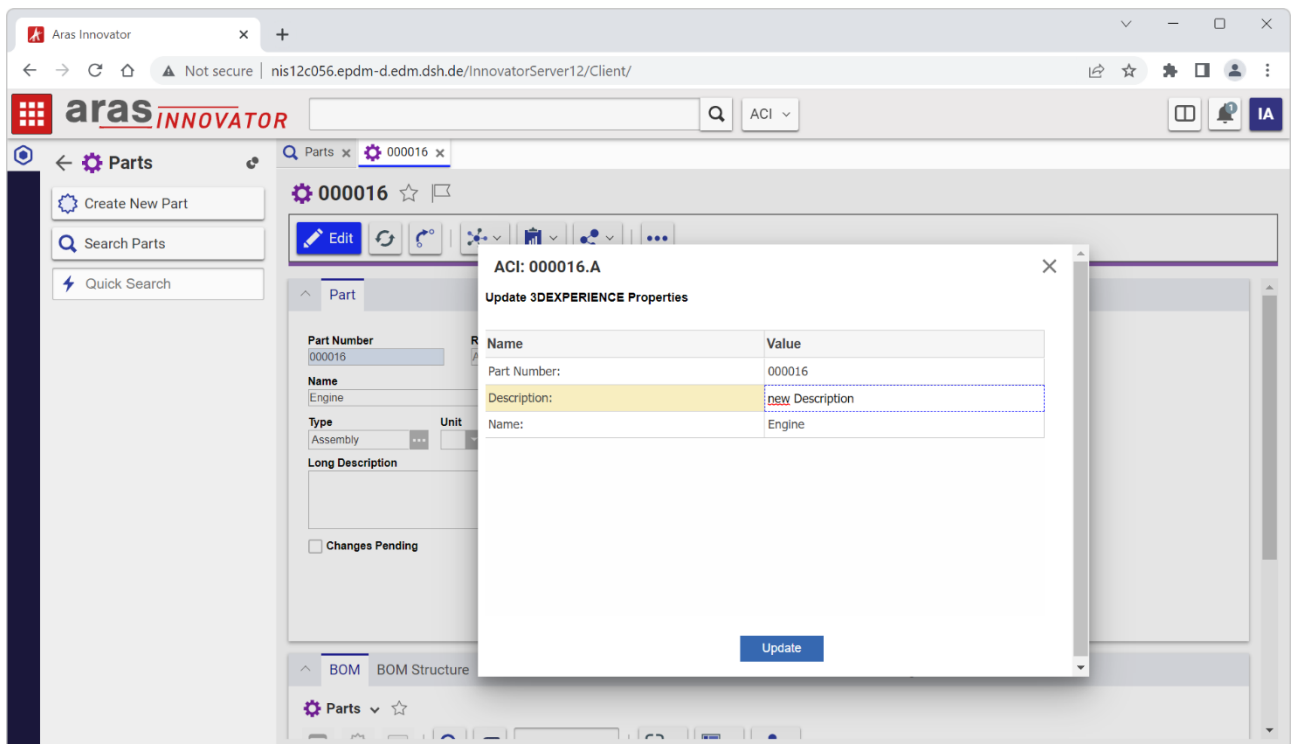


Figure 9: ACI command: Update 3DEXPERIENCE Properties Dialog

2.4 ACI command *Open in 3DEXPERIENCE*

The command *Open in 3DEXPERIENCE Rich Client* and *Open in 3DEXPERIENCE Dashboard* is available for Parts. The commands are available from the context menu on Parts or from the Part details form.

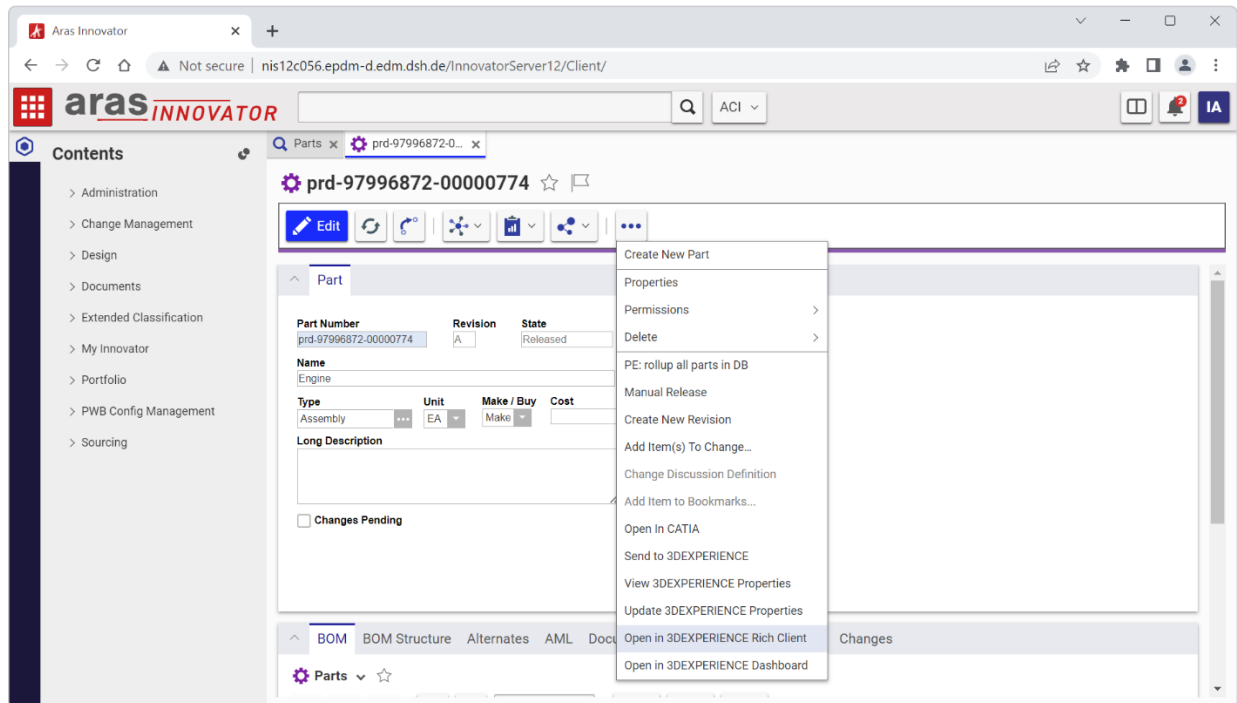


Figure 10: ACI command: Open in 3DEXPERIENCE

2.4.1 ACI command *Open in 3DEXPERIENCE Rich Client*

The command loads the selected Part into an already opened 3DEXPERIENCE session. The session must be started with the ACI 3DEXPERIENCE UI plugin and the Windows Service “ACI Listener Service” must be installed.

2.4.2 ACI command *Open in 3DEXPERIENCE Dashboard*

The command opens the selected Part in the 3DEXPERIENCE Dashboard in the Product Structure Explorer widget. The 3DEXPERIENCE Dashboard URL must be set in the Aras variable `Aci3DXDashboardUrl` by your administrator.

2.5 ACI command *3DEXPERIENCE Login*

The command *3DEXPERIENCE Login* is available inside the ACI toolbar. It is not available in any pop-up menu.

The login to 3DEXPERIENCE is necessary to perform a data query in 3DEXPERIENCE. See ACI command *Query Products in 3DEXPERIENCE* for further information.

If the ACI command *3DEXPERIENCE Login* is selected, a new input dialog window appears to configure the 3DEXPERIENCE login parameters:

- Username

- Password
- Role
- Vault

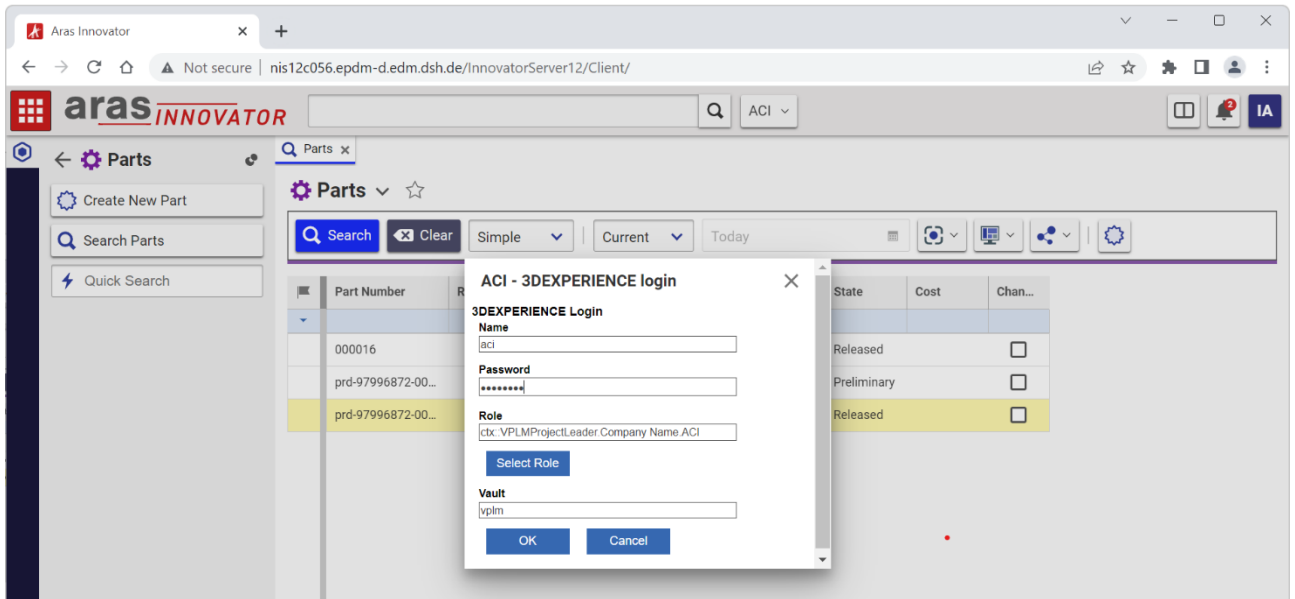


Figure 11: 3DEXPERIENCE Login dialog

The role can be entered manually or selected using the “Select Role” dialog:

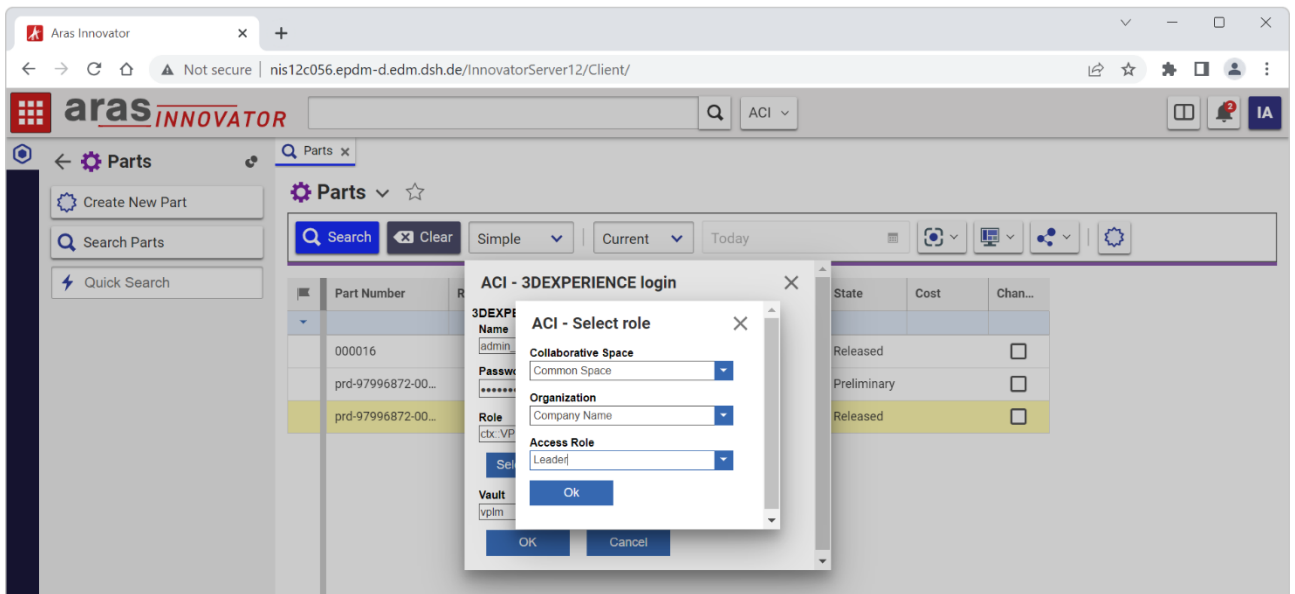


Figure 12: 3DEXPERIENCE Select Role dialog

For performing the 3DEXPERIENCE login, enter your valid 3DEXPERIENCE account data and press the **OK** button.

If the 3DEXPERIENCE login fails, an error message will appear. In this case, please check your 3DEXPERIENCE account data or ask your system administrator for help.

2.6 ACI command *Query Products in 3DEXPERIENCE*

The command *Query Products in 3DEXPERIENCE* is available inside the ACI toolbar. It is not available in any pop-up menu.

If the ACI command *Query Products in 3DEXPERIENCE* is selected, a new input dialog window appears to define the query.

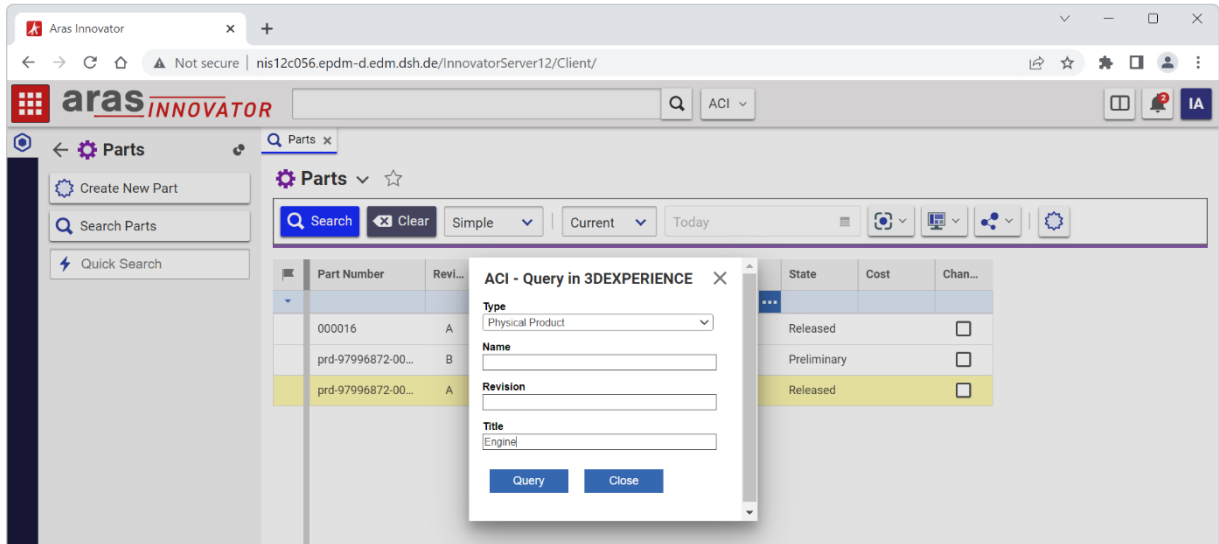


Figure 13: Query Products in 3DEXPERIENCE dialog

The query in 3DEXPERIENCE is a combination of *Type*, *Name*, *Revision* and *Title*.

To define the query parameter *Type*, the user has to select one item of the predefined values list.

Parameter *Name*, *Revision* and *Title* must be a string. The following wildcards are supported:

- Wildcard "*" for a set of characters
- Wildcard "?" for a single character

After the *Query* button is selected, the defined query will be performed in 3DEXPERIENCE and the result will be presented in a new window.

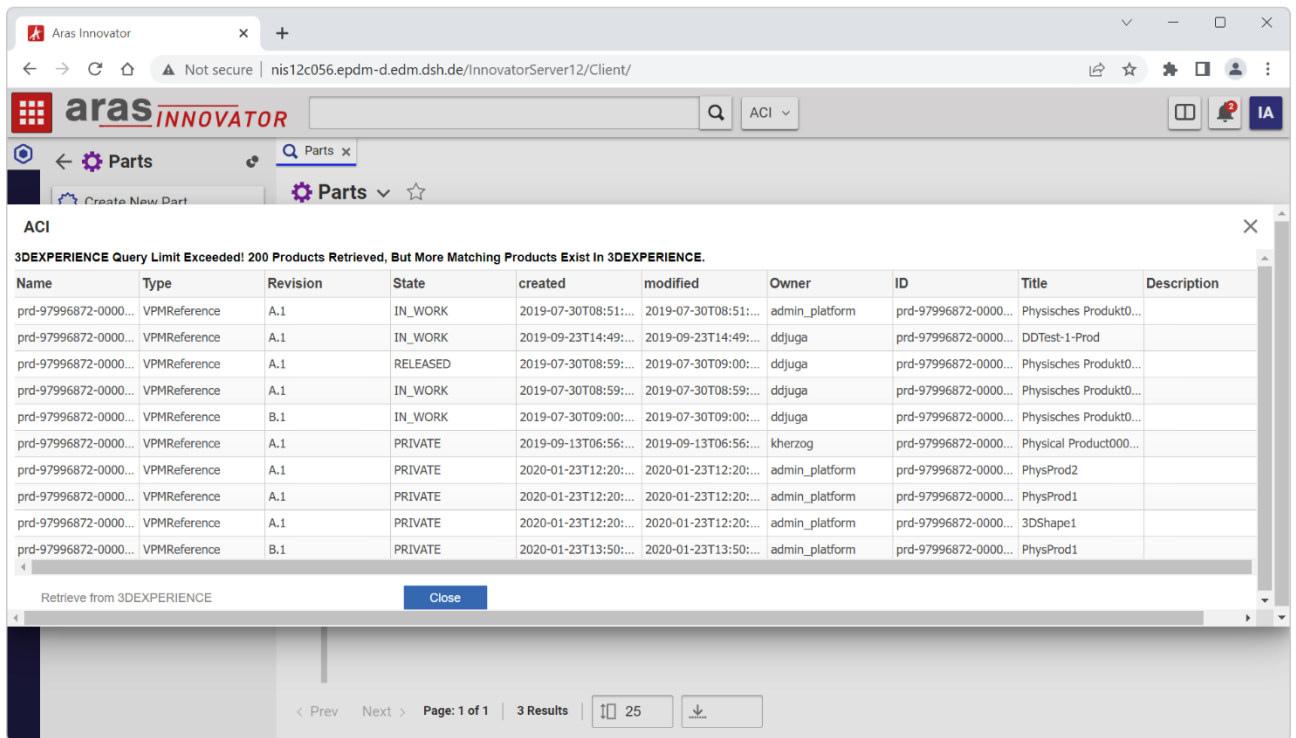


Figure 14: 3DEXPERIENCE query result dialog

Each line represents one 3DEXPERIENCE product. In the top area of the dialog window, the number of query results is presented.

To avoid heavy load of 3DEXPERIENCE, the maximum number of query results is limited. If more matching objects are available in 3DEXPERIENCE, an information message will appear:

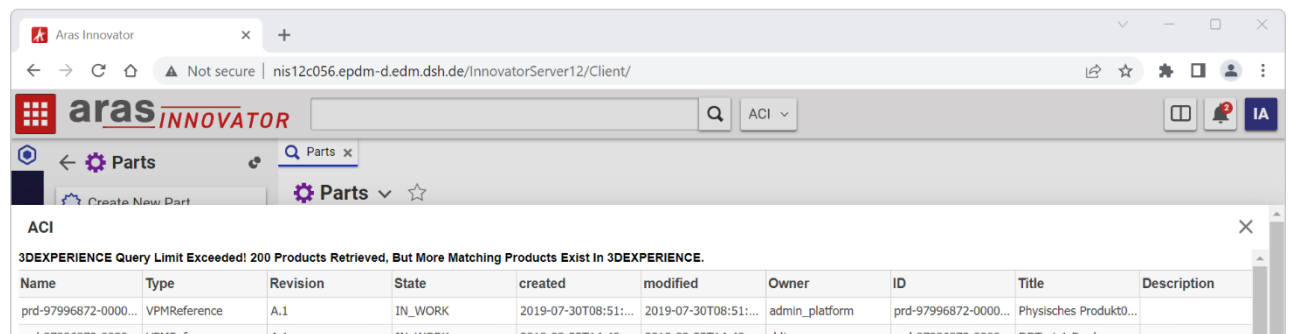


Figure 15: Information message: 3DEXPERIENCE query limit exceeded

Sorting of the query results is possible. By selecting a column header, all results will be sorted ascending or descending.

Reordering of attributes (table columns) by moving a column is also possible.

If one product (one query result line) is selected, the transfer button *Send from 3DEXPERIENCE* is selectable. After selecting the button, the transfer from 3DEXPERIENCE to Aras Innovator will be initiated for the selected product.

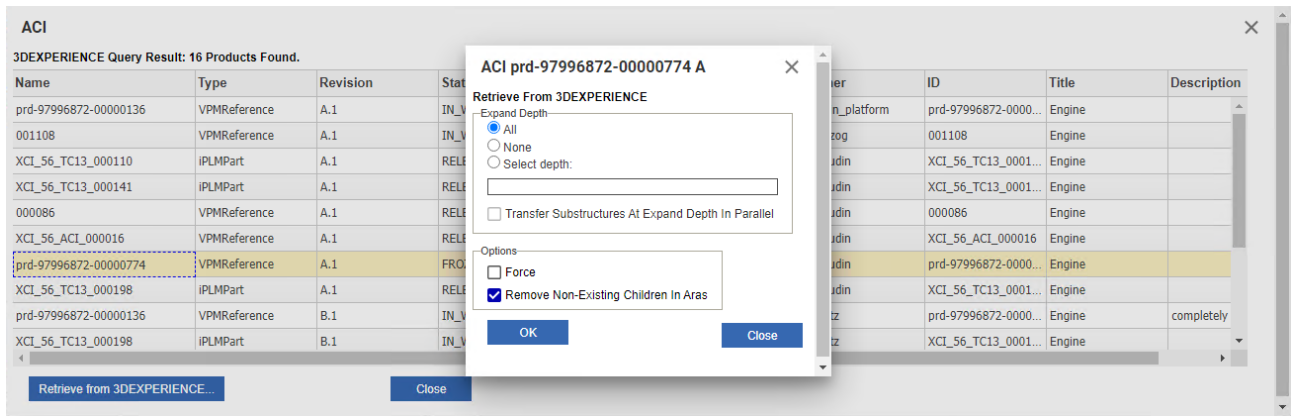


Figure 16: Send to PDM dialog – Options

The send options are displayed in a Dialog. The transfer can be started with the OK button and the user will get a confirmation message. For transfer option details please refer to *chapter 3.7 ACI command Send to Aras*.

The data transfer itself will be performed as background job. You can resume your work in Aras Innovator after closing the confirmation message window.

2.7 ACI command *3DEXPERIENCE Logout*

The command *3DEXPERIENCE Logout* is available inside the ACI. It is not available in any pop-up menu.

If you select the ACI command *3DEXPERIENCE Logout* the logout will be performed. To perform a 3DEXPERIENCE query, you have to login again.

2.8 ACI command *Process Status*

The command *Process Status* is available inside the ACI. It is not available in any pop-up menu.

The command *Process Status* will display the *Process Status* dialog with ACI process information.

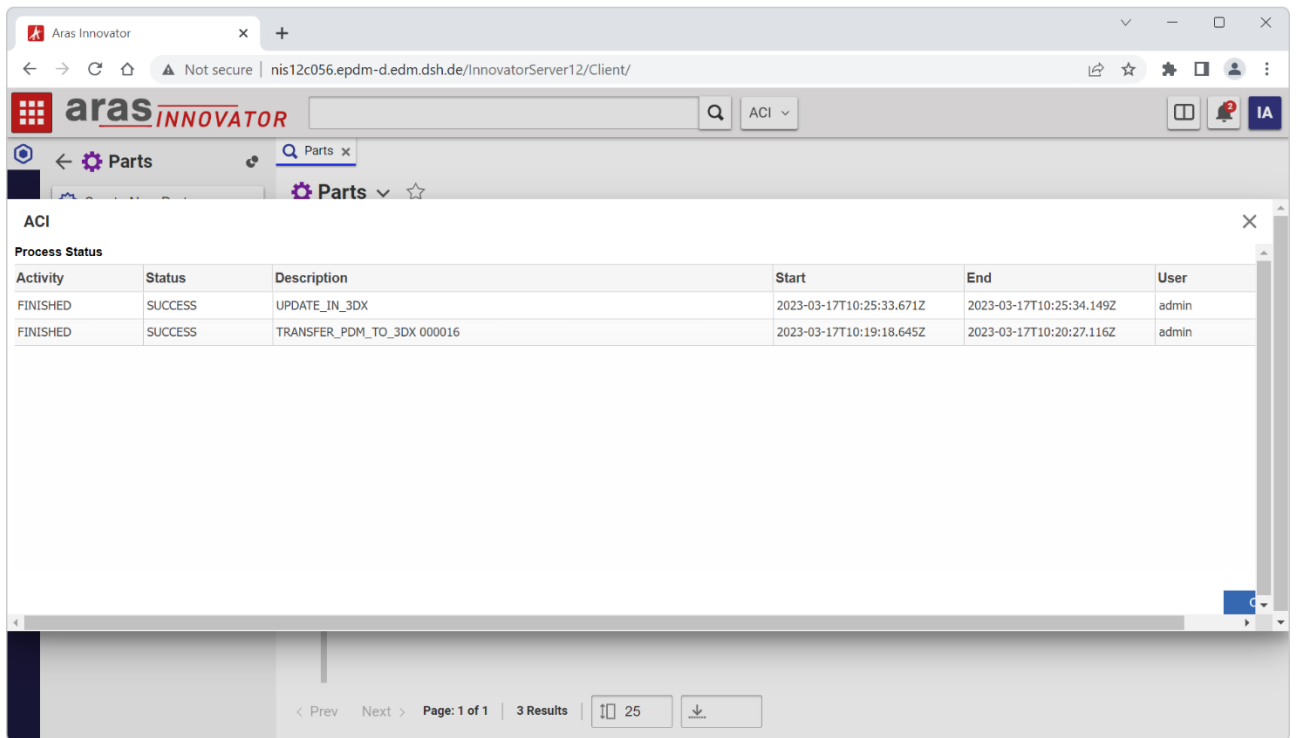


Figure 17: Process Status dialog

The Process Status information shows the process information Activity, Status, Description, Start and End Time and the client user who started the process. If a Process status is FAILED the fail message is displayed at the bottom of the dialog.

2.9 ACI command *About ACI*

The command *About ACI* is only available inside the ACI menu and will display some general product information.

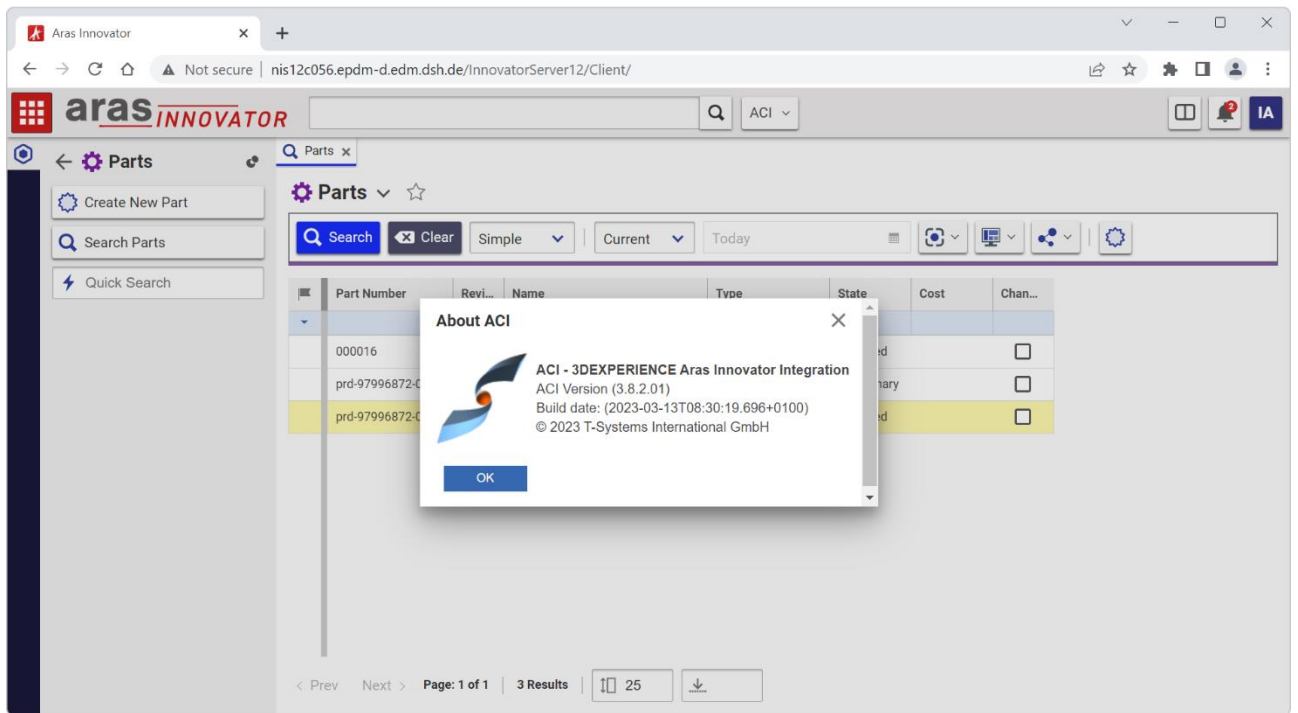


Figure 18: About ACI dialog

3 ACI in 3DEXPERIENCE

The ACI functionality is seamlessly embedded into 3DEXPERIENCE. You can find the ACI menu in the fixed area of the 3DEXPERIENCE Action Bar with common tools that are not app-specific. The ACI menu is available in Explore Mode and in Open Mode of 3DEXPERIENCE.

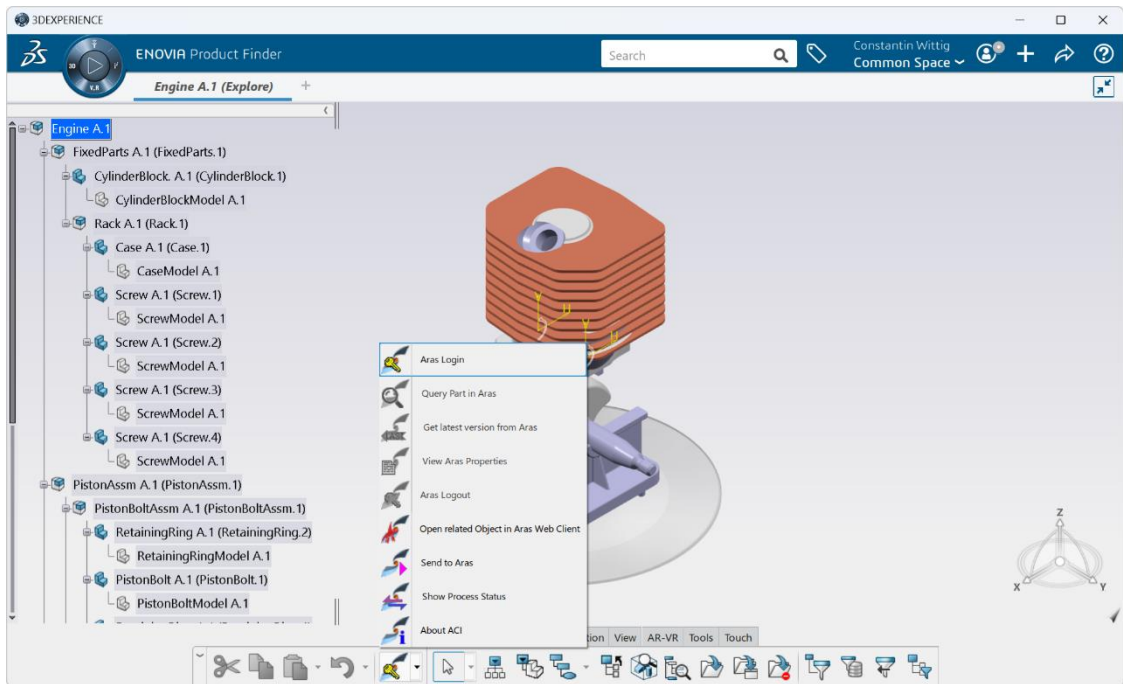


Figure 19: ACI menu in 3DEXPERIENCE before login in Aras Innovator

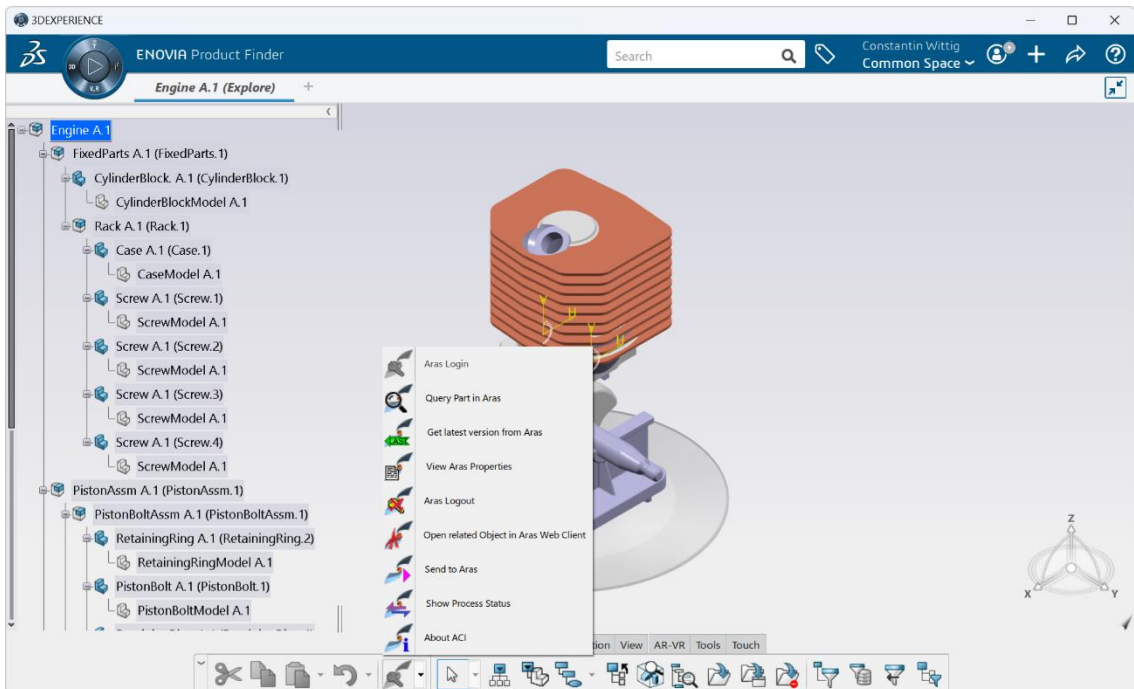











Figure 20: ACI menu in 3DEXPERIENCE after login in Aras Innovator

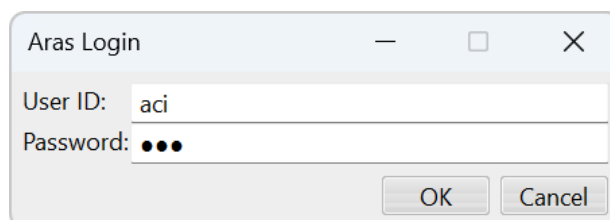
The following commands are available inside the ACI menu:

-  Aras Login
-  Query Part in Aras
-  Get latest version from Aras
-  View Aras Properties
-  Aras Logout
-  Open related Object in Aras Web Client
-  Send to Aras
-  Show Process Status
-  About ACI

3.1 ACI command *Aras Login*

ACI menu icon: 

An Aras Innovator Login is required to use the functionality of the ACI commands *Query Part in Aras*, *Get latest version from Aras* and *View Aras Properties* of selected item. After selecting the icon *Aras Login* the following dialog window appears:



The image shows a dialog window titled "Aras Login". It has a standard Windows-style title bar with minimize, maximize, and close buttons. The dialog contains two input fields: "User ID:" with the text "aci" entered, and "Password:" with three black dots representing a masked password. At the bottom right of the dialog, there are two buttons: "OK" and "Cancel".

Figure 21: Aras Login dialog

For performing the Aras Login, enter your valid Aras Innovator account data and press the *OK* button.

If the Aras Innovator login is successful, the ACI commands *Query Part in Aras*, *Get latest version from Aras* and *View Aras Properties* are selectable.

If the Aras Innovator login fails, the error message "Login failed" will appear. In this case, please check your Aras Innovator account data or ask your ACI system administrator for help.

3.2 ACI command *Query Part in Aras*



ACI menu icon:

This dialog offers the possibility to define and execute different types of part queries inside Aras Innovator without leaving your active 3DEXPERIENCE window. It is only available, when an Aras Innovator session is active.

After selecting the ACI command *Query Part in Aras* the following dialog window will appear:

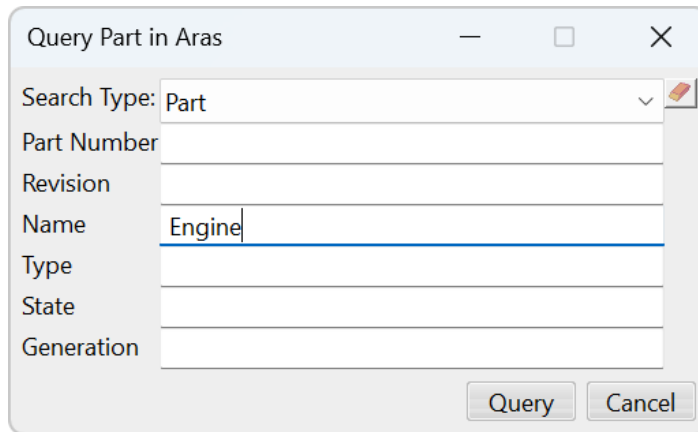


Figure 22: Query Part in Aras dialog

The query can be a combination of Type, Part Number, Revision, Name, Type, and State.

After selecting the *Query* button, the query will be performed inside Aras Innovator and the result will be presented in a new window. In case of no result data, an empty result window will appear.

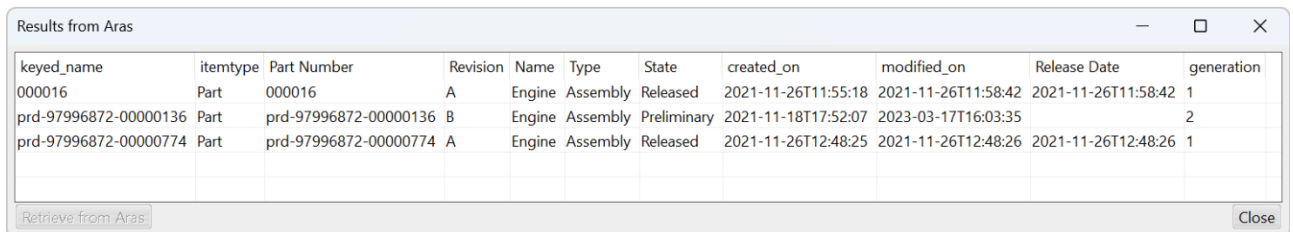


Figure 23: Query Result from Aras Innovator

Inside the result list it is possible to select one object. After selecting an object, the button *Retrieve from Aras* will become active.

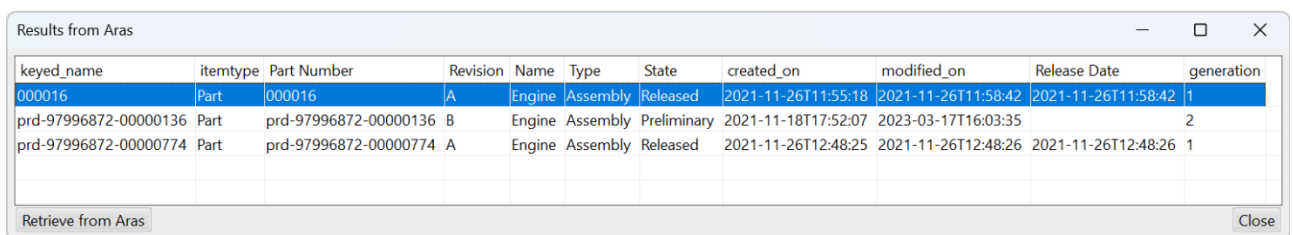


Figure 24: Send from Aras to 3DEXPERIENCE

By selecting this button, you are able to start the data transfer from Aras Innovator to 3DEXPERIENCE for the selected object. To start the transfer, check the options inside the upcoming dialog window and press the *OK* button.

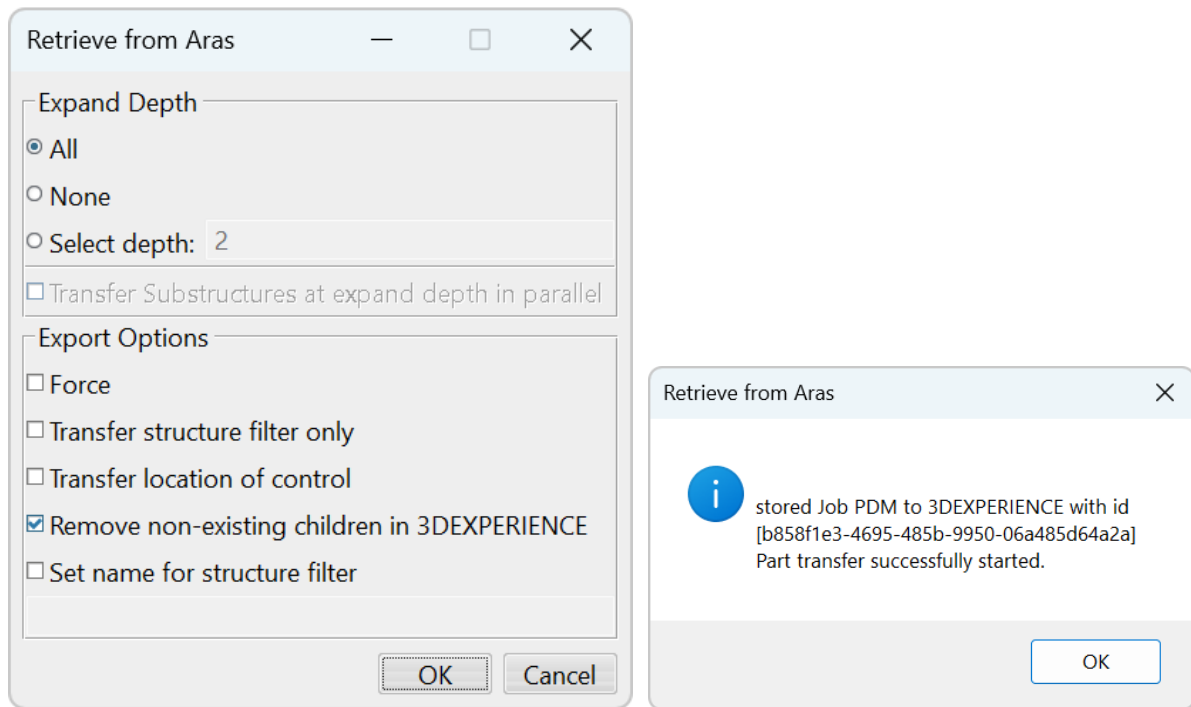


Figure 25: Send from Aras dialog and response

For details, please refer to *chapter 2.1 ACI command Send to 3DEXPERIENCE*.

The data transfer is performed as background job and will take some time according to the utilization of the Aras Innovator and 3DEXPERIENCE server processes.

In case of “Expand Depth” defined as “All”, please keep in mind that the entire structure below the selected object, including all children, is transferred from Aras Innovator to 3DEXPERIENCE.

3.3 ACI command *Get latest version from Aras*



ACI menu icon:

With the command *Get latest version from Aras* you can start an update process to transfer the latest version of the selected object from Aras Innovator to 3DEXPERIENCE. The versions of the entire structure below the selected object, including all children, will be checked. The latest version of each object will be transferred to 3DEXPERIENCE.

The data transfer is performed as background job and will take some time according to the utilization of the Aras Innovator and 3DEXPERIENCE server processes.

This command is only available when an Aras Innovator session is active.

3.4 ACI command *View Aras Properties*



ACI menu icon:

To retrieve the attribute values for a selected object, you can use the command *View Aras Properties*. Activate an object in 3DEXPERIENCE and select the command. An online query will be started immediately and the available Aras Innovator attributes and values will be displayed in a new window.

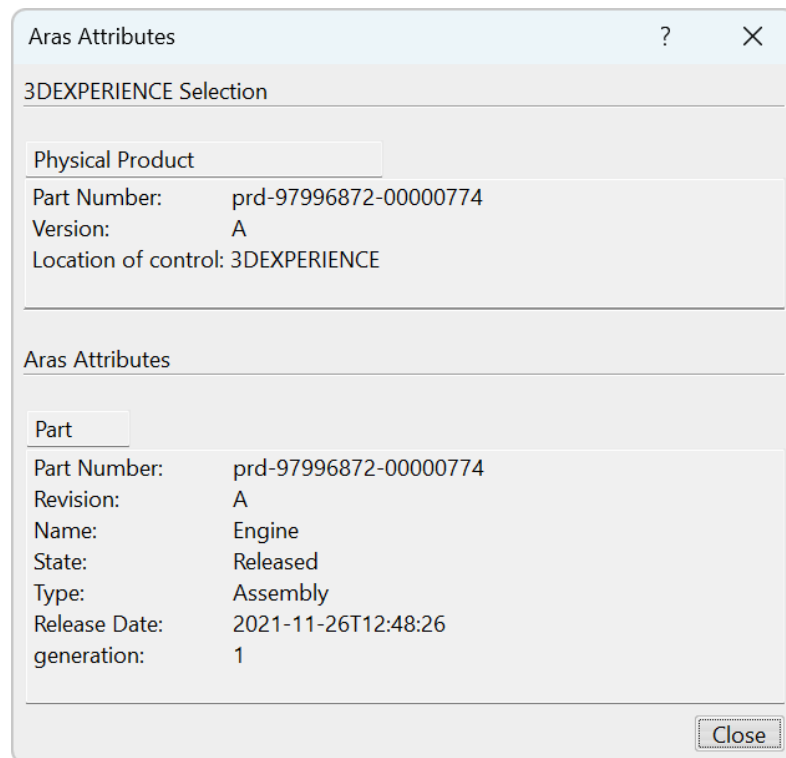



Figure 26: Aras Attributes dialog

If the selected object in 3DEXPERIENCE does not exist in Aras Innovator, an appropriate error message is displayed. Please note, only object type Product is supported.


This command is only available when an Aras Innovator session is active.

3.5 ACI command *Aras Logout*

ACI menu icon: 

If you select the command *Aras Logout* the logout will be performed. To perform one of the before described commands, you have to login again.

3.6 ACI command *Open related Object in Aras Web Client*

ACI menu icon: 

If you select the command *Open related Object in Aras Web Client*, the selected object is opened in the Aras Innovator Web Client.

3.7 ACI command *Send to Aras*

ACI menu icon: 

The command *Send to Aras* can be used to start a data transfer of a product structure node selected in 3DEXPERIENCE to Aras Innovator. If no product structure node is selected the root node is used for the transfer. If more than one product structure node is selected, a warning message will be displayed.

In this dialog you have the following options, to configure the ACI export functionality:

- Expand Depth:

With these radio buttons you can define the depth of the structure export.

- “All”

This is the default configuration. In this case, the whole structure will be exported.

- “None”

Only the top structure level will be exported.

- “Select depth:”

If you select this configuration, you can define the number of structure levels to be exported (Default number is: 2).

- “Transfer Substructures at expand depth in parallel”

If not activated (default), the Physical Product will be expanded to the specified level and only the expanded part of the structure will be sent. If activated, the Physical Product at the specified level in the structure will be sent separately and in parallel (constrained by load of ACI server). When processing of those Physical Products is finished, the top part of the structure will be sent. If transfer of one of the Physical Product on the expand level fails, and the error cause is fixed without modification of the Physical Product in 3DEXPERIENCE, this specific Physical Product must be sent with force to update the structure in Aras.

- Export Options:

To configure different options for the export, the following checkboxes are available:

- “Force”

If you activate this checkbox, the object import to Aras Innovator will be forced even it is already imported.

For example, when the configuration of the import was changed in the settings, but the data itself is not modified, it may be necessary to “Force”.

- “Remove non existing children in PDM”

If you activate this checkbox, all non-existing children are removed while performing the data transfer to Aras Innovator. The structure in 3DEXPERIENCE stays unchanged.

- “Save selected component before send to Aras”

If you activate this checkbox, the component will be saved before the transfer is started.

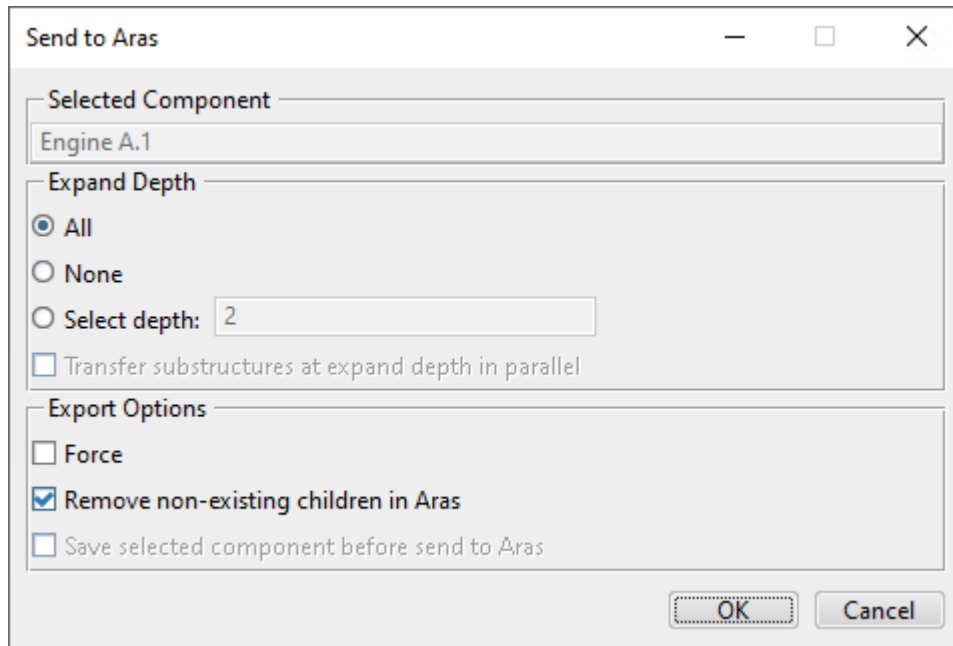


Figure 27: Send to Aras dialog – Options

When you click the *OK* button, the selected structure will be exported from 3DEXPERIENCE and imported into Aras Innovator. The Mastership of the authoring system will not be changed. That means only product structure nodes that are mastered by 3DEXPERIENCE will be updated or created in Aras Innovator eventually.

3.8 ACI command *Show Process Status*



ACI menu icon:

The command *Show Process Status* shows the Process Status dialog with the current Process Status information. If the Status is *FAILED*, the failed message is displayed at the bottom of the dialog.

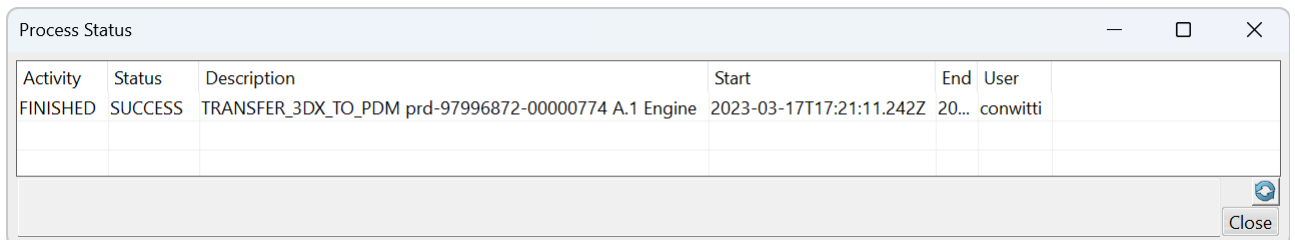


Figure 28: Process Status dialog

3.9 ACI command *About ACI*



ACI menu icon:

The command *About ACI* displays some general product information.

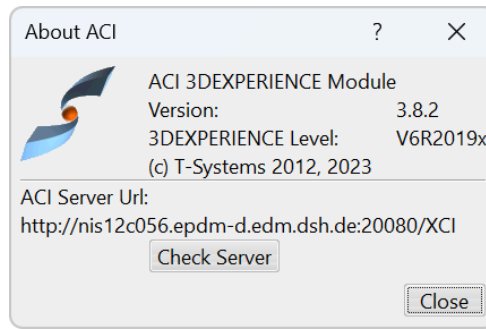


Figure 29: About ACI dialog

4 ACI web interface

The ACI Web provides some export functionality and information. You can retrieve this information with a standard web browser at the URL `http://my.aci-integration-server.url:port/XCI`.

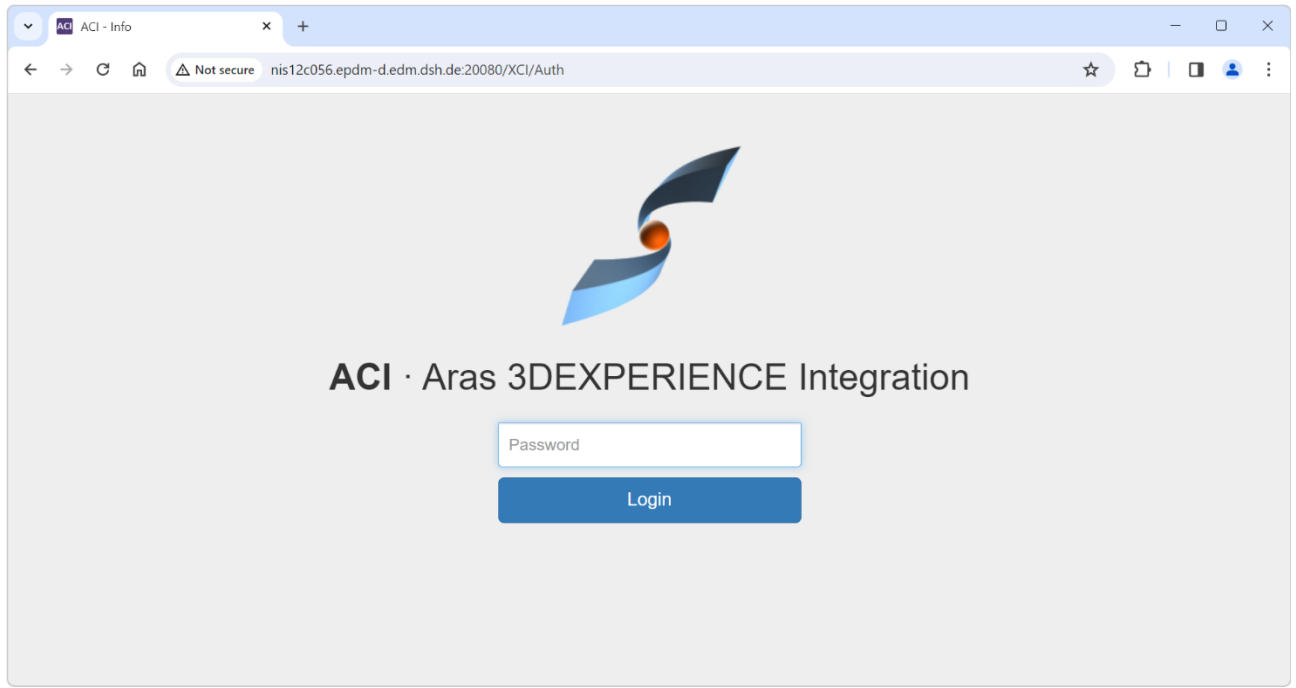


Figure 30: ACI Web – Login

4.1 About

On the *About* page you can find information about the ACI software version, XCI_HOME, and the setting path.

The Aras version link will provide more information about the Aras Innovator Server.

The 3DEXPERIENCE version link will provide more information about the 3DEXPERIENCE server.

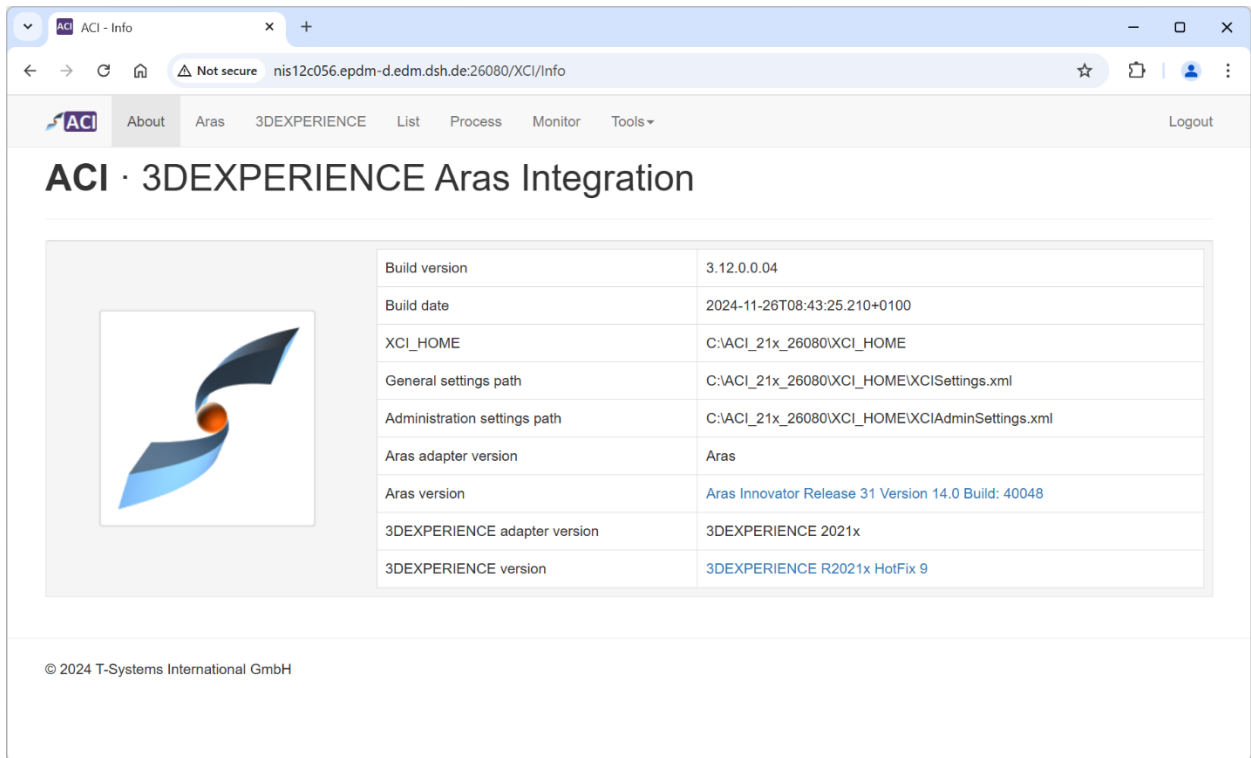


Figure 31: ACI Web

4.2 Aras

On the *Aras* page you can query for Aras Innovator Parts.

In the query criteria fields you can use wildcards. Click on the *find* button to start the query.

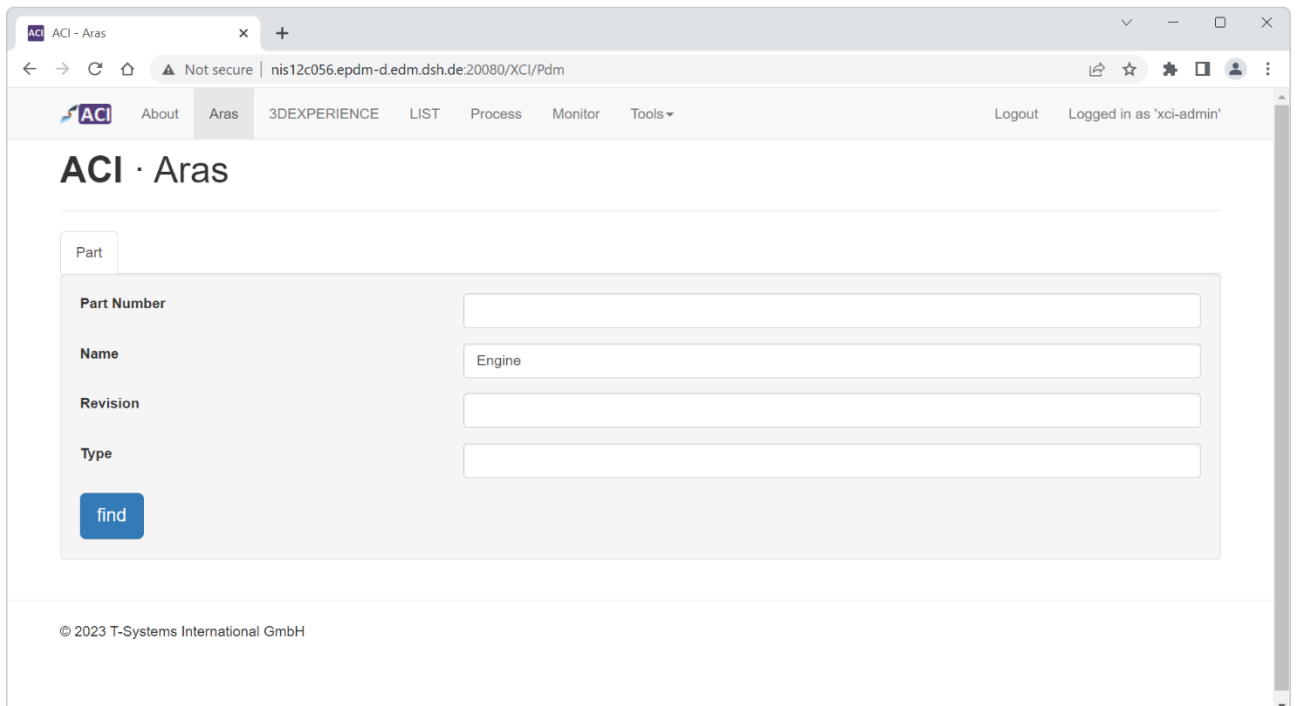


Figure 32: ACI Web – Aras – Query Part

The query result will be displayed in the table below. When you click on the display name of the object the object will be shown on a new page.

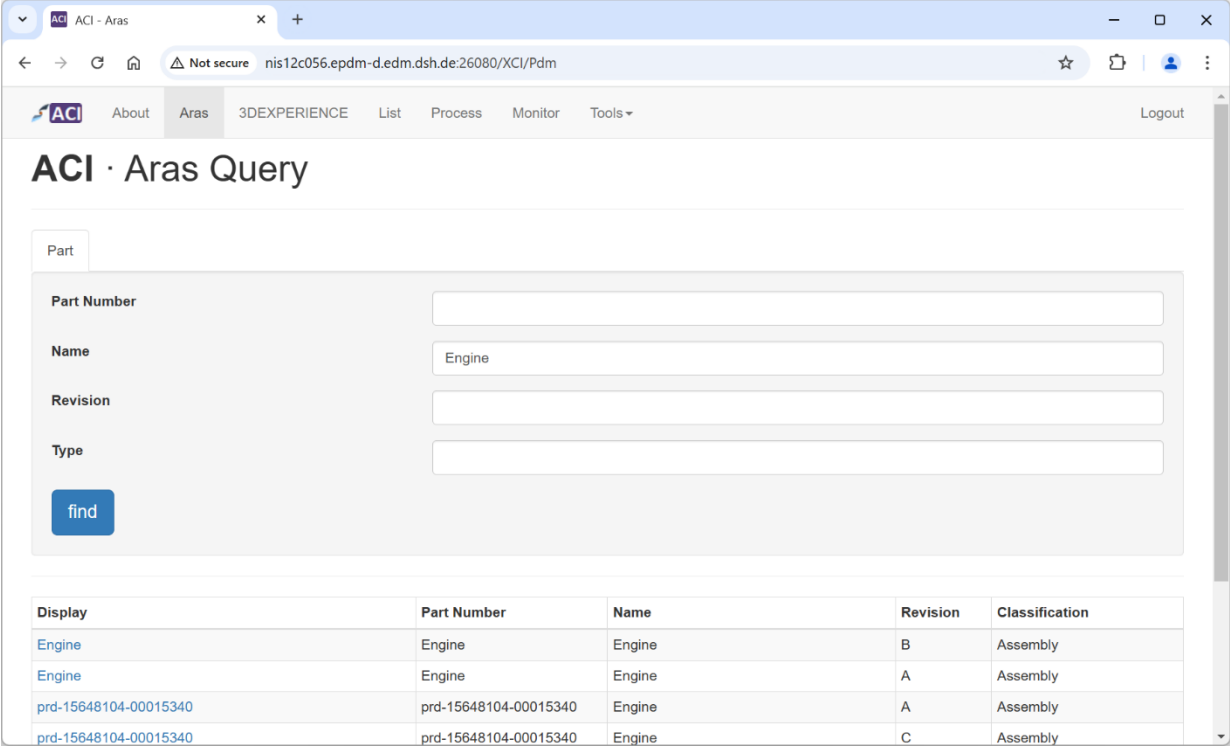


Figure 33: ACI Web – Aras – Query result

When opening a result from the query, information about that object are displayed:

- structure tree to expand the structure below the selected object in Aras
- Aras properties of the selected object
- commands, for example transfer to 3DEXPERIENCE or structure comparison with 3DEXPERIENCE

Some commands need to be activated by your administrator to be accessible.

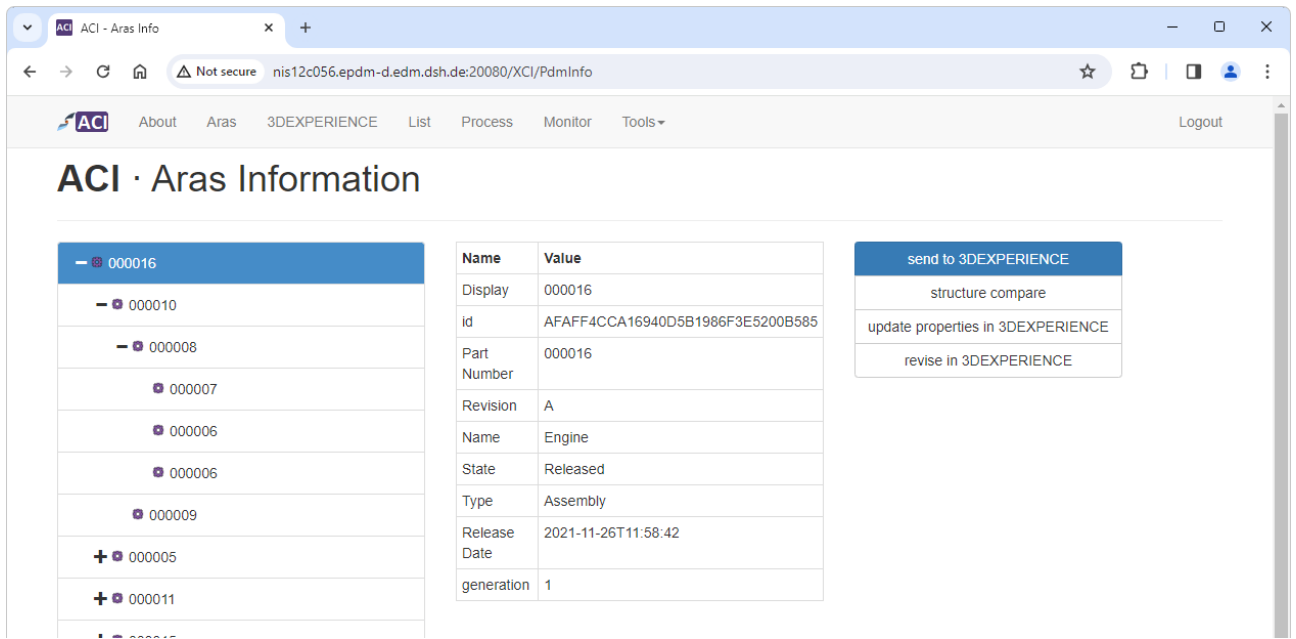


Figure 34: ACI Web – Aras – Information about an Aras object

4.2.1 send to 3DEXPERIENCE

In this dialog you have some options, to configure the *Send to 3DEXPERIENCE* functionality. For details, please refer to *chapter 2.1 ACI command Send to 3DEXPERIENCE*.

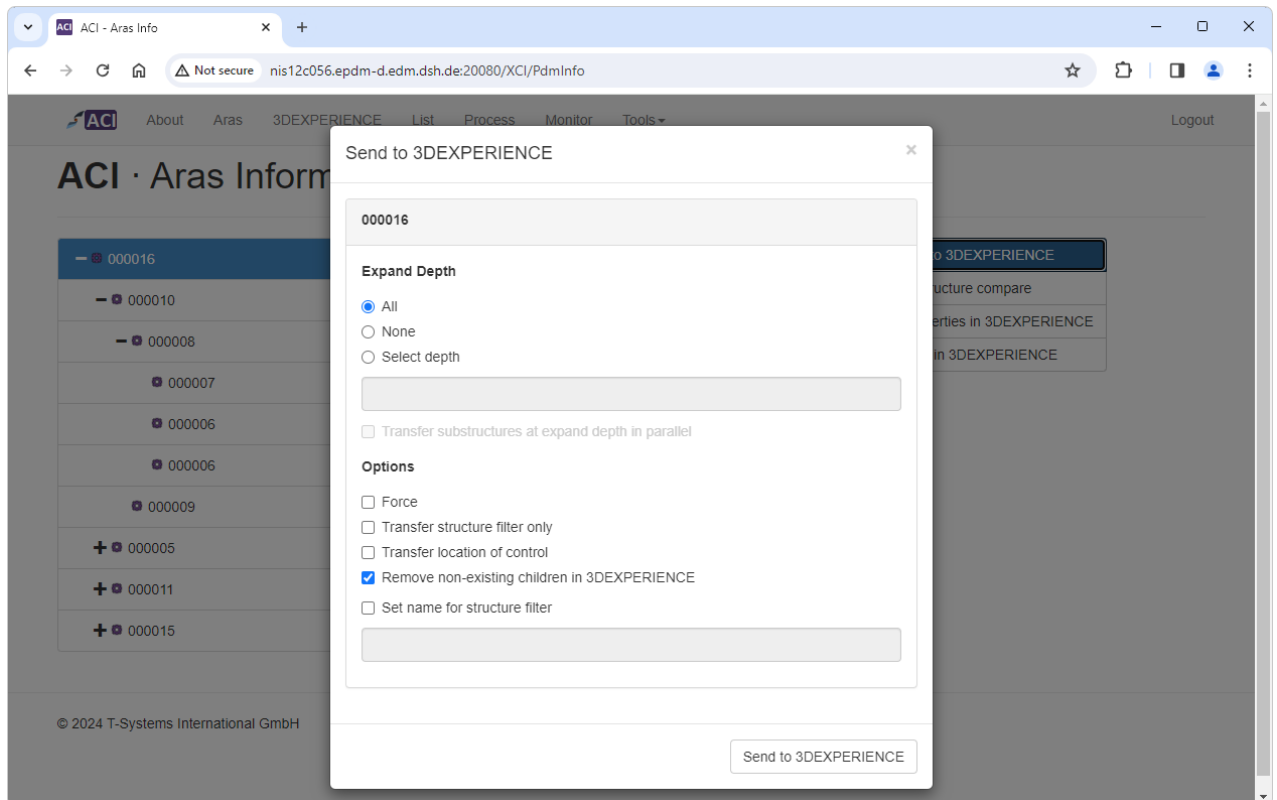


Figure 35: ACI Web – Aras – Send to 3DEXPERIENCE options

4.2.2 update properties in 3DEXPERIENCE

update in 3DEXPERIENCE synchronizes current Aras properties on the object to properties in 3DEXPERIENCE. The property mapping is configured in the XCISettings.xml. The Update is started with the *Update in 3DEXPERIENCE* button.

This command needs to be enabled by your administrator to be accessible.

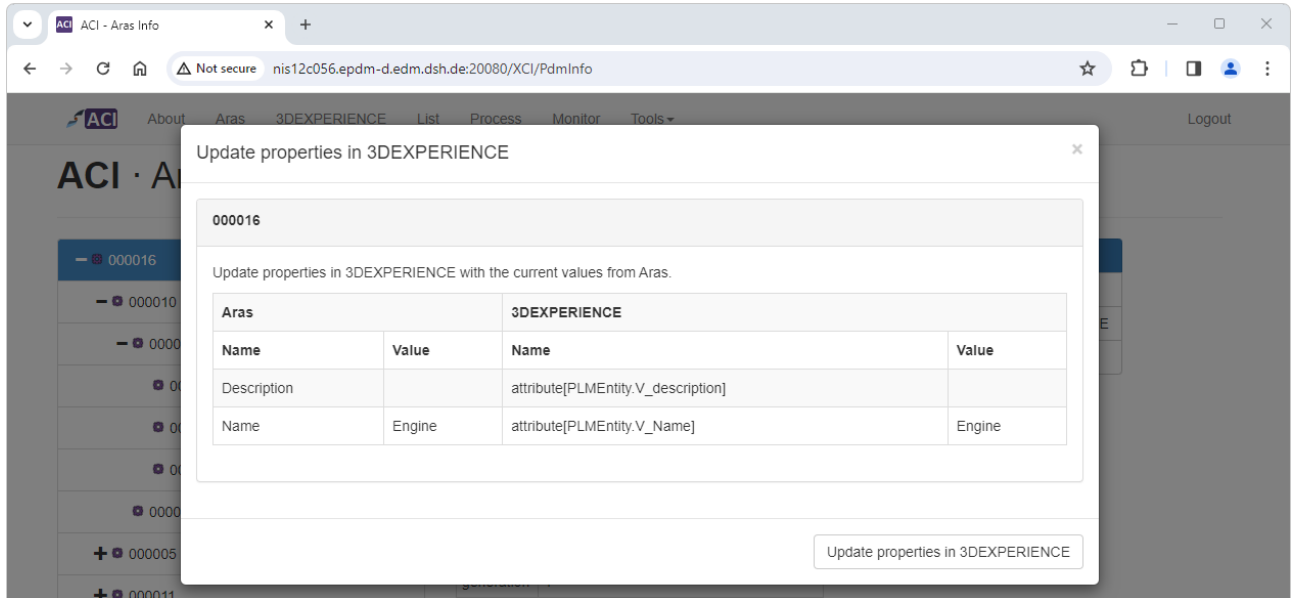


Figure 36: ACI Web – Aras – Update in 3DEXPERIENCE

4.2.3 revise in 3DEXPERIENCE

revise in 3DEXPERIENCE revises the selected object in 3DEXPERIENCE. The object must have been previously transferred and the object mastership must be with 3DEXPERIENCE. The revise is started with the *Revise in 3DEXPERIENCE* button.

This command needs to be enabled by your administrator to be accessible.

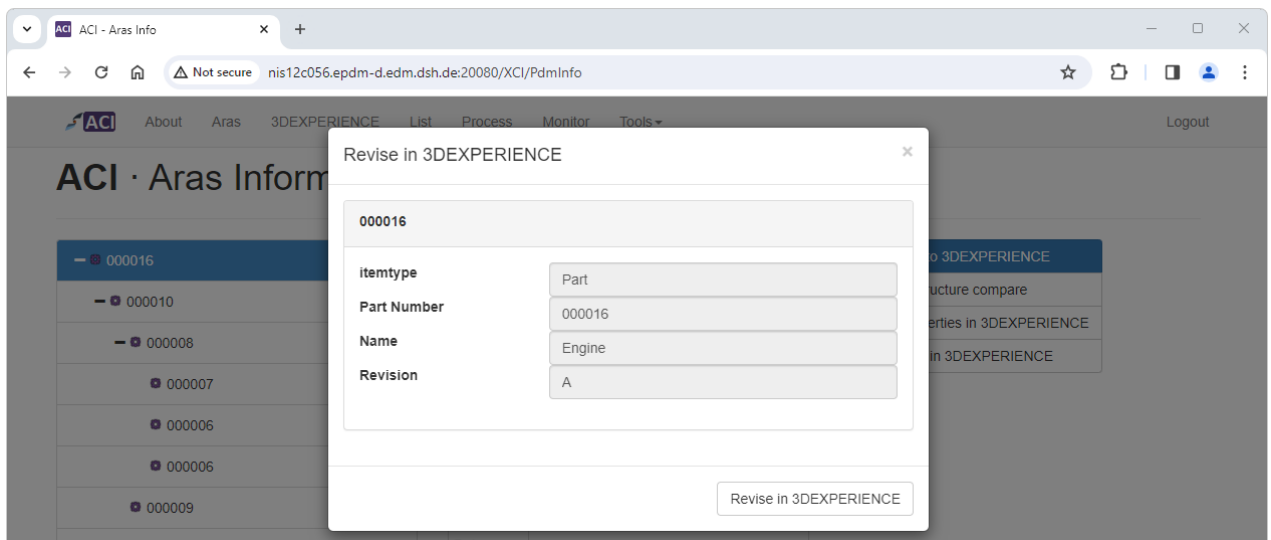


Figure 37: ACI Web – Aras – Revise in 3DEXPERIENCE

4.2.4 structure compare

Compare the structure in Aras and 3DEXPERIENCE to check if all Parts in the structure have been successfully transferred to 3DEXPERIENCE.

This command can be disabled by your administrator.

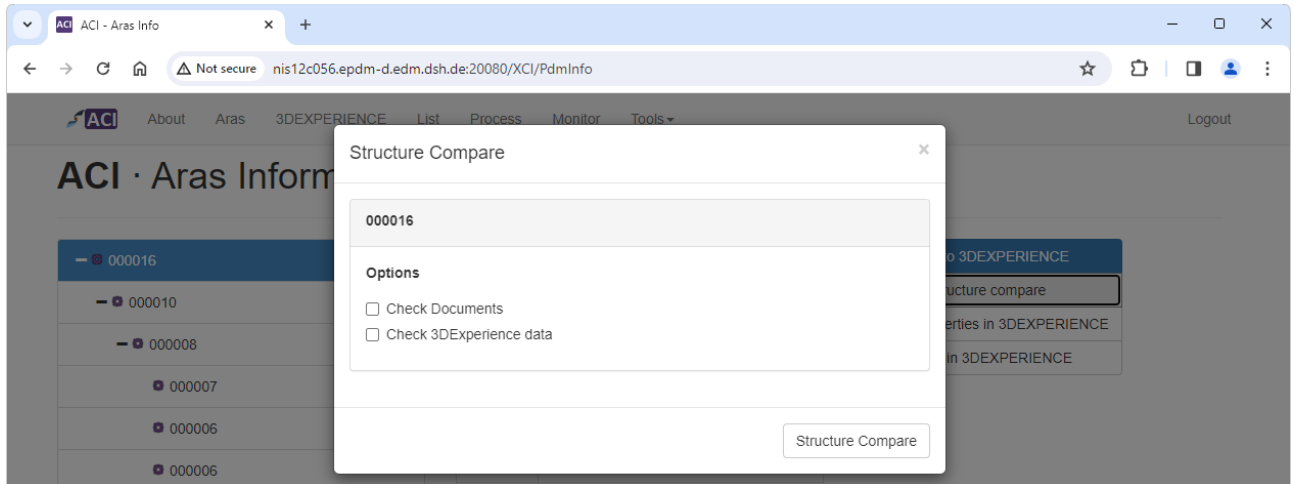


Figure 38: ACI Web – Aras – structure compare

Options for the structure compare:

- Check Documents

Activate to compare Dataset transfer status between Aras and 3DEXPERIENCE.

- Check 3DExperience data

If not activated, the Aras structure is checked against the ACI mapping database only. Checking against 3DEXPERIENCE data can take considerably more time due to query and expand for the objects in 3DEXPERIENCE.

For large structures the compare may take time due to query and expand of the structure in both Aras and 3DEXPERIENCE. The compare is therefore executed asynchronously and the result can later be retrieved from the Process page:

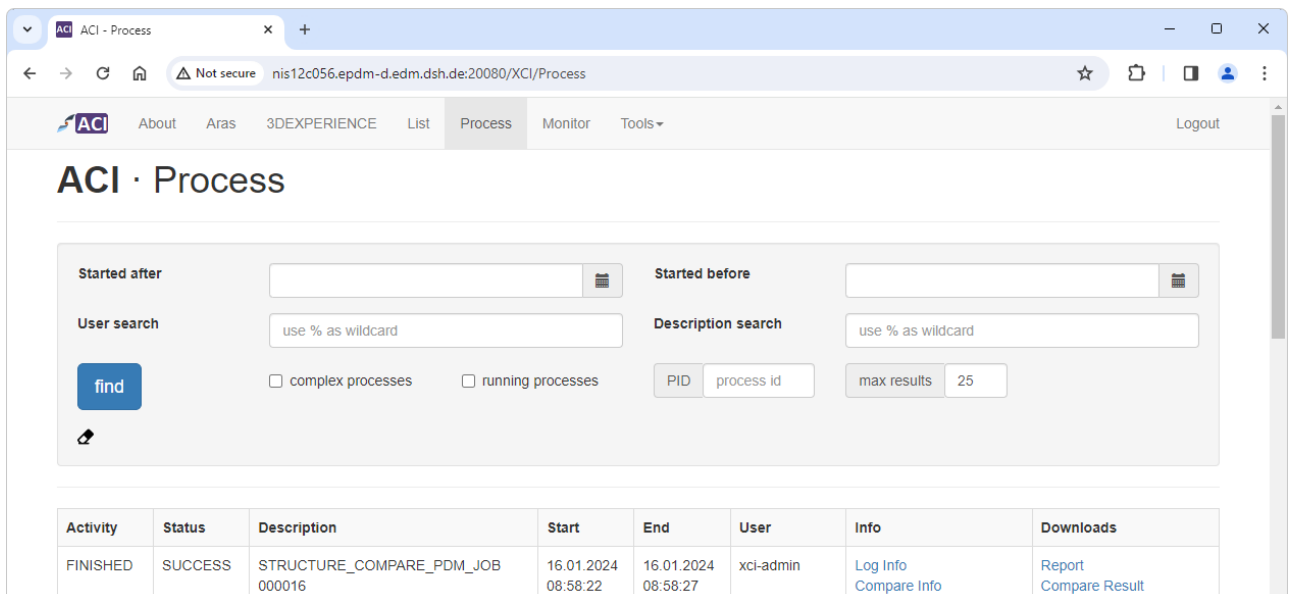


Figure 39: ACI Web – Aras – Structure compare process status

Compare Info opens a graphical representation of the comparison in a new browser tab. **Compare Result** downloads a .csv file containing the comparison result.

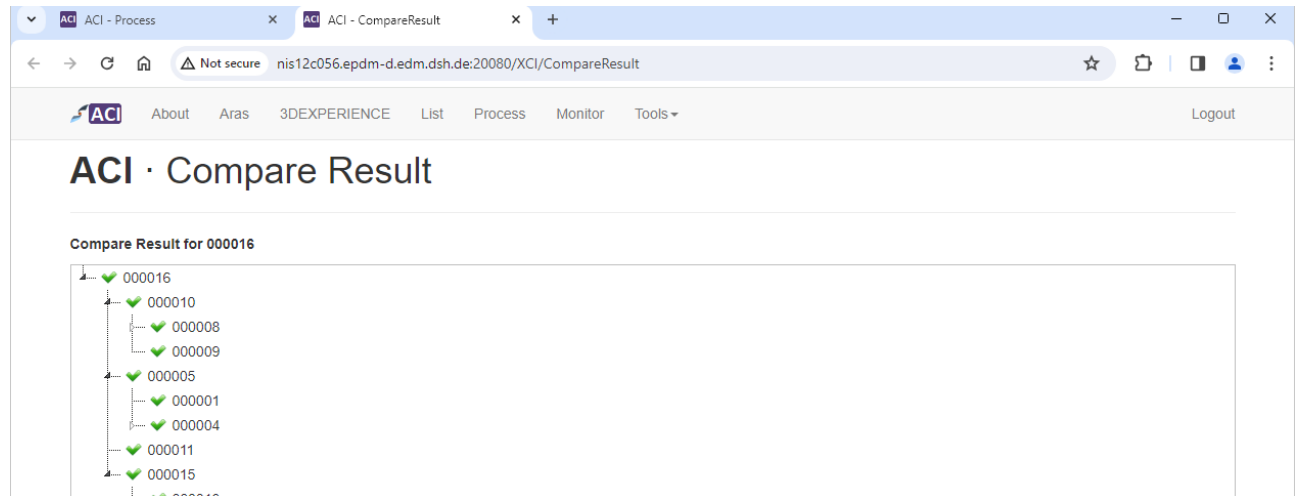


Figure 40: ACI Web – Structure Compare graphical result

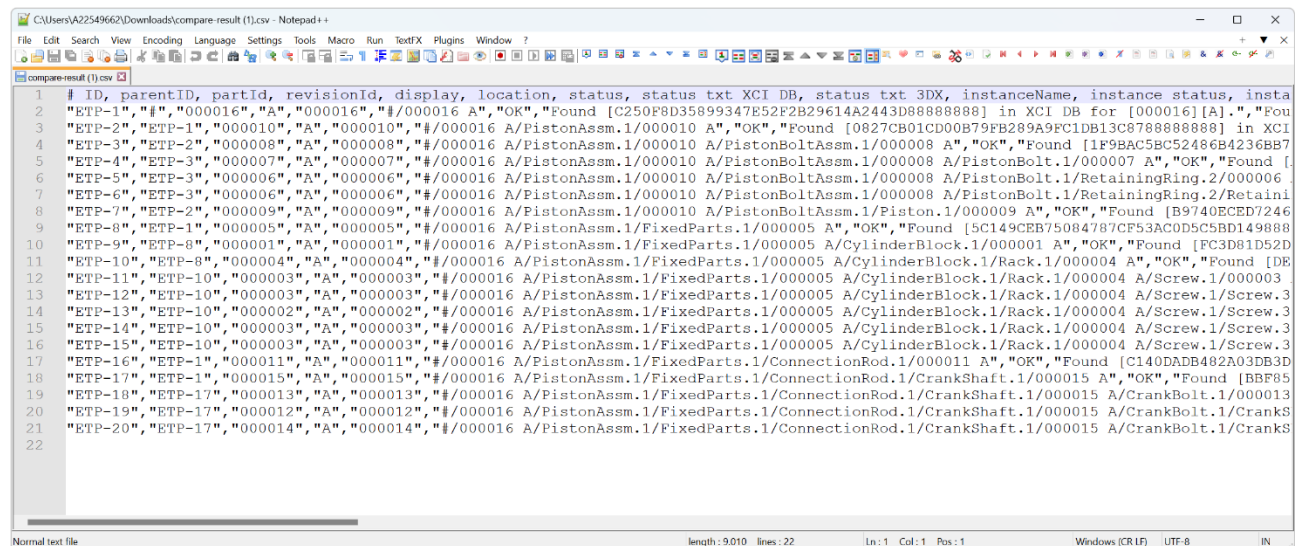


Figure 41: ACI Web – Structure Compare .csv result

4.3 3DEXPERIENCE

On the *3DEXPERIENCE* page you can query for 3DEXPERIENCE objects of different types:

- Physical Product
- Engineering Folder

In the query criteria fields you can use wildcards. Click on the *find* button to start the query.

The query result will be displayed in the table below. When you click on the display name of the object the object will be shown on a new page.

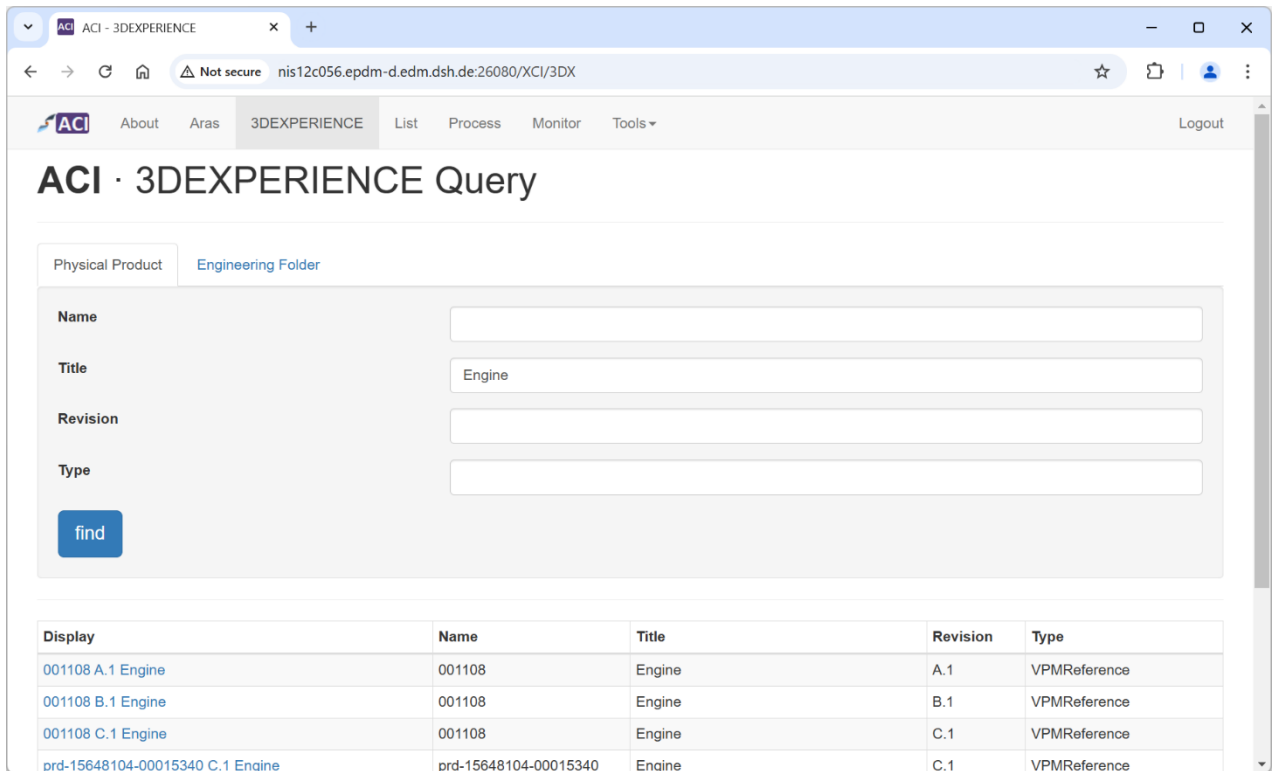


Figure 42: ACI Web – 3DX – Query result

When opening a result from the query, information about that object are displayed:

- structure tree to expand the structure below the selected object in 3DEXPERIENCE
- 3DEXPERIENCE properties of the selected object
- commands, for example transfer to 3DEXPERIENCE or structure comparison with 3DEXPERIENCE

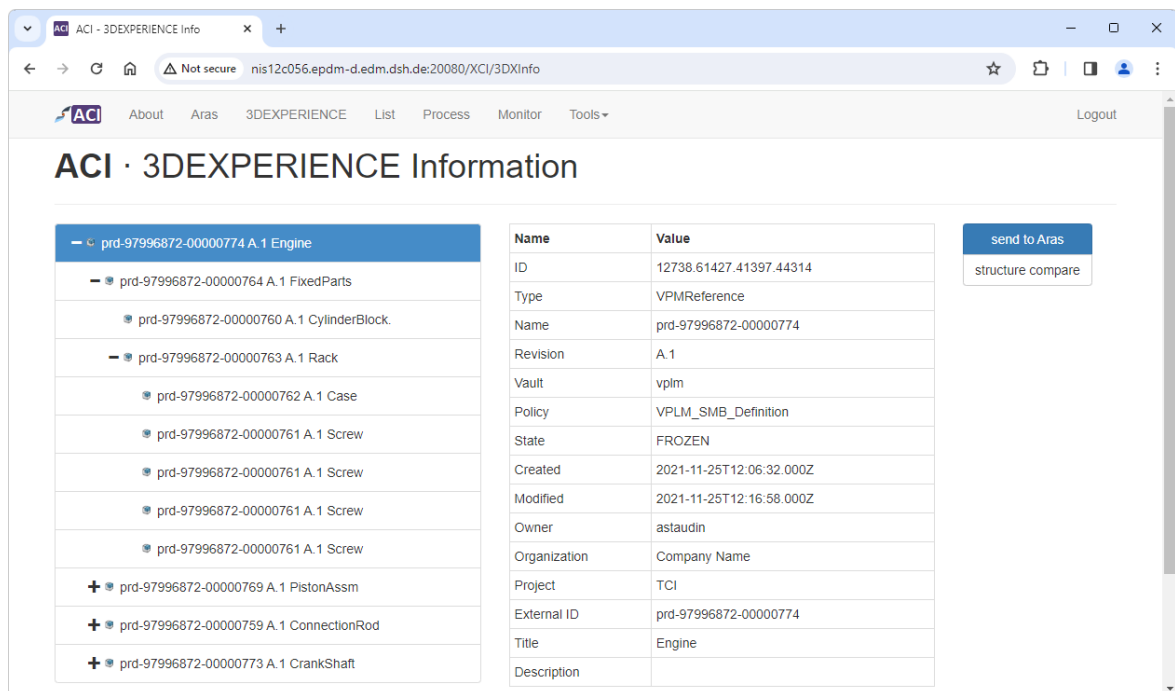


Figure 43: ACI Web – 3DX – Information about a 3DEXPERIENCE object

By clicking the *send to Aras* button you can start the transfer to Aras Innovator. In this dialog you have some options, to configure the *Send to Aras* functionality.

For details, please refer to *chapter 3.7 ACI command Send to Aras*.

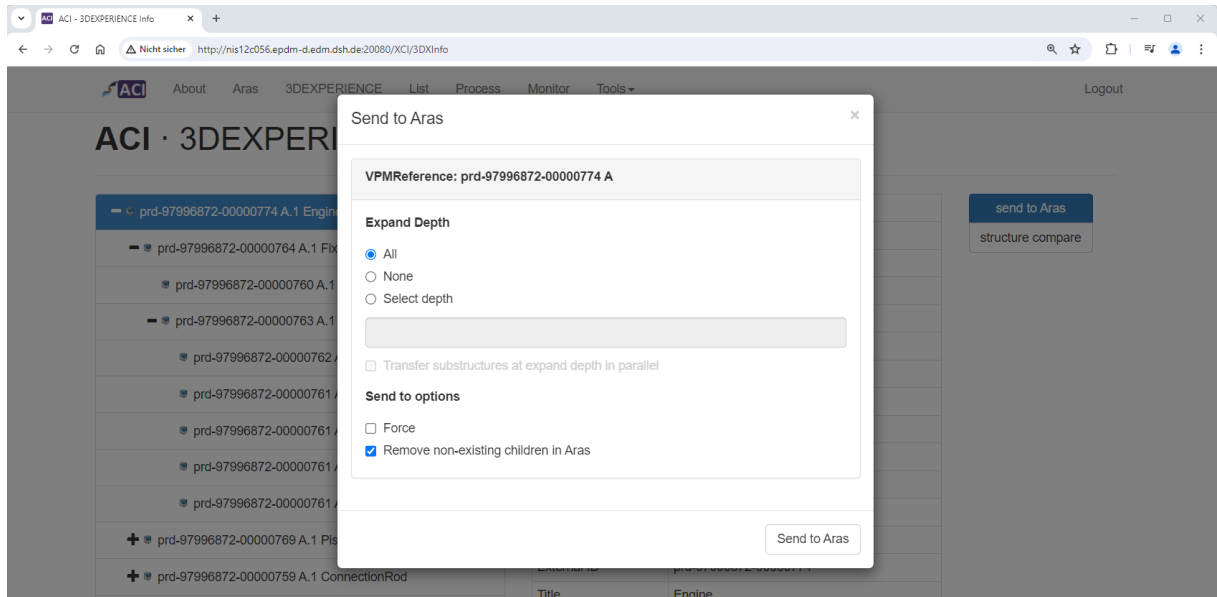


Figure 44: ACI Web – 3DX – Send to Aras options

4.3.1 structure compare

Compare the structure in Aras and 3DEXPERIENCE to check if all Items in the structure have been successfully transferred to Aras.

This command can be disabled by your administrator.

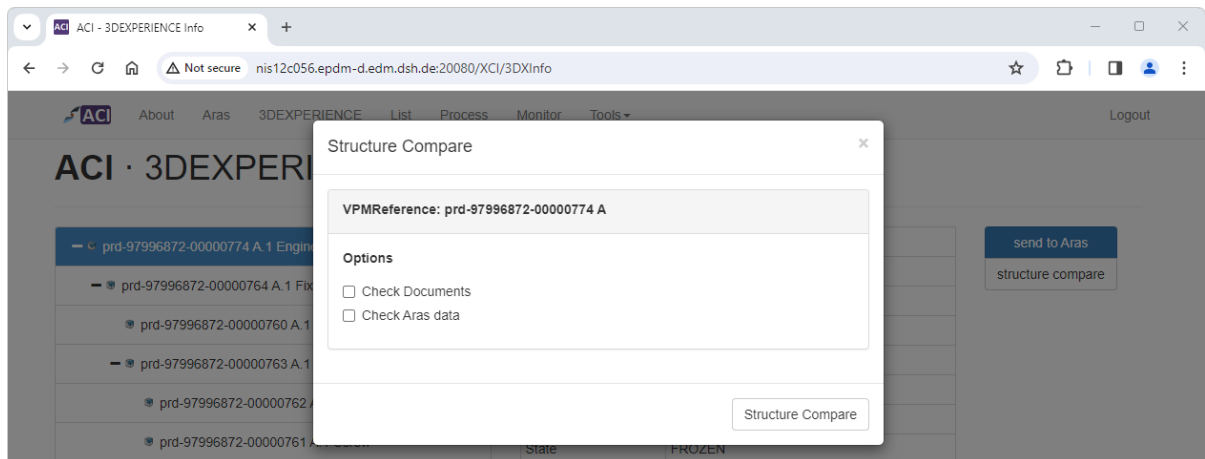


Figure 45: ACI Web – 3DX – Structure compare options

Options for structure compare:

- Check Documents
Activate to compare Dataset transfer status between Aras and 3DEXPERIENCE.
- Check Aras data

If not activated, the Aras structure is checked against the ACI mapping database only. Checking against Aras data can take more time due to query and expand for the objects in Aras.

For large structures the compare may take time due to query and expand of the structure in both Aras and 3DEXPERIENCE. The compare is therefore executed asynchronously, and the result can later be retrieved from the Process page by the *Compare Info* and *Compare Result* links:

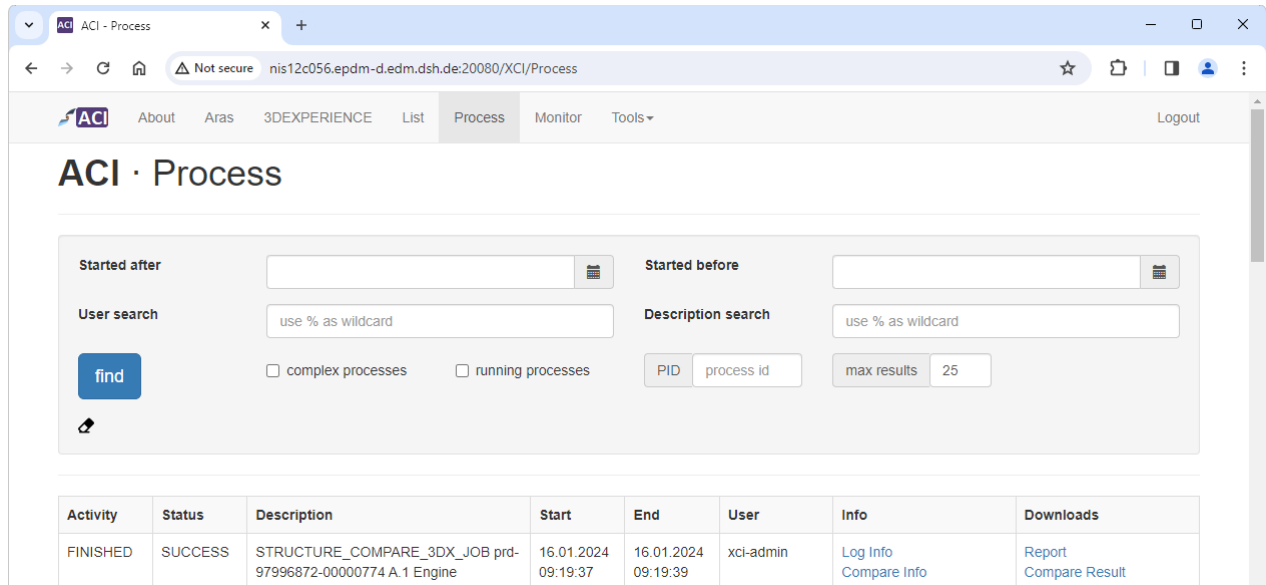


Figure 46: ACI Web – Process – Structure Compare Process Status

4.4 List

With list processing you can transfer a list of objects between Aras and 3DEXPERIENCE. Upload a .csv file containing the list of objects. Once uploaded the list is automatically validated against Aras or 3DEXPERIENCE to check if the objects exist.

After validation the list can be send to Aras or 3DEXPERIENCE. If there were errors during object validation, the erroneous objects will be highlighted. You can filter the list to only show these erroneous objects.

Using Save you can download the validated list.

The input format list transfer from Aras to 3DEXPERIENCE is (type may be empty):

```
#Part Number;Revision;Type
000010;A;Part
000005;F;Part
000011;A;
000015;A;
```

The input format list transfer from 3DEXPERIENCE to Aras is (type may be empty):

```
#Name;Revision;Type
000010;A;Part
000005;F;Part
```

000011;A;
 000015;A;

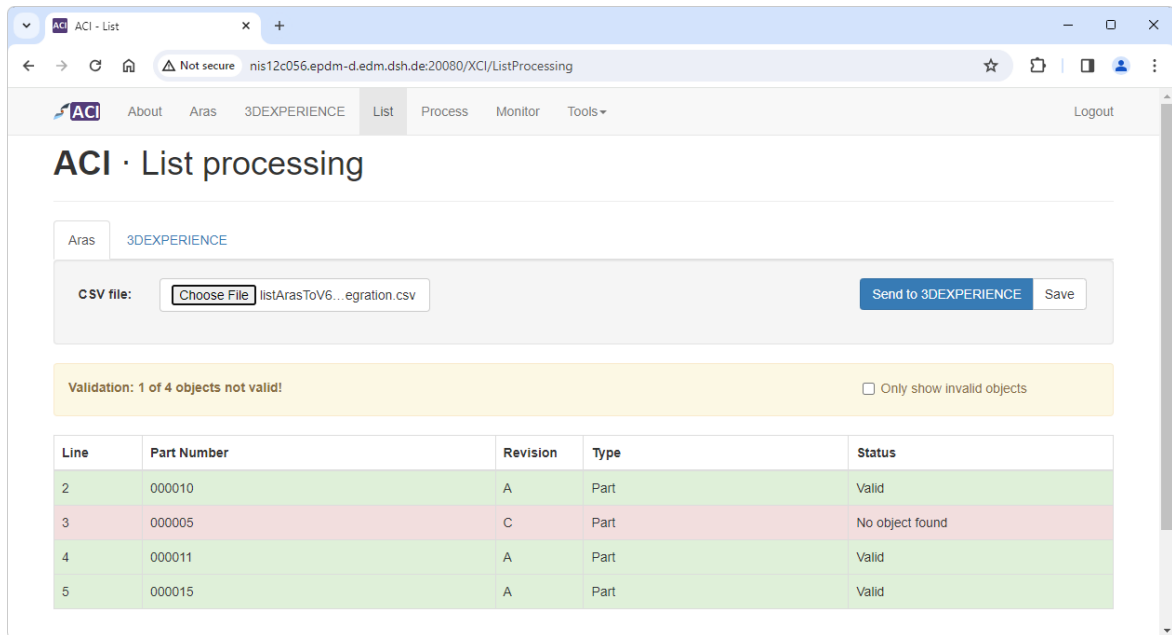


Figure 47: ACI Web – List – Aras – List partially validated.

4.5 Process

On the *Process* page you can get the information about the processes of the transfer actions.

The search for specific data transfer jobs is possible by entering a started after date, started before date, username and/or a description search string. For the dates the calendar widget can be used. For the strings the wildcard % is possible.

Click the *find* button to start the query. The query result will be displayed in the table below.

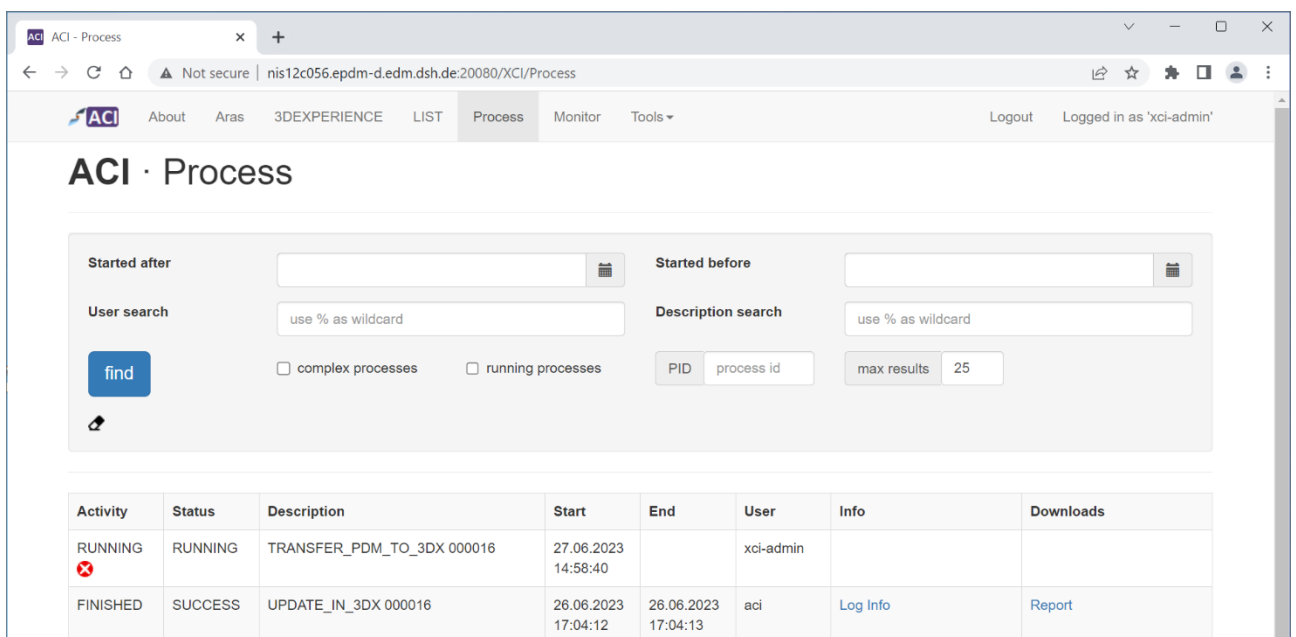




Figure 48: ACI Web – Tools – Process – Query result

The result will show the activity and the status with start and end date. The description includes the function and the display name of the object. If the Status is FAILED, more information is available with the tooltip and the link of the Status.

Running processes (Status RUNNING) can be stopped by clicking . Processes are not stopped immediately, instead processes check throughout processing if stop has been triggered to terminate gracefully.

When activating the "complex processes" checkbox, only complex processes are searched, e.g. Folder transfer or List transfers. The  symbol in the result for a complex process shows all child processes of this complex process.

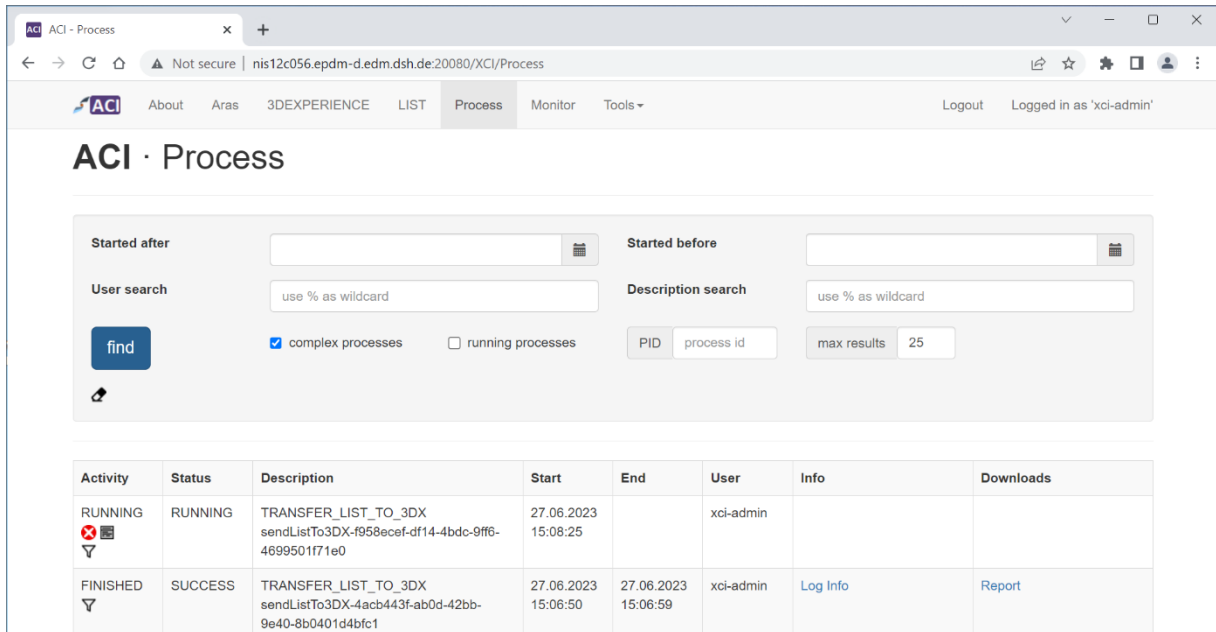



Figure 49: ACI Web – Tools – Process – Query result for complex processes.

Use  to show all queued processes of a list (transfer that have been initiated by the user but have not been started by ACI yet).

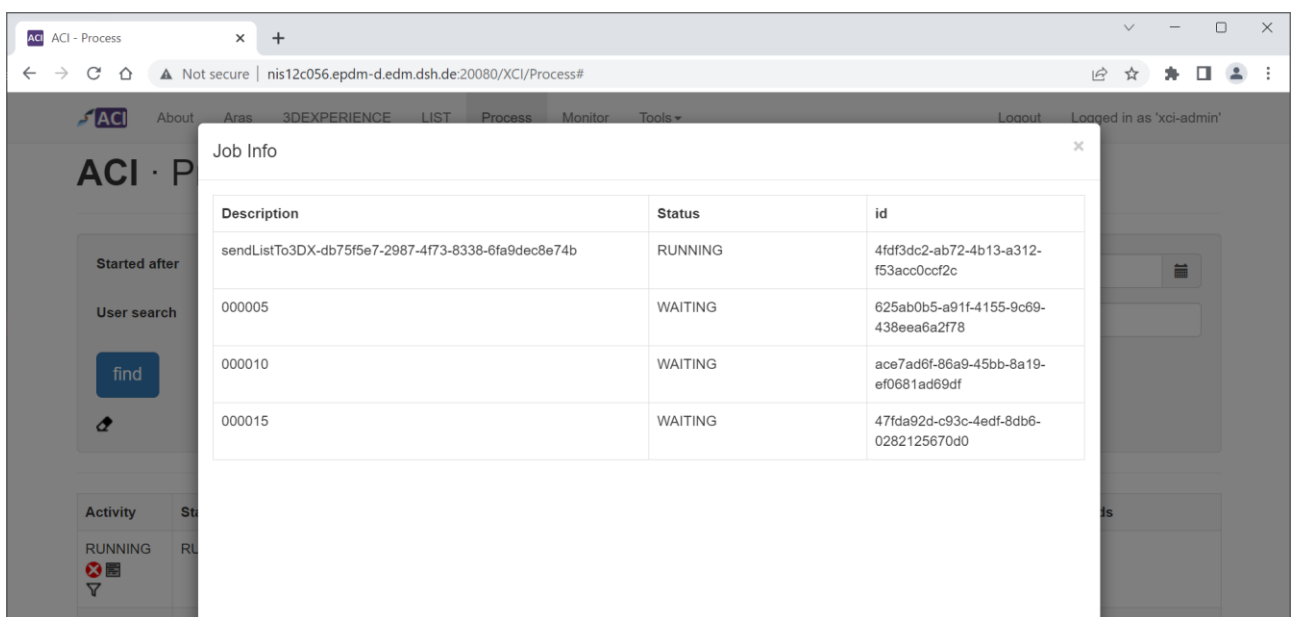


Figure 50: ACI Web – Tools – Process – Show queued jobs for a list process.

If Log files are available, the open Info link provides more information.

FINISHED	SUCCESS	STRUCTURE_COMPARE_3DX_JOB prd-97996872-0000774 A.1 Engine	17.03.2023 18:56:16	17.03.2023 18:56:16	xci-admin	Log Info Open Log Info for Job 0df81d35-ee3-4e47-ae32-232f12cb50a9	Report Compare Result
FINISHED	SUCCESS	STRUCTURE_COMPARE_PDM_JOB 000016	17.03.2023 18:45:26	17.03.2023 18:45:27	xci-admin	Log Info Compare Info	Report Compare Result
FINISHED	SUCCESS	TRANSFER_3DX_TO_PDM prd-	17.03.2023	17.03.2023	conwitti		Report

Figure 51: ACI Web – Tools – Process – open log info

The open Info link provides more Information about the process.

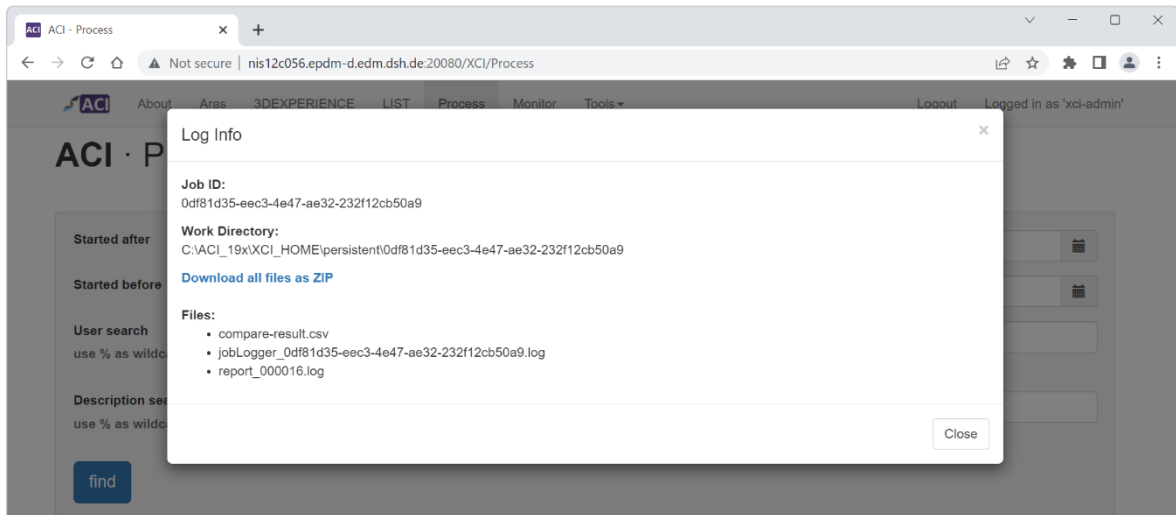


Figure 52: ACI Web – Tools – Process – Log Info dialog

The info contains the Work directory and the Files which can be downloaded from the Work directory as zip file. The downloadable files are logs, control and meta information files, but not CAD Files. The zip files starting with “CS_” are logs from the Conversion Server infrastructure.

The zip file can be downloaded with the [Download all files as ZIP](#) link.

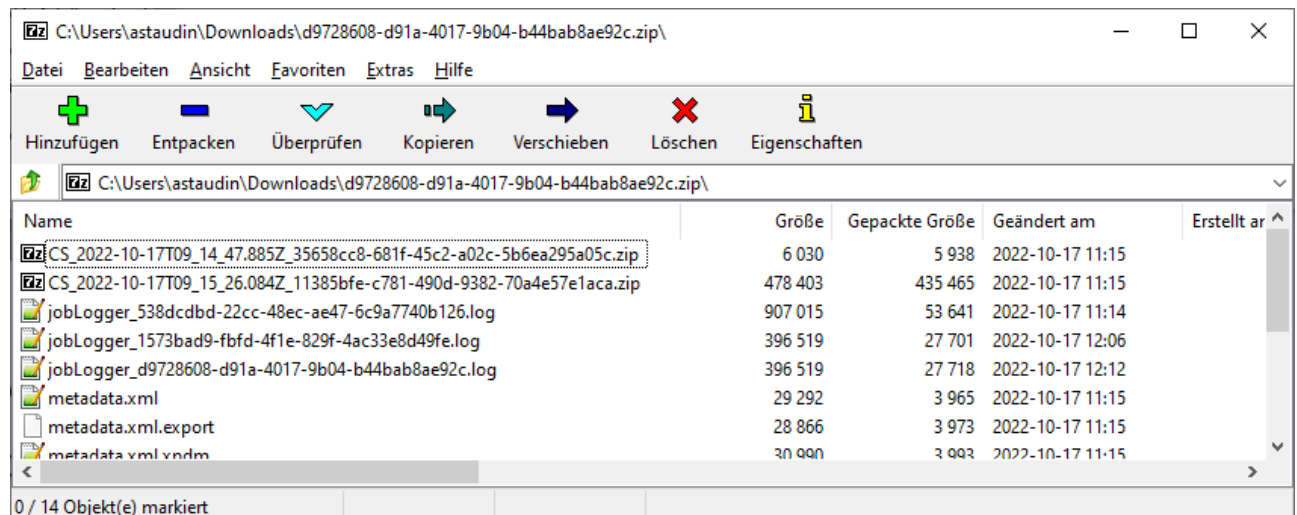


Figure 53: ACI Web – downloaded ZIP file

The CS logs contain logs from the Converter Server and an info file with the CS info.

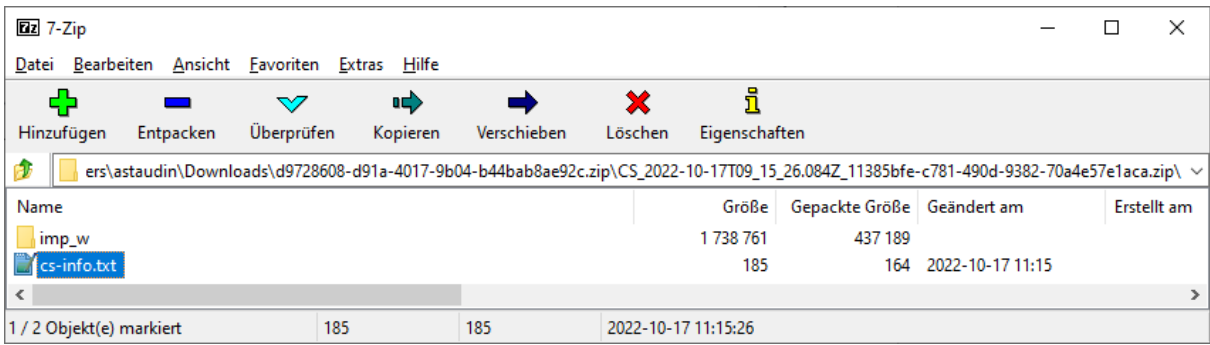


Figure 54: ACI Web – downloaded CS ZIP file

The “cs-info.txt” contains the following info:

```

Date: 2022-10-17T09:15:26.084Z
CS-Host: NIS07C203.epdm-d.edm.dsh.de
CS-Port: 17080
Working directory: C:\XCI\XCI_CS_HOME\workdir\11385bfe-c781-490d-9382-70a4e57e1aca
Type: v6XPDMImport
  
```

4.6 Monitor

The *Monitor* page will display an overview about the used resources and running processes.

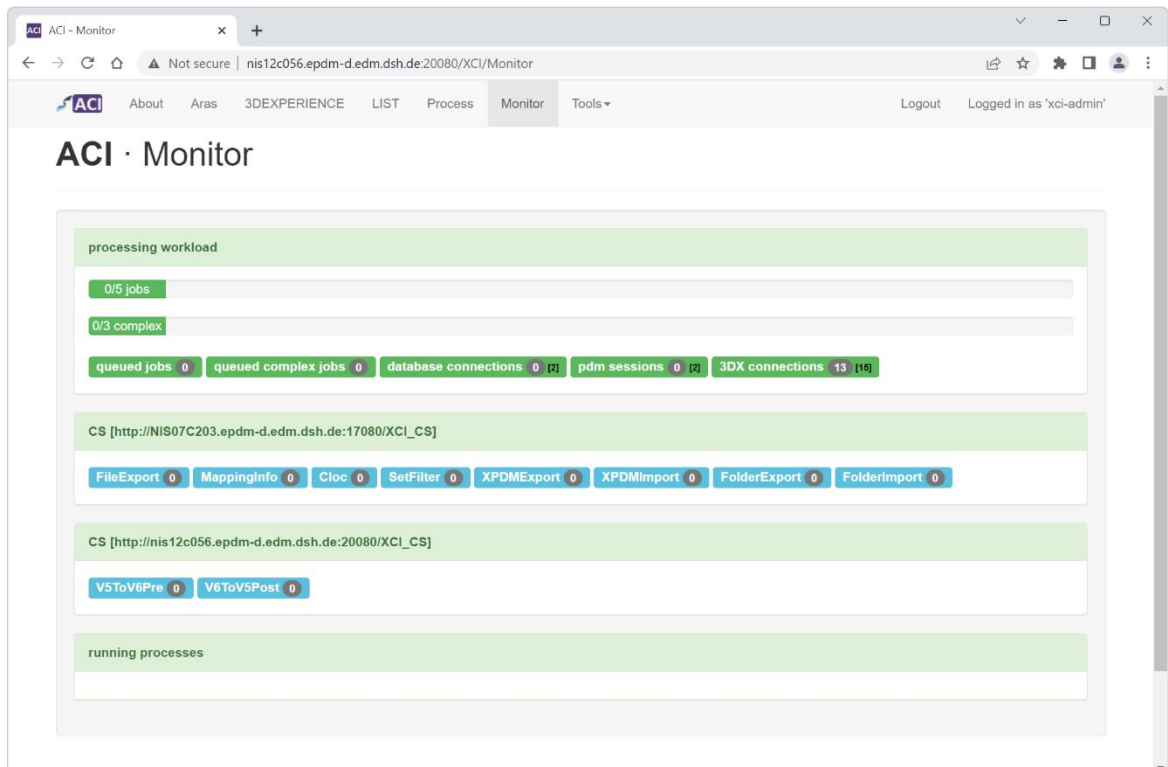


Figure 55: ACI Web – Monitor

The information is grouped in the following sections:

- processing workload: Overview of the job pool workload and the used resources.

- converter server: Overview of the converter server with their configured converters and their workload.
- running processes: Overview of the running processes.

4.7 Tools

There are several tools available in the *Tools* menu.

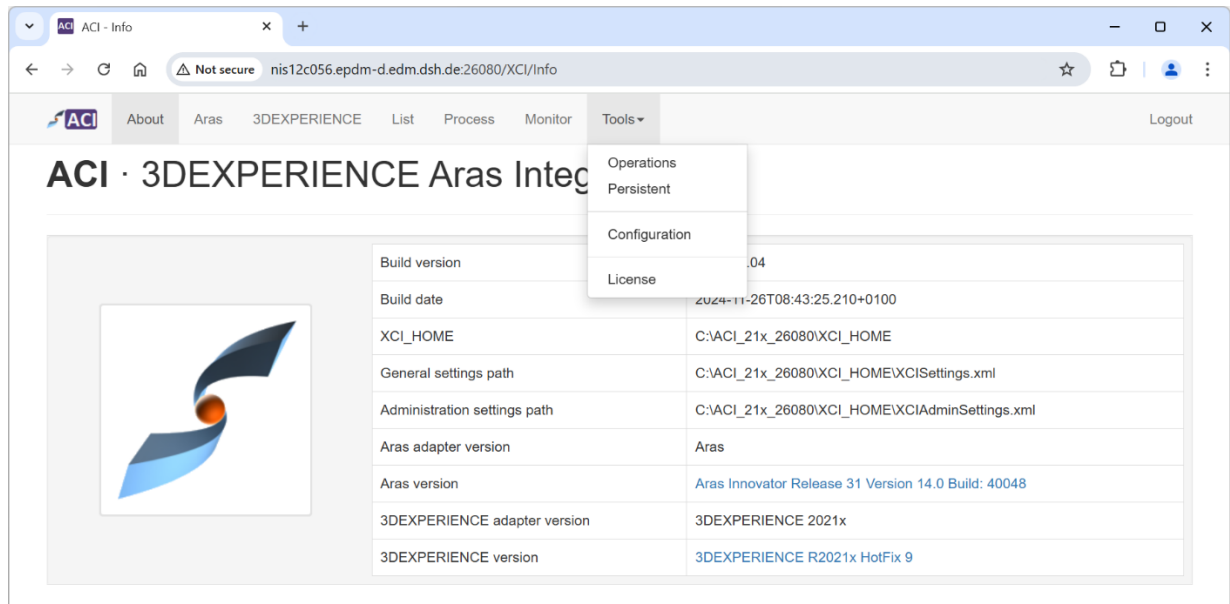


Figure 56: ACI Web – Tools – Operations

The following tools will be described:

- Operations
- Persistent
- Configuration
- Details
- File Cache
- License

Details and File Cache are disabled by default and must be enabled in ACI settings.

4.7.1 Operations

Select *Tools* → *Operations* to get the information about the operations of the transfer actions.

The search for specific data transfer jobs is possible by entering a start date, end date and/or an object search string. For the dates the calendar widget can be used. For the string the wildcard % is possible.

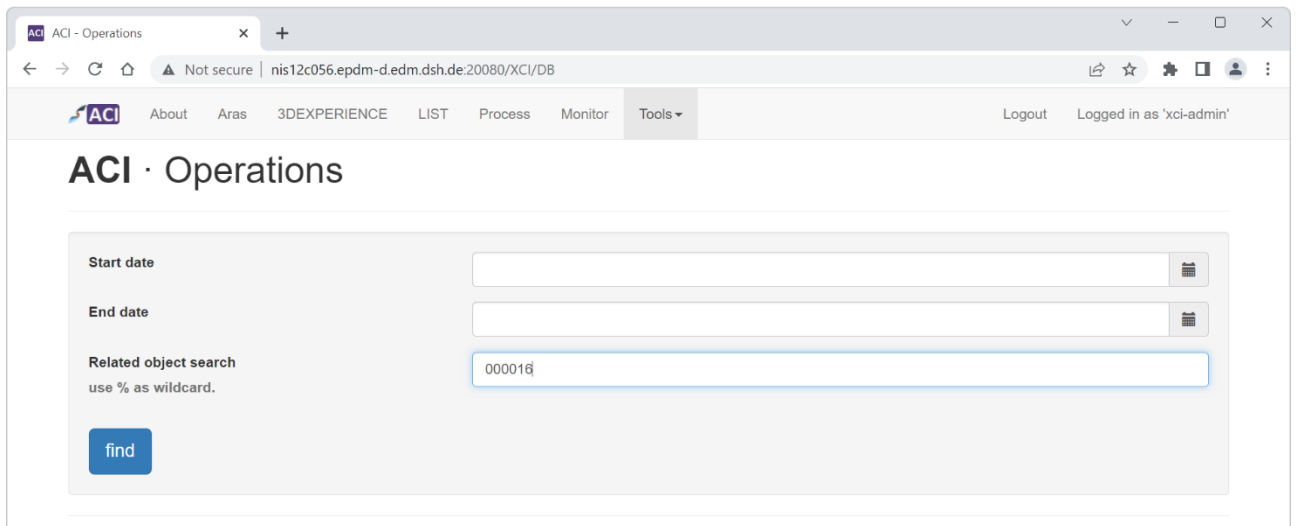


Figure 57: ACI Web – Operations – Query

Click the *find* button to start the query. The query result will be displayed in the table below.

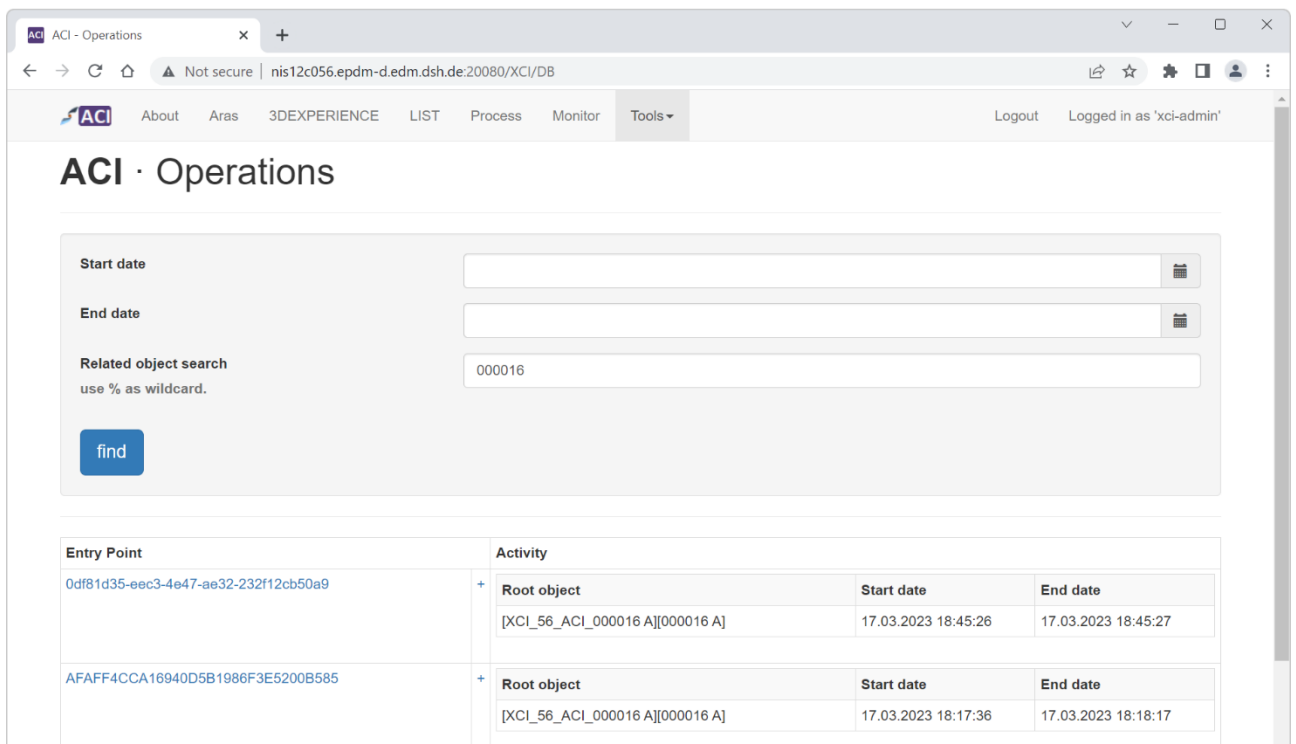


Figure 58: ACI Web – Operations – Query result

By selecting the respective plus sign + detailed information on the individual steps of an Entry Point are displayed.

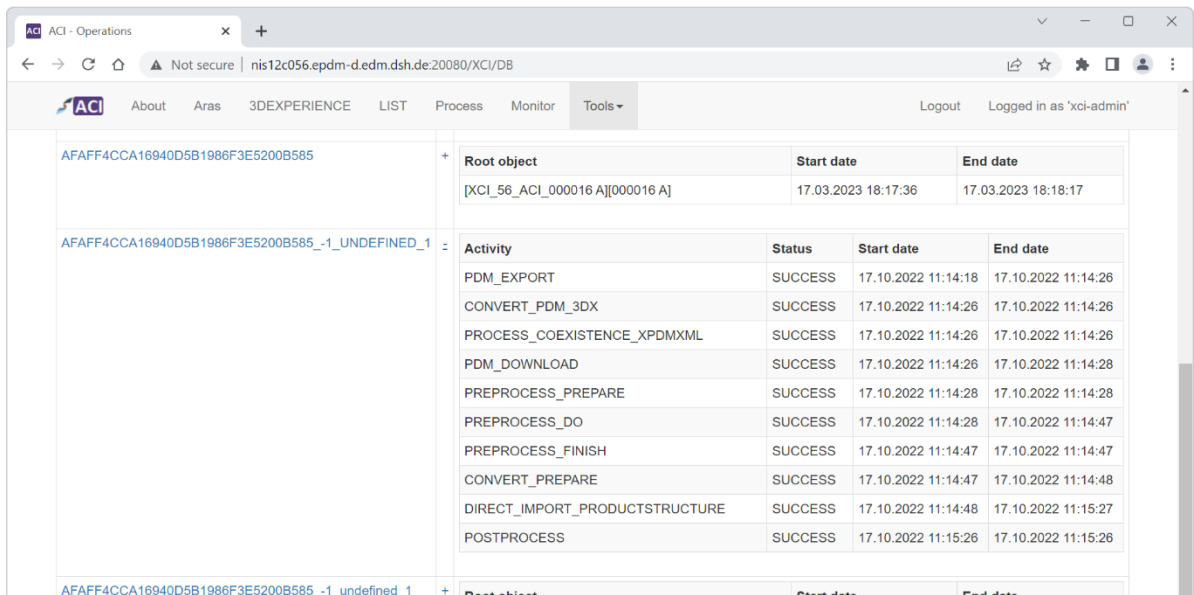


Figure 59: ACI Web – Operations – Details

By clicking on the Entry Point name, the related objects are displayed on a new page.

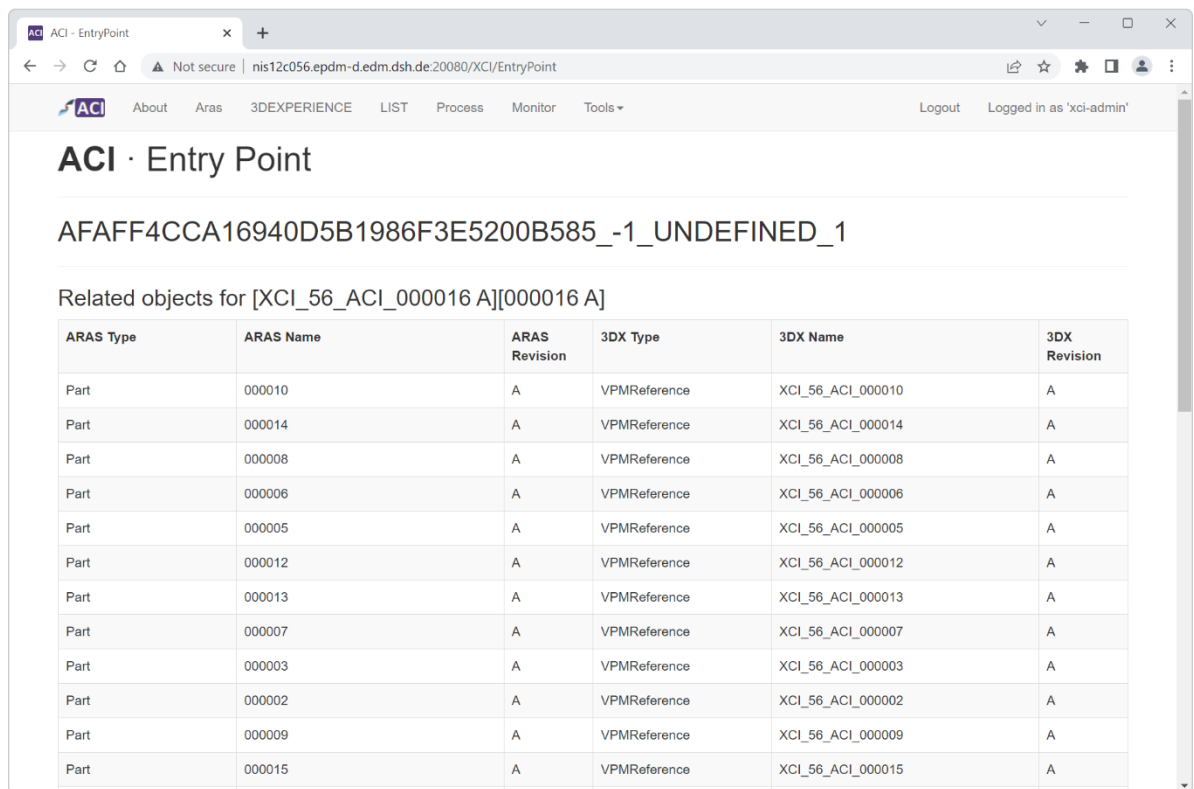


Figure 60: ACI Web – Operations – Entry Point

4.7.2 Persistent

Select *Tools* → *Persistent* to get the information about the operations of the transfer actions stored in the persistent directory.

The information is based on the existing files in the persistent directory.

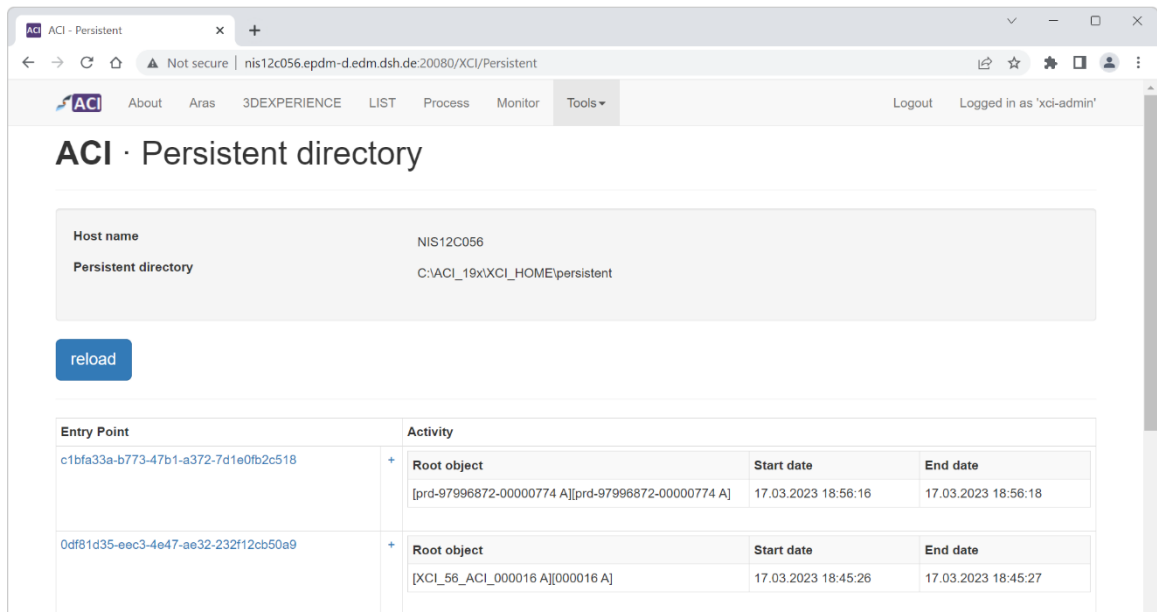


Figure 61: ACI Web – Persistent directory

By selecting the respective plus sign + detailed information on the individual steps of an Entry Point are displayed.

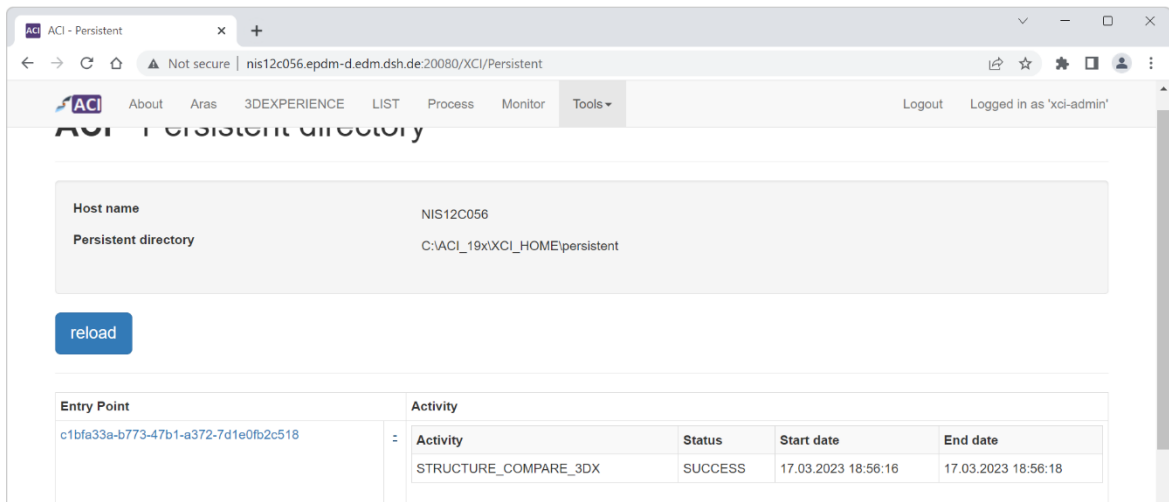


Figure 62: ACI Web – Persistent directory – Details

By selection the Entry Point name, the related objects are displayed on a new page.

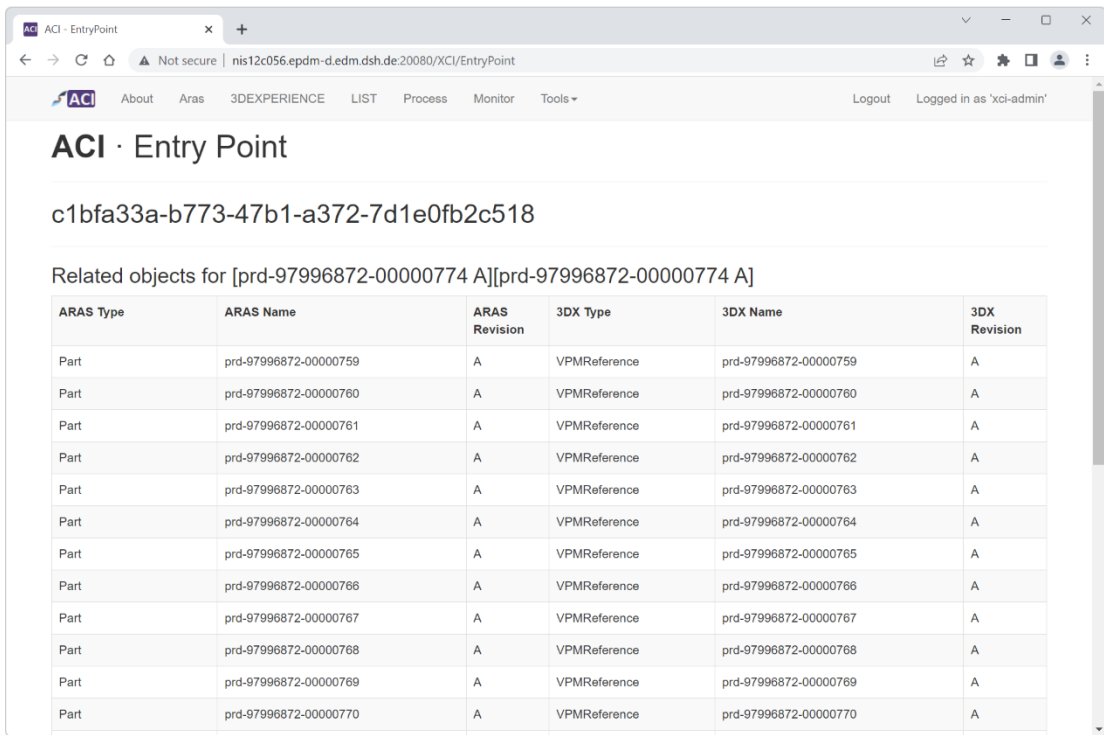


Figure 63: ACI Web – Persistent directory – Entry Point

4.7.3 Configuration

Select Tools → Configuration to see the ACI configuration.

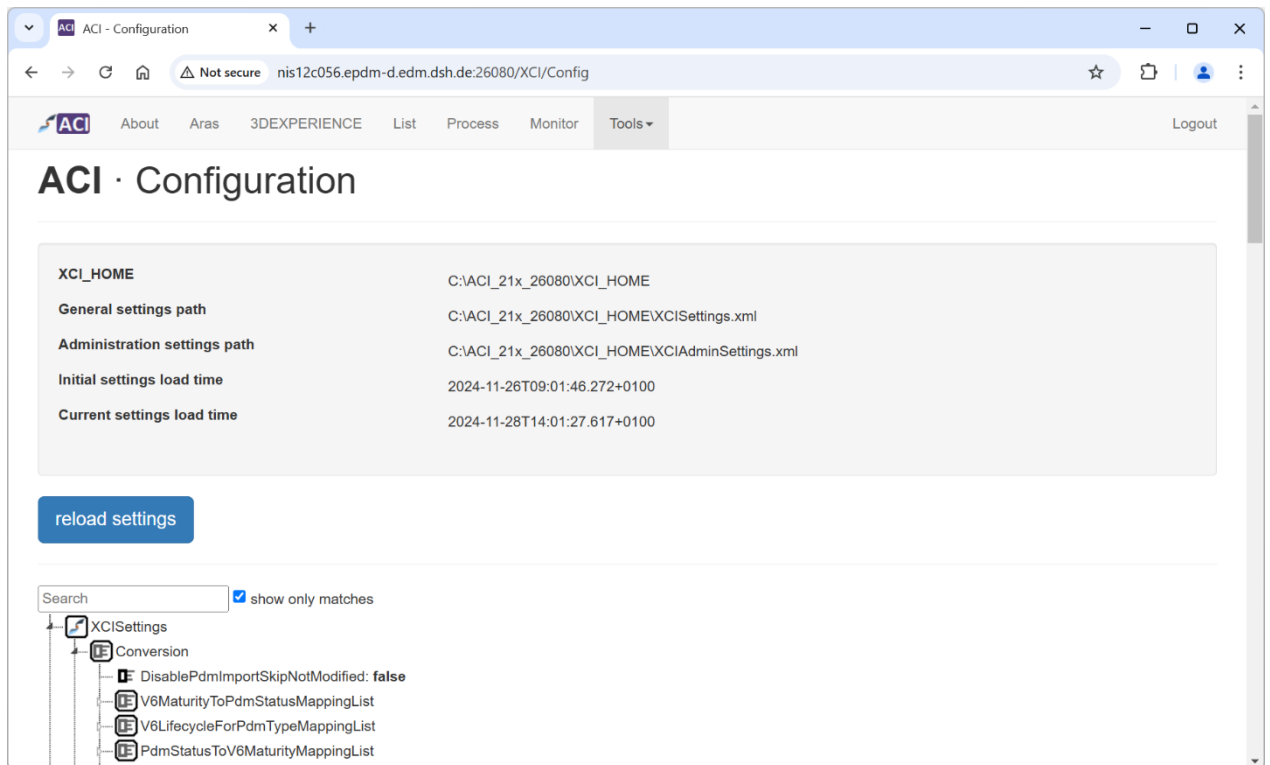


Figure 64: ACI Web – Tools – Configuration

The ACI configuration is displayed. You can search for specific settings, if found they are highlighted in red.

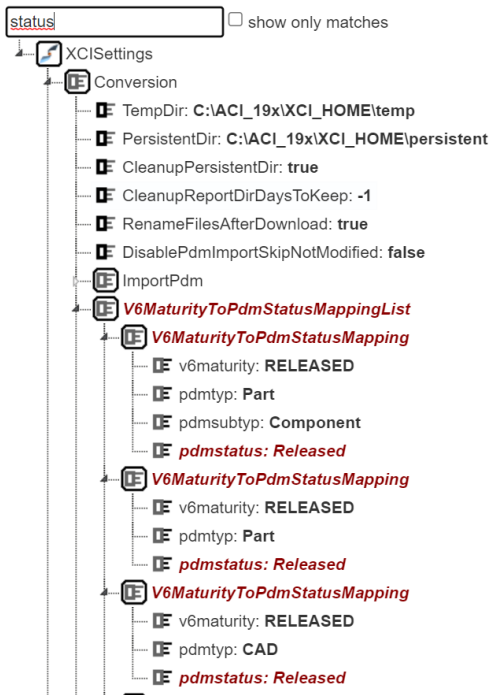


Figure 65: ACI Web – Tools – Configuration: searching configuration values.

By clicking the reload settings button, the settings will be reloaded from the *XCISettings - ARAS.xml* file.

If the settings are successfully loaded, the success message Loaded new settings is shown, otherwise an error is displayed.

4.7.4 Details

Select *Tools* → *Details* to get detail information for a given ID. The id can be from Aras or 3DEXPERIENCE.

This view must be enabled by your administrator to be accessible.

Click on the *find* button to start the query. The query result will be displayed in the table below.

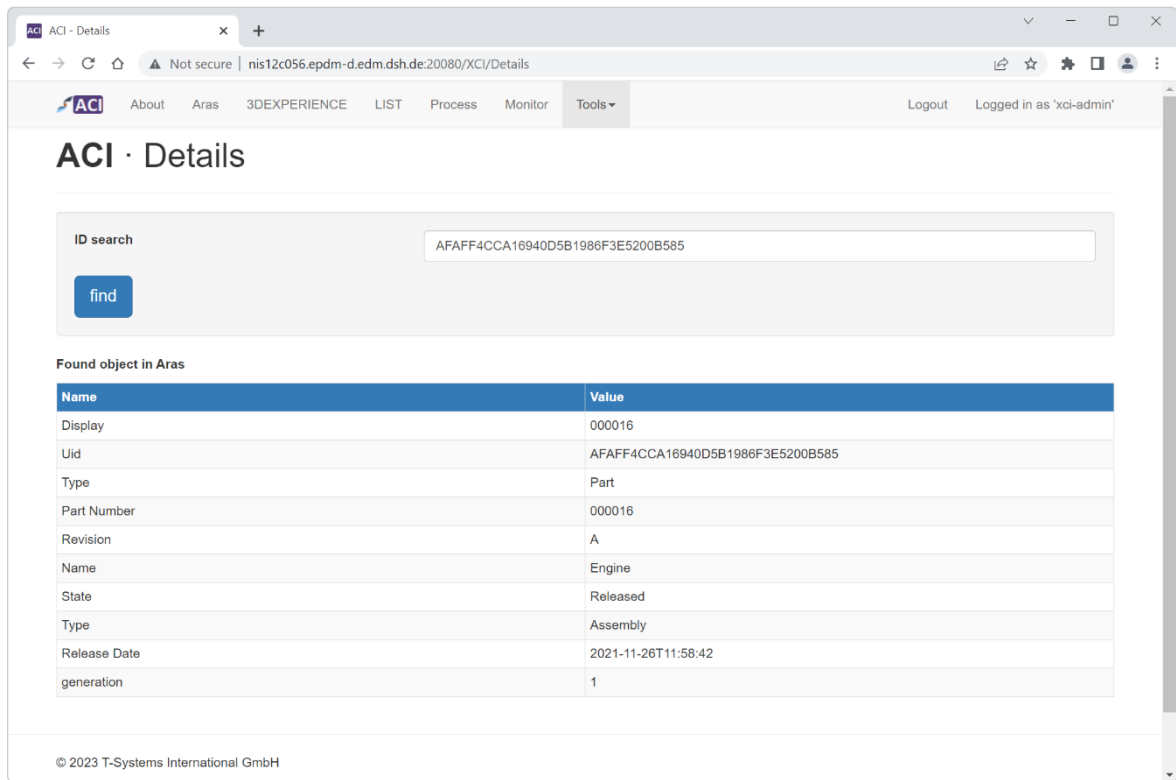


Figure 66: ACI Web – Details – Query result page

4.7.5 File Cache

Select *Tools* → *File Cache* to get information about File Cache content.

This view must be enabled by your administrator to be accessible.

Click on the *find* button to start the query. The query result will be displayed in the table below.

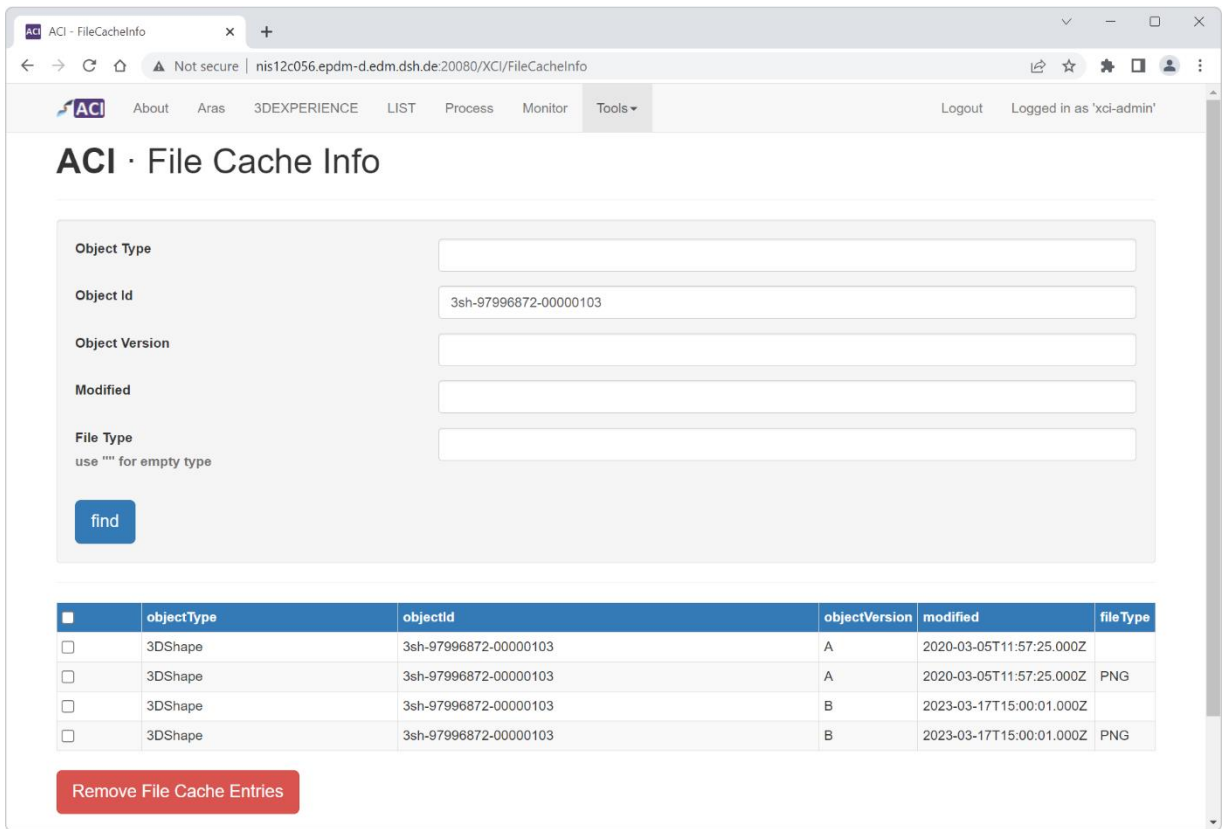


Figure 67: ACI Web – File Cache – Query result page

With the Remove File Cache Entries button the checked entries can be removed from the File Cache. After confirming the request, the entries are removed.

4.7.6 License

The *License* page displays information about the license server, how many ACI server and job licenses are consumed and how many are available.

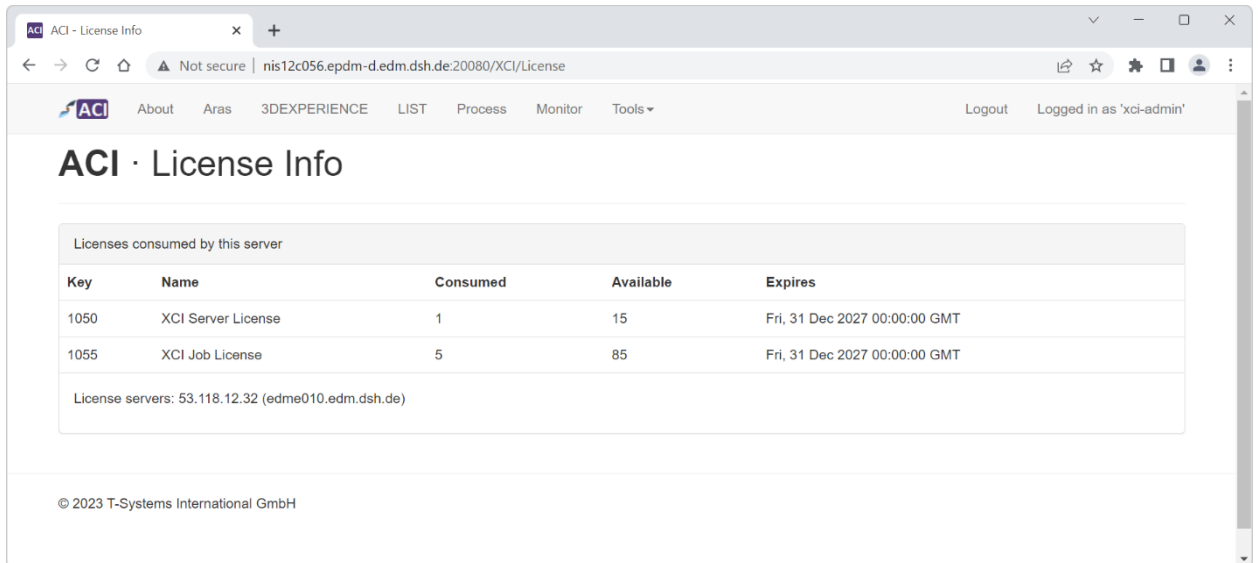


Figure 68: ACI Web – License – Details about the license server and allocated licenses