

PDM Workbench NX

The Siemens NX CAD Integration



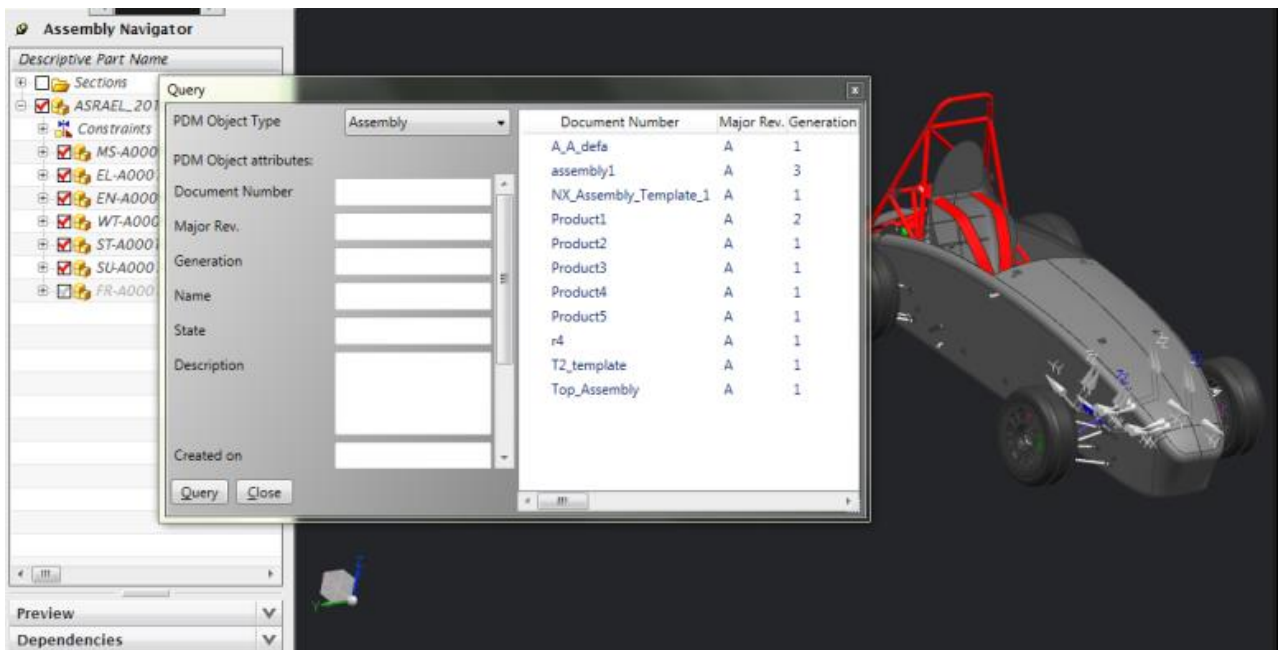
PDM Workbench NX is an extension of the Siemens NX user interface integrating a lightweight PDM system to manage the data.

Connector

To ease the data management of NX data the connector enables the use of a lightweight PDM system directly within the NX user interface. The connector is dedicated for displaying and manipulating PDM data and enables the designer to take full advantage of PDM capabilities supporting collaborative product development, all within the NX environment the designer is familiar with.

Benefits

- CAD specific PDM functionality in NX enabling design engineers to stay within NX only
- Allows access to the PDM system from every client machine where the Connector is running



Key Features

- Supports PDM capabilities like query, check out/in, update, create, lock of PDM and CAD data
- Supports templates for new files
- Can be configured to any customer data model

Technical Highlights

- SOAP (Simple Object Access Protocol) based communication (firewall-friendly)
- PDM functionality can be added or removed by configuration

PDM Workbench Support Table

Application	Release
Aras Innovator	12 SP9, 14+ other releases on request
Siemens NX	V1926, V2007, V2206, V2212, V2306, V2312 other versions on request

Platform	OS Level
Microsoft Windows	Client: Windows 10 (64 Bit) Server: Server 2012, Server 2016, Server 2019

Contact

T-Systems International GmbH
Fasanenweg 5
70771 Leinfelden-Echterdingen, Germany
Tel: +49 40 30600 5544
E-Mail: plm.solutions@t-systems.com
Internet: <https://plm.t-systems.net/en-DE/pdm-workbenchNX>

Published by

T-Systems International GmbH
PLM Marketing
Friedrich-Ebert-Alle 140
53113 Bonn, Germany