



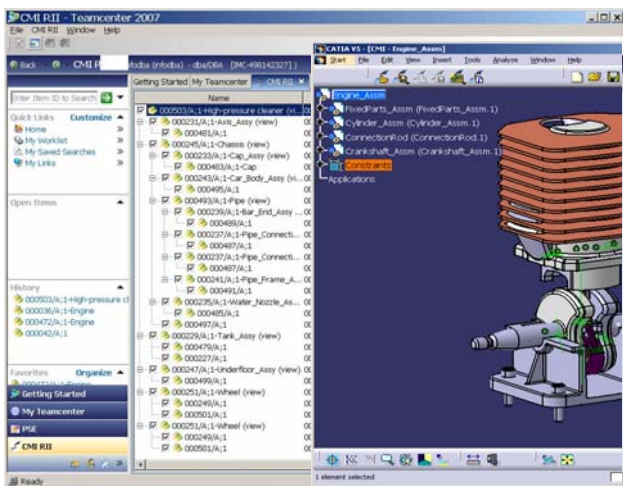
One CATIA Integration for all Teamcenter customers

With the first release of Teamcenter Unified, PLM users ask, when will T-Systems provide a CATIA CMI solution to support Teamcenter Unified?

In the past 14 years T-Systems has developed and incorporated a multitude of features within its CMI product to support CATIA design for the Automotive and Aerospace & Defense industry. Many of the CMI features and concepts are unique to CMI and are not available within Teamcenter Unified, Teamcenter Engineering or Matrix / Enovia.

T-Systems has made available these unique CMI features to Teamcenter Unified users by integrating the core CMI engine with Teamcenter Unified.

The new product, "CMI RII" has been released, providing support for Teamcenter Unified to CATIA.



Key CMI RII characteristics:

- Uses the same CATIA modules as classic CMI.
- Seamlessly integrated with the Teamcenter Unified Rich Client
- A unique "CMI RII Workbench" application utilizing Teamcenter Unified Rich Client as an exchange platform with CATIA
- Support of PSE and an integrated JT-viewer
- Automatic consistency check of CATIA structures
- Management of alternate representations (JT, CGR, ...)
- Catalog and standard part management
- Easily installed and configured (no CAA link process etc.)

Planning to implement Teamcenter Unified – don't re-invent the wheel, consider an industry proven CMI solution.

Upgrading from Teamcenter Engineering to Teamcenter Unified presents an excellent opportunity to eliminate CATIA integration issues with an upgrade to CMI RII. T-Systems offers great rates for upgrades!

Click [here](#) for a short CMI RII demo*
<http://www.cmi-support.com/movies/CMI-RII-BasicDemo/CMI-RII-BasicDemo.html>



First CMI Release for Teamcenter Unified 2007 is available: CMI RII 1.1

Key features of the current release:

- Read and include on-the-fly population of product structures
- Sending of content from PSE and DMU (integrated viewer)
- Update / Synchronize & Save As
- Position Matrices Management
- Catalog Handling
- "CMI Workbench"-mode in CATIA
- CATDrawing, CGR and V4 Model support
- V4/V5 mixed data structures (hybrid mode)
- Local Cache management
- Bi-directional identification (Highlight)
- Supports CATIA mode "Do not activate default shape on open" via "Get original geometry" function.
- Add Temp

Click [here](#) for a list of upcoming features and releases
http://www.cmi-support.com/documentation/CMI_Release_Plan.pdf



CMI PDM-Workbench 2.2 has been released

Is your design process driven by CATIA? Are your designers reluctant to work with cumbersome and overloaded PDM clients? Then PDM-Workbench is the right product for you. Incorporating a seamless PDM client within CATIA, PDM-Workbench is transparent to the designer!

PDM-Workbench release 2.2 supports all key features and concepts available within classic CMI. Highlights:

- Synchronize of CATIA structures to PDM
- On-the-fly creation of CATIA Products
- Creation of CMI Archives
- Automatic replace or repair of broken links

CATIA and Enovia are registered trademarks of Dassault Systèmes.

Teamcenter is a registered trademark of Siemens Product Lifecycle Management Software.

(* flash browser plug-in is required: <http://get.adobe.com/de/flashplayer>

For more information, please visit our CMI website www.cmi-support.com.

If you don't want to receive this newsletter anymore please click here: [UNSUBSCRIBE](#)

Click [here](#) for a short PDM-Workbench demo*
<http://www.cmi-support.com/movies/PDM-WB-Synchronize/PDM-WB-Synchronize.html>

Click [here](#) for a list of upcoming features and releases
http://www.cmi-support.com/documentation/PDM-Workbench_Release_Plan.pdf



The next release will focus on support of Teamcenter Engineering and Teamcenter Unified.

CMI 9.4 has been released

CMI 9.4, released in October of 2008.

New features include:

- User specific DMU file
- New display options in Synchronize
- Interoperation with VisMockup
- Performance improvement for large product structures in CATIA V5
- Support of LINUX server platform

Click [here](#) for a list of upcoming features and releases
http://www.cmi-support.com/documentation/CMI_Release_Plan.pdf

Visit us at PLM World in Nashville



Gaylord Opryland Resort & Convention Center in Nashville, TN

As always, T-Systems will present its PLM and CAD solutions at PLM World, this year in Nashville, Tennessee, June 1-4, 2009.

We look forward to welcoming you to our booth; live demos of our products will be available

- Latest enhancements to classic CMI
- The new PDM-Workbench 2.3 release for Teamcenter Unified
- CMI RII - Enterprise level CATIA integration for Teamcenter Unified
- CATIA supplier integration
- PDM-WebConnector
- COMFOX JT Services

Are you involved in PLM with CATIA and Teamcenter? Drop by our booth; it will be time well spent.

Best Regards,

Your T-Systems CMI Team

Contact

Europe & Rest Of World

T-Systems Enterprise Services GmbH
 Solution Center PLM
 Fasanenweg 5
 70771 Leinfelden-Echterdingen
 Germany

Phone : +49-711-972-40 304
 Fax : +49 1805 3344910453
 E-mail : cmi_support@t-systems.com

USA

T-Systems North America Inc.
 3499 West Hamlin Road
 Rochester Hills
 MI 48309
 USA

Phone : +1-248-276-3419
 Fax : +1-248-276-5815
 E-mail : Seth.Husain@t-systems.com

France

T-Systems France
 PLM Systems Integration
 22, Bd des Tchecoslovaques
 69007 Lyon
 France

Tel : +33 (0)4 37 65 22 54
 Fax : +33 (0)4 37 65 23 23
 E-mail : plm@t-systems.fr

Japan

T-Systems Japan K.K.
 Bancho House
 29-1, Ichibancho
 Chiyoda-ku
 Tokyo 102-0082
 Japan

Phone : +81 352138661
 Fax : +81 352138632
 E-mail : info@t-systems.jp