

Dear CAD / PLM Professional,



A. Visit us at the PLM World in California



Figure 1 – Long Beach Convention Center

As every year, T-Systems is presenting the latest CATIA V4/V5 Teamcenter Integration (CMI) release at the PLM World this year in Long Beach, California. We are looking forward to welcoming you at **booth #20**, where you can see live demos of the latest CMI release and the CMI PDM-Workbench 2.0 for Teamcenter Enterprise and Teamcenter Engineering.



B. CMI 8.9 has been released

CMI 8.9 comes with a bundle of new functionality such as:

Insert from Teamcenter

Adds single items or assembly structures from Teamcenter below the selected CATIA node (similar to the native CATIA “insert an existing component” functionality).

Reset Invalid Position

Resets the invalid Model positions to the initial state (identity matrix).

Expand for Visualization

This new functionality enables the loading of a single visualization file (CGR, CATPart) as a representation of a whole substructure of exact geometries.

Easy support of multiple CATIA Environments

The same Teamcenter client can be used with different CATIA project environments.

Use BOM – NO BOM geometries

Sometimes it is necessary to handle CATParts outside of the BOM (e.g. for reference or auxiliary geometries). Other CATParts need to be represented by a Component in Teamcenter. Now both cases are supported:

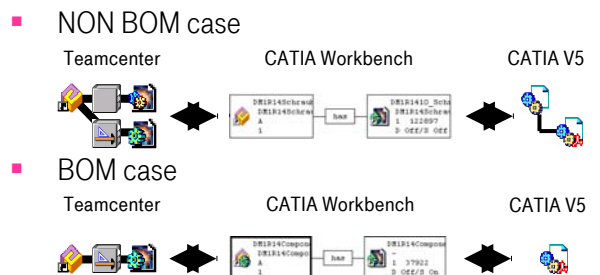


Figure 2 – BOM and NON BOM geometries



C. PDM-Workbench version 2.0 has been released

With the new PDM-Workbench 2.0 release the CAD designer may now register CATIA V5 CATProducts and CATParts in Teamcenter Enterprise from within the PDM-Workbench in CATIA V5. The so called Synchronize functionality allows the automatic creation of the CATIA objects and their relations in PDM.



Figure 3 - PDM-Workbench TC Engineering



D. Using a Geometry find engine with CMI

CATParts and CATProducts can be found easily and quickly via their shape (geometry) of a selected part by using the T-Systems CATIA-Plugin for geolus^{SHAPE}®, a product of Capgemini, which is tightly coupled with CMI. In a customer project with 200.000 parts in the database the user can find parts in less than a second.

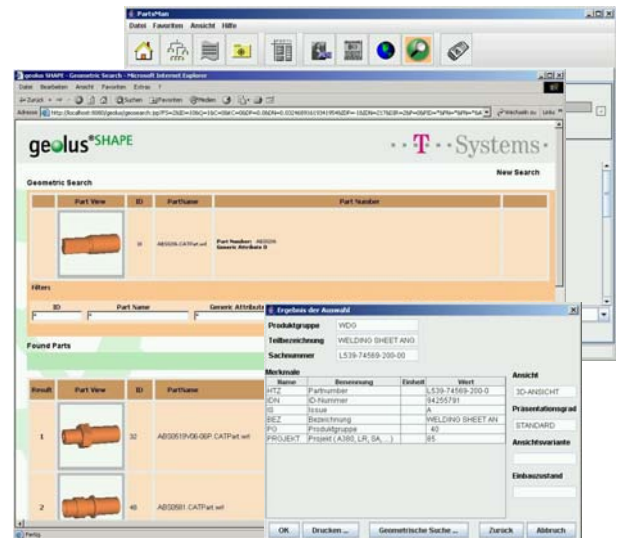


Figure 4 – geolus^{SHAPE}® together with NIS PartsMan



Best Regards,
Your T-Systems CMI Team

Contact

Europe & Rest Of World

T-Systems Enterprise Services GmbH
Delivery Center EPDM
Fasanenweg 5
70771 Leinfelden-Echterdingen
Germany

Phone : +49-711-972-49 657
Fax : +49-711-972-90 330
E-mail : cmi_support@systems.com

USA

T-Systems North America Inc.
691 North Squirrel Road., Suite 160
Auburn Hills
MI 48326
USA

Phone : +1-248-370-8777
Fax : +1-248-370-8771
E-mail : tsalva@t-systemsus.com

France

T-Systems France
PLM Systems Integration
22, Bd des Tchecoslovaques
69007 Lyon
France

Tel : +33 (0)4 37 65 22 54
Fax : +33 (0)4 37 65 23 23
E-mail : plm@t-systems.fr

Japan

T-Systems Japan K.K.
Bancho House
29-1, Ichibancho
Chiyoda-ku
Tokyo 102-0082
Japan

Phone : +81 352138661
Fax : +81 352138632
E-mail : info@t-systems.jp