

Dear CAD / PLM Professional,

As CATIA V5 emerges as the new standard for CAD as a basis for 3D PLM in industry, the integration of CATIA V5 to PLM will play a major role in future company success. This newsletter will show you how T-Systems today help their customers get this mission on its way to success.



Newsletter contents

A. CMI helps to establish CATIA V5

- Acceleration of the design process
- The standard for small and large customers

B. New CMI 8.8 is available

- Exposure of external references in Teamcenter Enterprise
- Viewer integration for JT (PLM XML) and CGR (3D XML)
- Update of CMI Workbench contents with changed CATIA V5 product structure
- Enhancements for CMI Synchronize
- Performance Improvements

C. CMI PDM-Workbench 1.2 release

- Functional overview
- CATIA V5 Integration to Teamcenter Engineering

D. Winner of the last CMI lottery



A. CMI helps to establish CATIA V5

CMI - Acceleration of the design process

Companies leverage T-Systems' Teamcenter Enterprise (TC Enterprise) - CATIA V5 integration (CMI) to accelerate their design processes and has proven itself even in large, globally distributed and collaborative projects. Today at some customer sites CMI CATIA V5 is used by more than 1,000 designers in parallel.

CMI - The standard for small and large customers

Functionality developed in large CATIA V5 integration projects is provided with CMI in a reliable and timely manner. With the growing number of installations CMI is the most powerful and successful integration solution for CATIA V5 available on the market. CMI is a scalable solution that provides the capabilities required for all sizes of customers, be they large or small.



B. New CMI 8.8 is available

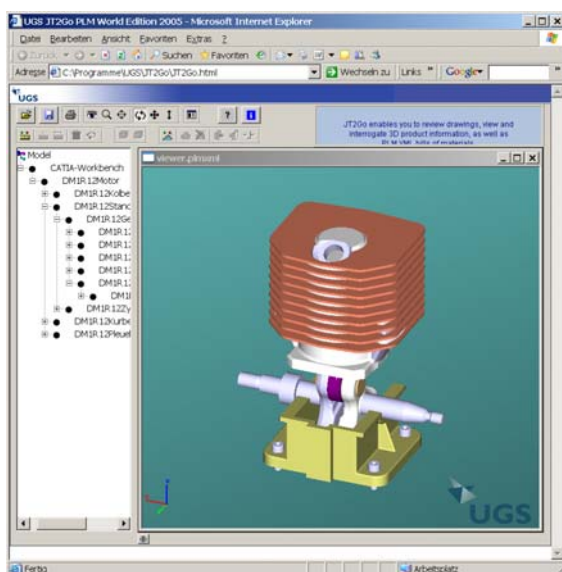
The new CMI 8.8 release has been available for download since October 2005. With the new version of CMI comes some valuable new functionality which greatly simplifies the use of CATIA V5 in the context of TC Enterprise.

Viewer integration for JT (PLM XML) and CGR (3D XML)

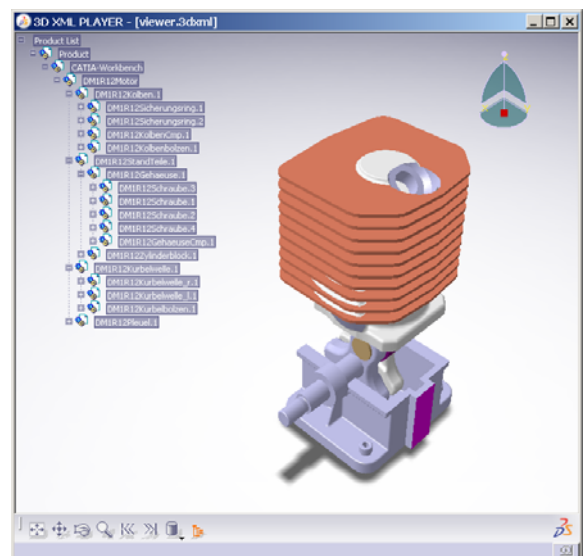
With the new CMI viewer functionality, the contents of the CMI Workbench can be sent to the desired viewer, enabling a quick preview directly out of TC Enterprise. The CATIA data visualized in the dedicated viewer corresponds to the selected PDM configuration. Of course, the viewing functionality can be used without requiring CATIA V5 licenses.

Today CMI supports:

- JT format – based on the PLM XML protocol. Can be used with UGS JT viewer JT2GO (<http://www.jt2go.com>)



- CGR format – based on the 3D XML protocol. Can be used with Dassault Systèmes' viewer 3D XML Player (<http://www.3ds.com/products-solutions/3d-for-all/3d-xml/>)



Performance Improvements

An advanced CMI caching mechanism helps to significantly accelerate all CMI Load transactions. The mechanism allows the reuse of CATIA documents already transferred to the local working directory.

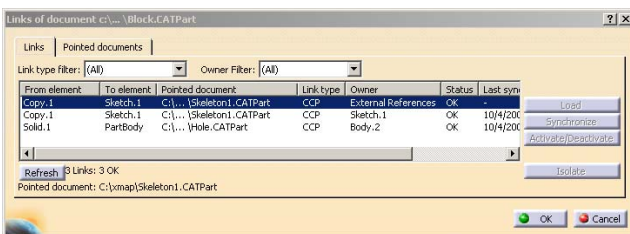
Update of CMI Workbench contents with changed CATIA V5 product structure

This new functional enhancement visualizes any changes to the CATIA V5 product structure in the CMI Workbench (with Create/Save As and Synchronize). New items appear in the CMI workbench and the modification in the CATIA V5 product structure is reflected so that the contents of the CMI Workbench exactly correspond to the CATIA V5 session.

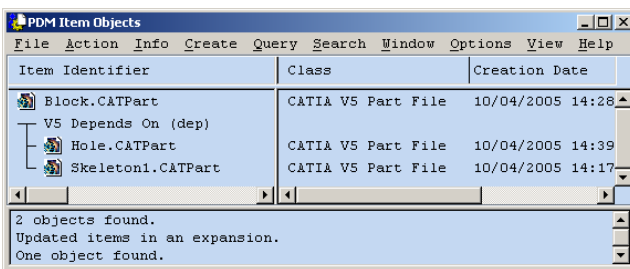


Exposure of external references in TC Enterprise

CMI now externalizes references between CATIA V5 documents in TC Enterprise with its data synchronization commands. In CATIA V5 the functionality “Get referenced documents” automatically loads the referenced documents from TC Enterprise into the current CATIA V5 session.



In TC Enterprise, links between CATParts (CCP Links) can be managed. Each link of a CATPart to another CATPart is represented by a “depends on” relation in TC Enterprise.



Enhancements for CMI Synchronize

- Graphical refresh of the Synchronize dialog provides a constant access to all information
- An info button provides more detailed information about the particular Synchronize actions.



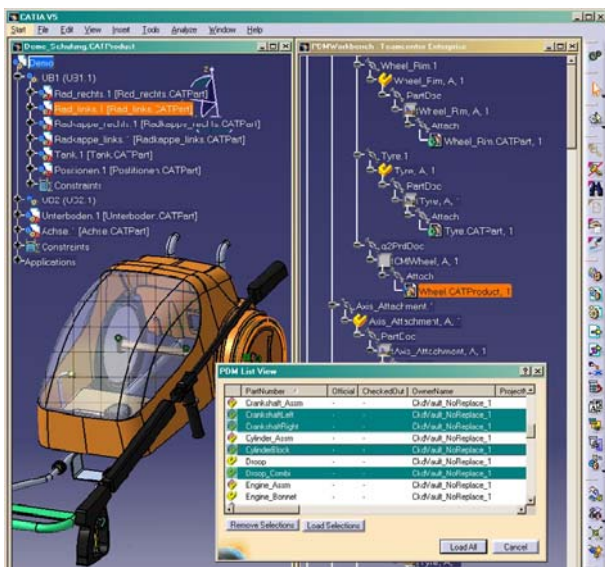
C. PDM-Workbench

PDM-Workbench version 1.2 has been released

As a new member of the CMI solution family the PDM-Workbench provides access to PDM functionality and processes from within CATIA V5. Leveraging the CATIA V5 look and feel, designers get intuitive access to the world of PLM.

First presentations at different conventions (PLM World 2005 in Dallas, European CATIA Forum in Frankfurt 2005) resulted in very positive feedback.

The PDM-Workbench version 1.2 has been available since October 2005. This new version of the PDM-Workbench provides full access to PDM functionality and does not require any other PDM client installation. Several evaluation projects based on this version are under way.



Functionality available with PDM-Workbench 1.2

Base functionality

- PDM session management
- Configurable PDM content
- PDM list view for query results

Accessible PDM functionality

- Query for PDM data
- Update to PDM
- Create PDM objects
- Check In / Check Out
- Expand of PDM content
- Copy / Paste mechanism for PDM objects to generate a PDM structure

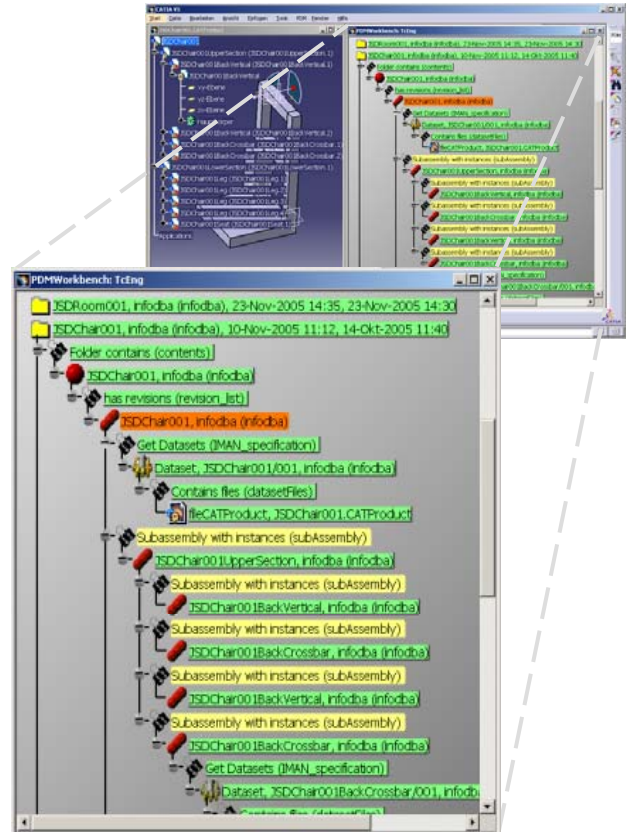
CAD-PDM consistency

- Load Structure to CATIA according to expanded PDM content
- Simultaneous mutual synchronization of PDM content with CATIA content and vice versa

CATIA V5 - Teamcenter Engineering Integration

Until today Teamcenter Engineering (TC Engineering) customers suffered from the lack of a proper working CATIA V5 integration. Considering the frequent requests for such integration, T-Systems decided to also provide the CMI PDM-Workbench for TC Engineering.

TC Engineering customers may now rely on and benefit from the concepts and solutions of the industry proven CMI product. The PDM-Workbench approach will allow the TC Engineering community to share in the concepts and solutions already available to the TC Enterprise community.



E. Winner of the CMI lottery

The winner of the last CMI lottery can be found at <http://www.cmi-support.com>. Congratulations on your new Xbox!



Best Regards,
Your T-Systems CMI Team

Contact

Europe & Rest Of World

T-Systems Enterprise Services GmbH
Delivery Center EPDM
Fasanenweg 5
70771 Leinfelden-Echterdingen
Germany

Phone: +49-711-972-49 657
Fax: +49-711-972-90 330
E-mail: cmi_support@t-systems.com

USA

T-Systems North America Inc.
691 North Squirrel Road., Suite 160
Auburn Hills
MI 48326
USA

Phone: +1-248-370-8777
Fax: +1-248-370-8771
E-mail: tsalva@t-systemsus.com

France

T-Systems France
PLM Systems Integration
22, Bd des Tchecoslovaques
69007 Lyon
France

Tel: +33 (0)4 37 65 22 54
Fax: +33 (0)4 37 65 23 23
E-mail: plm@t-systems.fr

Japan

T-Systems Japan K.K.
Bancho House
29-1, Ichibancho
Chiyoda-ku
Tokyo 102-0082
Japan

Phone: +81 352138661
Fax: +81 352138632
E-mail: info@t-systems.jp

For more information, please visit our CMI website www.cmi-support.com.