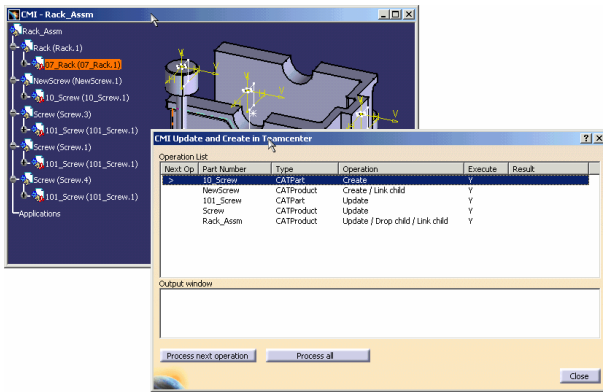


New CMI 8.4 is now released.

The new CATIA Teamcenter Interface (CMI) Release 8.4 from T-Systems is focused on ease of use and performance, in addition to having new and improved functionality. Our customers can now use the new and intuitive CMI functionality “Synchronize” to modify existing structures and build new product structures directly in CATIA V5. A “wizard” is also available to seamlessly guide the designer through the Teamcenter (TC) registration process.



Another highlight of CMI 8.4 is “Black Box” functionality, which enables users to archive whole native CATIA V5 sub-product structures in relation to a single TC part. This customer driven feature is useful to integrate non-BOM relevant CATIA V5 data into the customer’s PDM system.

For customers with a distributed PDM environment the new CMI Splitted Server (CCS) provides access to CATIA data with improved performance and through firewalls (CCS uses only mux communication).

CMI “reloaded” – the new CMI CATIA V5 component data model.

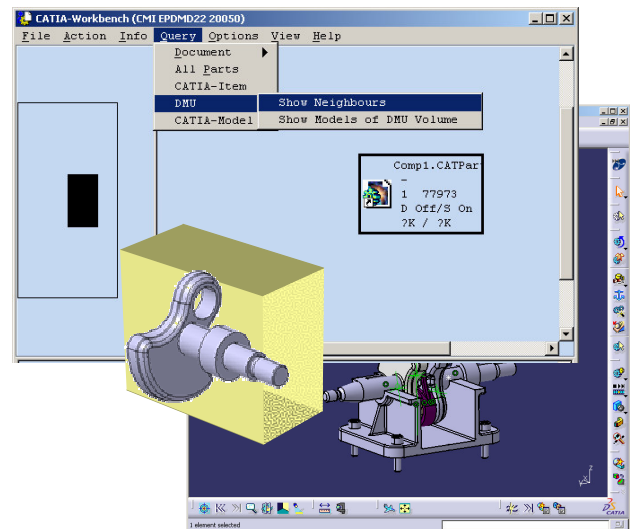
T-Systems offers the new CMI component data model as an alternative, perfectly tailored for customers that:

- Have a CATIA V5 centric PDM processes
- Build up product structures in CATIA V5
- Want to have their native CATIA V5 product structures 1 to 1 in TC.

By using the CMI component data model, the CATIA users can easily transform the CATIA V5 product structure to the Teamcenter BOM with a direct mapping of CATParts to TC Components and CATProducts to TC Assemblies.

Extended DMU capabilities in CMI.

With the CMI DMU module, a physical pre-selection within large product structures (e.g. a complete aircraft or vehicle) can be performed directly in the TC database. The amount of CATIA data to be handled is thereby greatly reduced, the focus narrowed to the space envelope and the data transfer time minimized.



Contacts.

Europe T-Systems International GmbH Business Center EPDM Fasanenweg 5 70771 Leinfelden-Echterdingen, Germany
Phone : +49-711-972-49 657 Fax : +49-711-972-90 330 E-mail : cmi_support@t-systems.com

USA T-Systems Inc. 691 North Squirrel Road., Suite 160 Auburn Hills, MI 48326, USA
Phone : +1-248-370-8777 Fax : +1-248-370-8771 E-mail : tsalva@t-systemsus.com

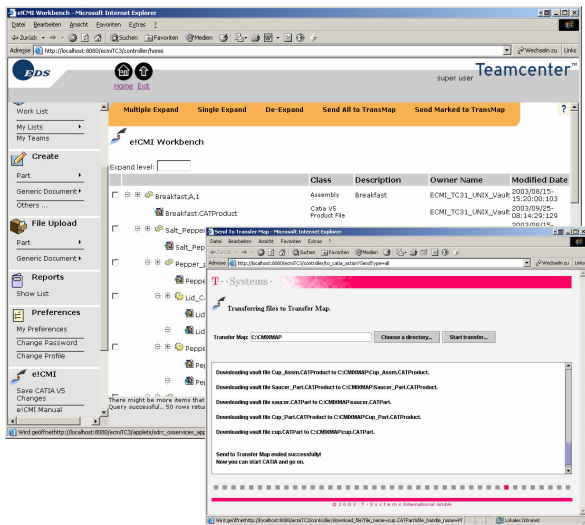
Internet www.cmi-support.com | www.pdm-broker.com

T-Systems International GmbH

The DMU functionality is part of the CMI workbench and provides comprehensive support of existing customer DMU processes. For details please contact cmi_support@t-systems.com.

T-Systems' web based CATIA Teamcenter integrations.

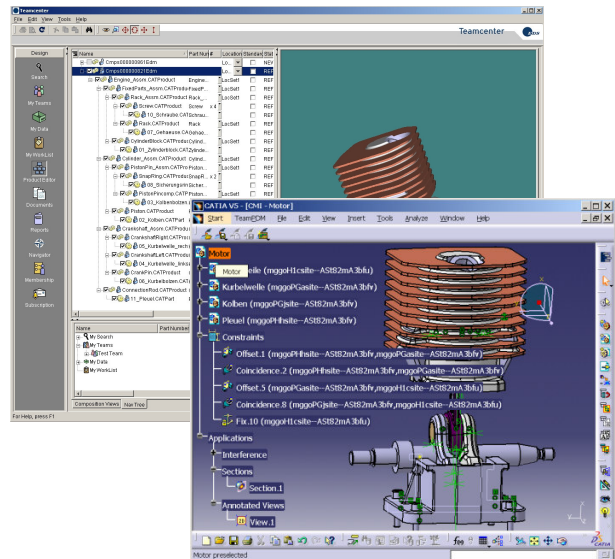
Along with the TC PLM web clients, T-Systems extended CMI to this new web based technology.



With e!CMI the CATIA V5 user can manage its CAD data by accessing the collaborative PLM system Teamcenter via **Thin Client** technology by using a standard web browser. In its second version, e!CMI now comes with a great boost of performance. Beside the adoption to the new Thin Client version 3.1, e!CMI now supports the new component data model (see above) and allows users to work on different projects in parallel.

The TC **Rich Client** is the new alternative multi-CAD client for designers. With version 1.1 of its Rich Client CATIA V5 connector - also a part of the CMI product family - T-Systems transfers the complete Rich Client 3.1 CAD functionality in a document centric way to a CATIA V5 workplace with the following technical highlights:

- Import of CATIA V5 product structures
- Modification of existing CATIA V5 product structures and synchronizing in Rich Client
- CAD neutral visualization of CAD data in the Rich Client



Each TC technology (Classic Client, Thin Client and Rich Client) provides a different level of CAD integration and PLM support. With its ten years of CAD integration experience, T-Systems can help customers select the appropriate solution for specific environments and requirements.

For more information, please visit our CMI website.

Contacts.

- Europe** T-Systems International GmbH Business Center EPDM Fasanenweg 5 70771 Leinfelden-Echterdingen, Germany
Phone : +49-711-972-49 657 Fax : +49-711-972-90 330 E-mail : cmi_support@t-systems.com
- USA** T-Systems Inc. 691 North Squirrel Road., Suite 160 Auburn Hills, MI 48326, USA
Phone : +1-248-370-8777 Fax : +1-248-370-8771 E-mail : tsalva@t-systemsus.com
- Internet** www.cmi-support.com | www.pdm-broker.com