
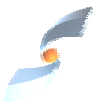


CMI User Day, New Orleans, April 3rd, 2003

 T-Systems invites all users and interested people to share their CMI experiences. During CMI User Day the standard CMI, the Web based e!CMI and also the supplier version s!CMI will be presented to a wide audience.


CMI @ COE and PLM World.

 You are welcome to visit the following international fairs where live demonstrations of CMI will be taking place:

- COE Spring 2003 Conference, March 30 – April 2nd, 2003 in New Orleans, Louisiana
<http://www.coe.org/>
- CMI User Day April 3rd, 2003 in New Orleans, Louisiana
<http://www.cmi-support.com/>
- PLM World's 2003 Annual Conference, April 28 - May 2nd 2003 in Anaheim, California
<http://event.plmworld.org/>




CMI 8.3 now released.

 T-System recently released CMI Release 8.3 (CATIA Metaphase Interface). CMI 8.3 significantly enhances the existing CATIA V5 integration via a document-centric management of CATProducts in TeamCenter Enterprise and Metaphase. Advanced CATIA V5 functionality such as CATProduct, CATDrawing and CATPartLinks may now be used.

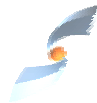
Furthermore, CMI 8.3 uses the new CATIA V4 module that supports CATParts and the determination of bounding boxes.

Finally, two new modules s!CMI and e!CMI extend the CMI product family and are now available. s!CMI and e!CMI are discussed in detail below.

CMI CATIA V5 Import Tool.

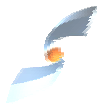
 The introduction of a PDM system such as TeamCenter Enterprise necessitates migration existing CATIA V5 data. Migration of your file-based CATIA V5 data to TeamCenter Enterprise is now possible in an easy and interactive way using the CMI Import Tool – a CATIA V5 addin. The CMI Import Tool can also be used to incorporate CATIA V5 data provided by your supplier, for example.

s!CMI integrates your suppliers.

 s!CMI, the lean supplier integration is now also available for CATIA V5. New complex CATIA V4 or V5 product structures can be exchanged between supplier and OEM. s!CMI is intended to integrate suppliers that work with native CATIA V5/V4. s!CMI does not require direct access to a TeamCenter/ Metaphase PDM system - only plain file data is exchanged.

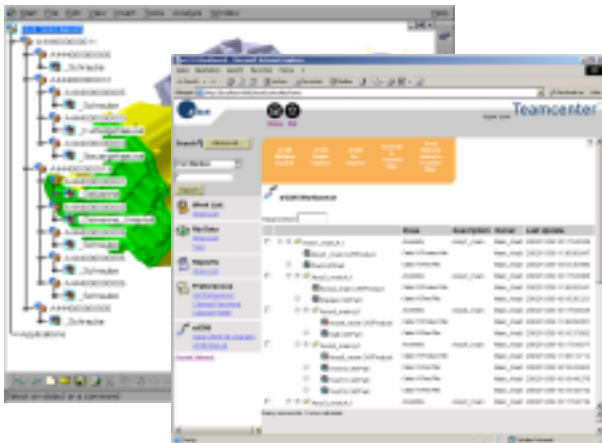
The new s!CMI release will be available together with the new CMI 8.3 release by the end of January.

CMI goes Web: e!CMI 1.0 released.

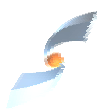


The CMI Product family has been extended by a new module called e!CMI. e!CMI permits your suppliers to work in a collaborative environment using a standard Web browser such as Internet Explorer or Netscape - thereby allowing your suppliers to access data available in your PDM system without the need to have a PDM system running themselves.

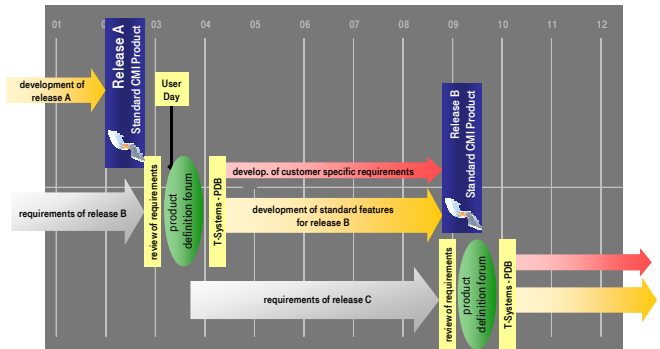
e!CMI is based on TeamCenter Enterprise 2.0 thin client technology and provides a seamless integration of CATIA V5. CATIA V5 product structures and models can be queried, browsed, downloaded, changed in CATIA V5 and finally saved back to your PDM system.



Your requirements covered by CMI.



CMI is continuously enhanced and developed in order to satisfy new customer requirements and newly emerging technologies. Enhancements considered to be the most valuable will be integrated in the release plan of CMI. In



order to make this procedure more transparent and efficient we defined a new release process. In this new release process our customers can directly participate in the definition of the feature set for the upcoming CMI release.

The new release process is depicted in the figure above and is defined as follows: Firstly we collect requirements from various sources (CMI User Day, CMI Forum, CMI Homepage, individual customer contacts, CMI development). Next, the T-Systems product definition board (PDB) reviews the requirements and identifies those that will be incorporated in the standard CMI release. Of course, beside the enhancements of the standard CMI product, special customer requirements can also be incorporated. T-Systems delivers about two CMI releases per year. As a consequence T-Systems has to prioritize the requirements and identify those that can be implemented within the planned release schedule.

Seize your chance to influence the development of CMI. We invite you to join the User Day on Thursday, 3rd of April in New Orleans to see the latest CMI release and to discuss your requirements for the next CMI release.

For more information, please visit our CMI website.

Contacts.

Europe	T-Systems International GmbH Business Center EPDM Fasanenweg 5 70771 Leinfelden, Germany Phone : +49-711-972-49 657 Fax : +49-711-972-90 330 E-mail : cmi_support@t-systems.com
USA	T-Systems Inc. 691 North Squirrel Road., Suite 160 Auburn Hills, MI 48326, USA Phone : +1-248-370-8777 Fax : +1-248-370-8771 E-mail : tsalva@t-systemsus.com
Internet	www.cmi-support.com www.pdm-broker.com