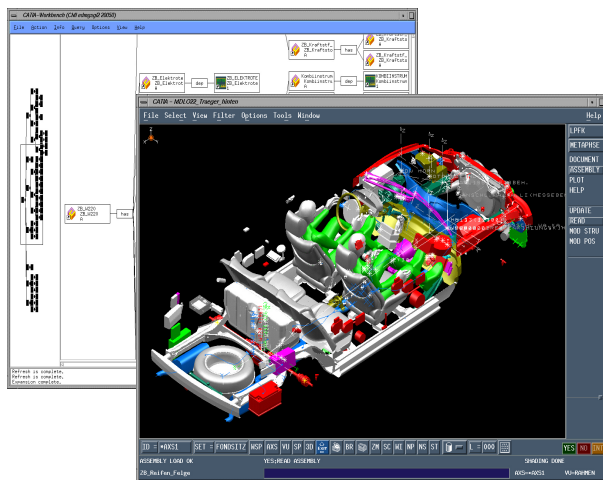


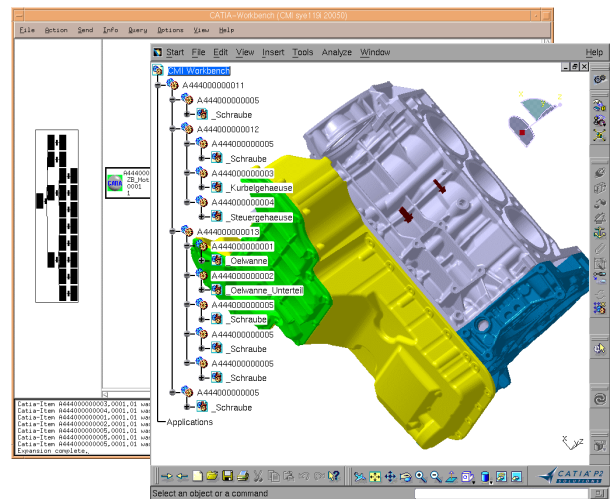
CMI Newsletter

T-Systems' CATIA Metaphase Interface (CMI) is now also available for CATIA V5 Integration. With this CATIA V5 integration, T-Systems maintains its philosophy of "combining the CAD superiority of CATIA with the powerful PDM functionality of Metaphase". CMI provides an integration between the Metaphase/TeamCenter Collaboration Foundation PDM system and CATIA V5. By offering the CATIA V4 and V5 integration as a unified whole, CMI enables a smooth transition from CATIA V4 to V5. With CMI you can use all standard CATIA V5 tools and get the PDM benefits of Metaphase.



You are welcome to visit live demonstrations of CMI at the following international fairs:

- [COE Spring 2002 Conference](#), April 14 - 17, 2002 in Palm Springs, California
- [CMI User Day](#) on Thursday, April 18, 2002 in Palm Springs, California
- [PLM World's 2002 Annual Conference](#), April 29 - May 03 2002 in Florida



For more information and the agenda of the CMI User Day, please visit our web pages:

www.cmi-support.com

www.pdm-broker.com

Contact:

<p>In Germany:</p> <p>T-Systems ITS GmbH Business Unit EPDM Erich-Herion Str.13, D-70736 Fellbach ☎ +49 (0711) 17- 49657 ✉ +49 (0711) 17- 40330</p>	<p>In the U.S.A:</p> <p>T-Systems US ITS GmbH IT Service NA 691 N. Squirrel Rd., Suite 160 Auburn Hills, MI 48326 ☎ +1-248-370-8729 ✉ +1-248-370-8771</p>
---	--